

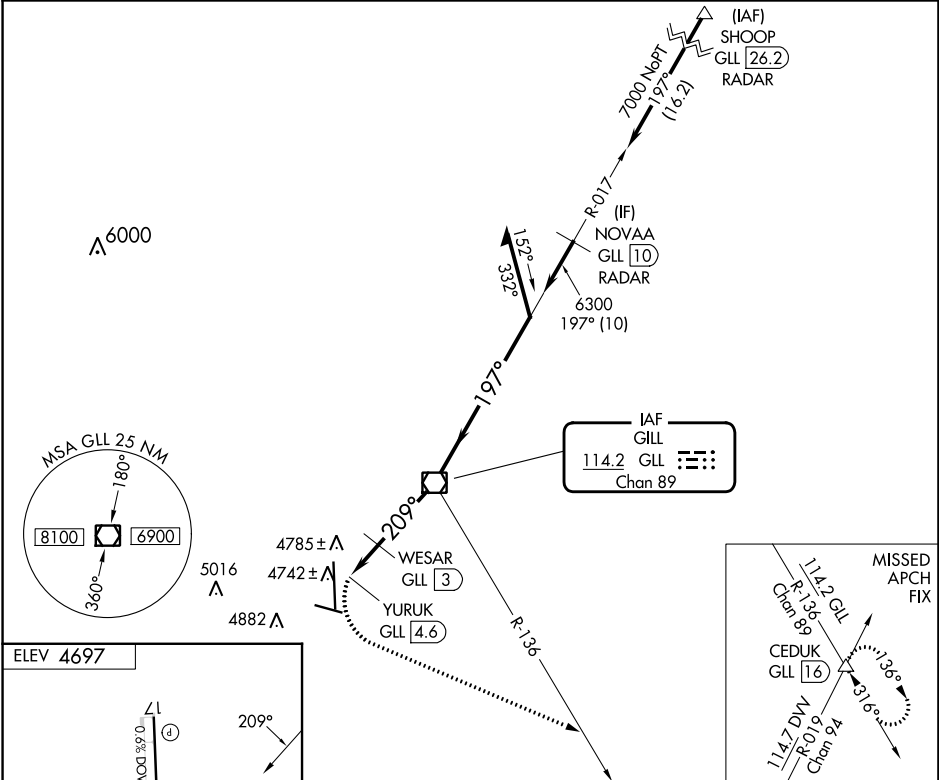
| | | | |
|---|------------------------|--|---|
| VOR/DME GLL 114.2 Chan 89 | APP CRS 209° | Rwy Idg TDZE Apt Elev 4697 | N/A N/A 4697 |
|---|------------------------|--|---|

VOR-A
GREELEY-WELD COUNTY (GXY)

⚠ When local altimeter setting not received, use Northern Colorado Rgnl altimeter setting and increase all MDA 100 feet and visibility Cat C/D and WESAR fix minimums Cat C/D visibility ¼ SM. DME required.

MISSED APPROACH: Climbing left turn to 7000 on heading 100° and GLL VOR/DME R-136 to CEDUK INT/GLL 16 DME and hold.

| | | | |
|----------------------------|---|---------------------------|-------------------------------|
| AWOS-3PT 135,175 | DENVER APP CON 134.85 251.125 | CLNC DEL 126.65 | UNICOM 122.7 (CTAF) |
|----------------------------|---|---------------------------|-------------------------------|



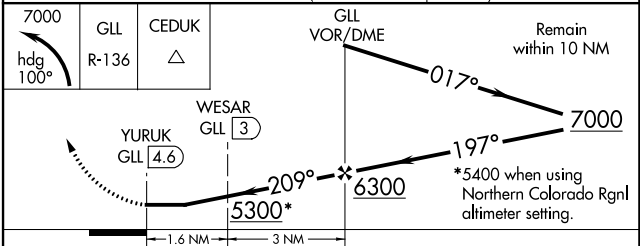
ELEV 4697

Profile view diagram showing vertical clearance and descent/ascent rates. It includes a 209° heading, a 10000 X 100 descent rate, and a 5801 X 100 climb rate. Other parameters include 0.6% DOWN, 0.4% UP, and 0.3% UP.

REIL Rwys 10, 28, 17 and 35
MIRL Rwys 10-28 and 17-35

FAF to MAP 4.6 NM

| | | | | | |
|---------|------|------|------|------|------|
| Knots | 60 | 90 | 120 | 150 | 180 |
| Min:Sec | 4:36 | 3:04 | 2:18 | 1:50 | 1:32 |



| CATEGORY | A | B | C | D |
|-----------------------------------|-----------------------|-----------------------|-------------------------|-------------------------|
| C CIRCLING | 5300-1 | 603 (700-1) | 5300-1¾ 603 (700-1¾) | 5380-2¼ 683 (700-2¼) |
| WESAR FIX MINIMUMS (DME REQUIRED) | | | | |
| C CIRCLING | 5120-1 423 (500-1) | 5200-1 503 (600-1) | 5200-1½ 503 (600-1½) | 5380-2¼ 683 (700-2¼) |

SW-1, 26 DEC 2024 to 23 JAN 2025

SW-1, 26 DEC 2024 to 23 JAN 2025