

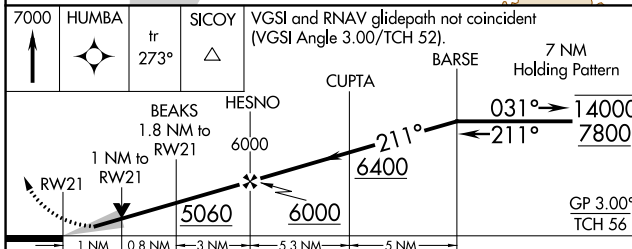
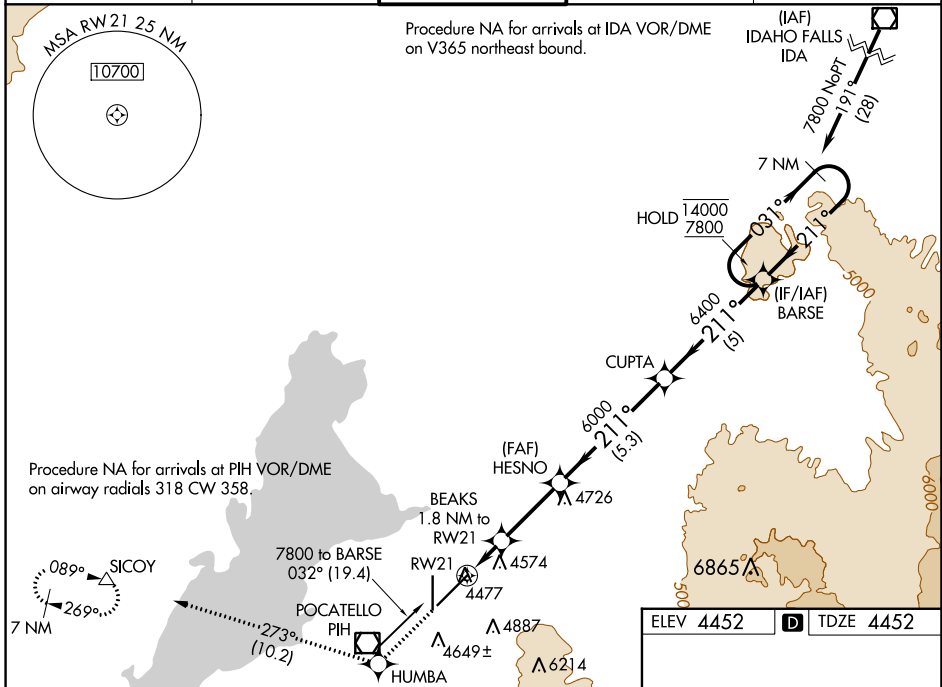
WAAS CH <b>78212</b> W21A	APP CRS <b>211°</b>	Rwy Idg TDZE Apt Elev	<b>9059</b> <b>4452</b> <b>4452</b>
---------------------------------	------------------------	-----------------------------	---

# RNAV (GPS) RWY 21

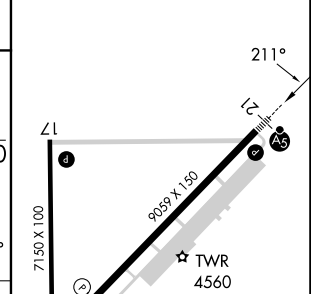
POCATELLO RGNL (PIH)

RNP APCH - GPS.	MALSR 	MISSED APPROACH: Climb to 7000 direct HUMBA and track 273° to SICOY and hold.
<p><b>⚠</b> Circling NA southeast of Rwy 3-21. For uncompensated Baro-VNAV systems, LNAV/VNAV NA below -22°C or above 54°C. For inop ALS, increase LNAV Cat C/D visibility to RVR 5500. *RVR 1800 authorized with use of FD or AP or HUD to DA.</p>		

ATIS <b>135.625</b>	SALT LAKE CENTER <b>128.35 239.25</b>	<b>POCATELLO TOWER*</b> <b>119.1</b> (CTAF) <b>257.8</b>	GND CON <b>121.9</b>	UNICOM <b>122.95</b>
------------------------	--	---	-------------------------	-------------------------



ELEV 4452	TDZE 4452
-----------	-----------



CATEGORY	A	B	C	D
LPV DA*		4652/24	200 (200-1/2)	
LNAV/VNAV DA		4835/35	383 (400-5/8)	
LNAV MDA	4820/24	368 (400-1/2)	4820/35	368 (400-5/8)
CIRCLING	4860-1 408 (500-1)	4920-1 468 (500-1)	4920-1 1/2 468 (500-1 1/2)	5020-2 568 (600-2)

HIRL Rwy 3-21	①
MIRL Rwy 17-35	①
REIL Rwy 3 and 17	①

NW-1, 26 DEC 2024 to 23 JAN 2025

NW-1, 26 DEC 2024 to 23 JAN 2025