

VOR/DME PIH 112.6 Chan 73	APP CRS 033°	Rwy Idg 9059 TDZE 4444 Apt Elev 4452
--	------------------------	---

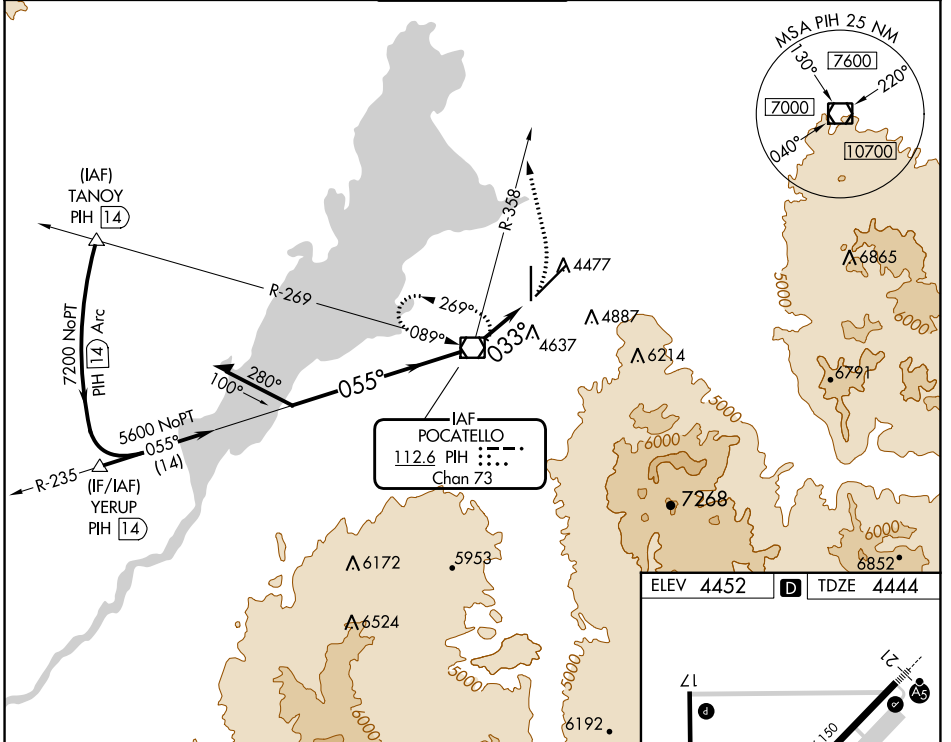
VOR RWY 3

POCATELLO RGNL (PIH)

⚠ Circling to Rwy 35 NA at night. When VGSI inop, Straight-In/Circling Rwy 3 procedure NA at night. Circling NA southeast of Rwy 3-21. Visibility reduction by helicopters NA. When local altimeter setting not received, use Idaho Falls altimeter setting and increase all MDA 140 feet, and increase visibility S-3 Cat C ½ mile and Circling Cat C ¼ mile.

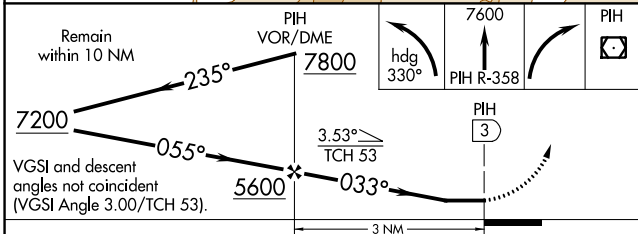
MISSED APPROACH: Climbing left turn on heading 330° and PIH VOR/DME R-358 to 7600 then right turn direct PIH VOR/DME and hold.

ATIS 135.625	SALT LAKE CENTER 128.35 239.25	POCATELLO TOWER* 119.1 (CTAF) 0 257.8	GND CON 121.9	UNICOM 122.95
------------------------	--	---	-------------------------	-------------------------



NW-1, 26 DEC 2024 to 23 JAN 2025

NW-1, 26 DEC 2024 to 23 JAN 2025



ELEV 4452	D	TDZE 4444
-----------	----------	-----------

HIRL Rwy 3-21 **1**
MIRL Rwy 17-35 **1**
REIL Rws 3 and 17 **1**

FAF to MAP 3 NM

Knots	60	90	120	150	180
Min:Sec	3:00	2:00	1:30	1:12	1:00

CATEGORY	A	B	C	D
S-3	4940-1	496 (500-1)	4940-1½ 496 (500-1¾)	NA
CIRCLING	5000-1 548 (600-1)	5020-1 568 (600-1)	5060-1¾ 608 (700-1¾)	NA