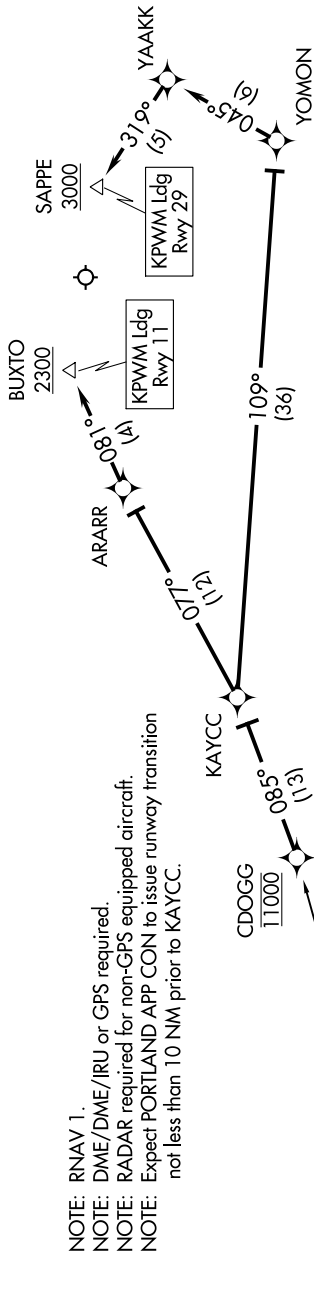


# CDOGG FOUR ARRIVAL (RNAV)

NE-1, 26 DEC 2024 to 23 JAN 2025

PORTLAND APP CON \*  
119.75 269.35  
ATIS  
119.05

- NOTE: RNAV 1.
- NOTE: DME/DME/IRU or GPS required.
- NOTE: RADAR required for non-GPS equipped aircraft.
- NOTE: Expect PORTLAND APP CON to issue runway transition not less than 10 NM prior to KAYCC.



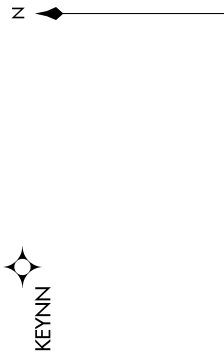
## ARRIVAL ROUTE DESCRIPTION

### CAMBRIDGE TRANSITION (CAM.CDOGG4)

From CDOGG on track 085° to KAYCC.

LANDING RUNWAY 11: From KAYCC on track 077° to ARARR, then on track 081° to cross BUXTO at or above 2300. Expect ILS or LOC RWY 11.

LANDING RUNWAY 29: From KAYCC on track 109° to YOMON, then on track 045° to YAAKK, then on track 319° to cross SAPPE at or above 3000. Expect ILS or LOC RWY 29.



NOTE: Chart not to scale.

# CDOGG FOUR ARRIVAL (RNAV)

(CDOGG.CDOGG4) 17JUN21

NE-1, 26 DEC 2024 to 23 JAN 2025