

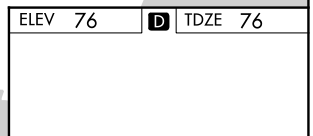
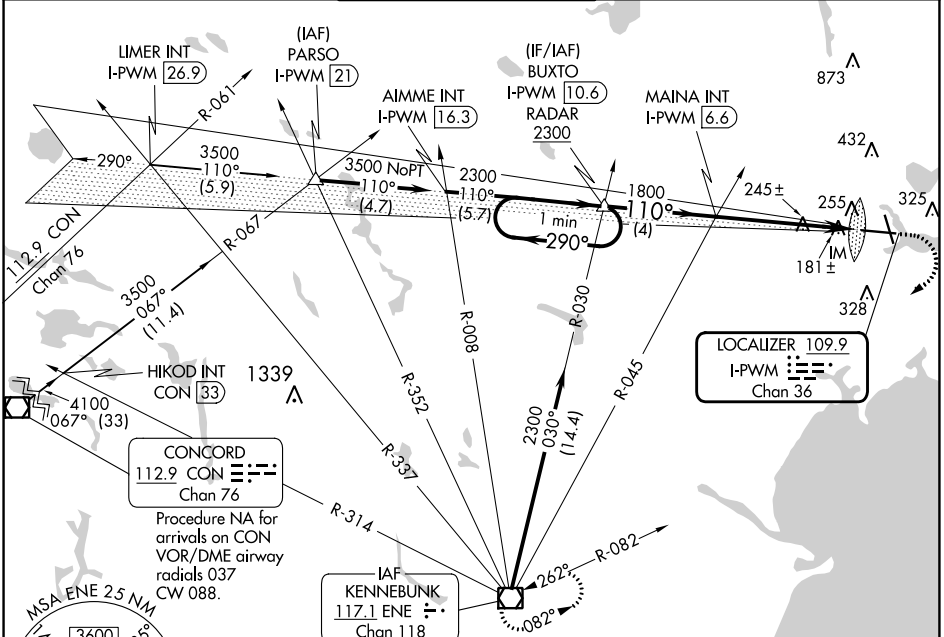
LOC/DME I-PWM <b>109.9</b> Chan <b>36</b>	APP CRS <b>110°</b>	Rwy Idg <b>7200</b> TDZE <b>76</b> Apt Elev <b>76</b>
---	------------------------	---

# ILS RWY 11 (SA CAT I)

PORTLAND INTL JETPORT (PWM)

Procedure NA when control tower closed. Requires specific OPSPEC, MSPEC, or LOA approval and use of HUD to DH.	ALSIF-2	MISSED APPROACH: Climb to 600 then climbing right turn to 3000 direct ENE VOR/DME and hold.

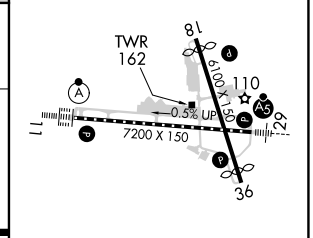
ATIS <b>119.05</b>	PORTLAND APP CON * <b>119.75 269.35</b>	PORTLAND TOWER * <b>120.9</b> (CTAF) <b>257.8</b>	GND CON <b>121.9</b>	CLNC DEL <b>121.9</b>	UNICOM <b>122.95</b>
-----------------------	--	--	-------------------------	--------------------------	-------------------------



One Minute Holding Pattern	BUXTO I-PWM 10.6	MAINA INT I-PWM 6.6
2300 ← 290° / 110° →	1800 ← 110° →	IM
GS 3.00° TCH 51	4 NM	5.3 NM

CATEGORY	A	B	C	D
S-ILS 11	RA 166/14		150 DA 226	

**SA CATEGORY I ILS - SPECIAL AIRCREW & AIRCRAFT CERTIFICATION REQUIRED**



TDZ/CL Rwy 11	
MIRL Rwy 18-36	
HIRL Rwy 11-29	
REIL Rwy 18 and 36	

NE-1, 26 DEC 2024 to 23 JAN 2025

NE-1, 26 DEC 2024 to 23 JAN 2025