

LOC/DME I-PWM 109.9 Chan 36	APP CRS 110°	Rwy Idg 7200 TDZE 76 Apt Elev 76
---	------------------------	---

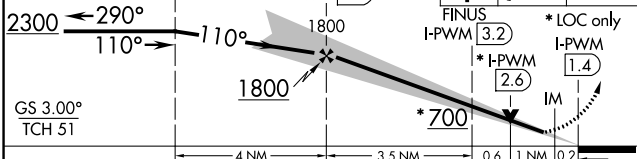
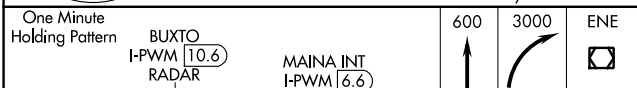
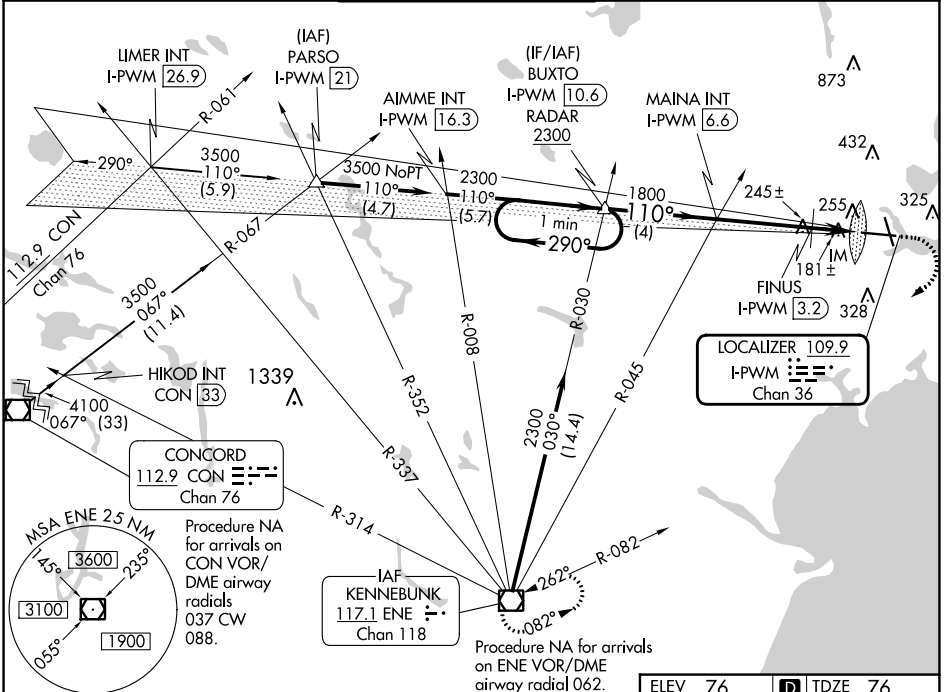
ILS or LOC RWY 11

PORTLAND INTL JETPORT (PWM)

ALSF-2 For inoperative ALSF-2, increase S-LOC 11 Cat C/D visibility to 1 1/2 mile. Increase FINUS fix minimums S-LOC 11 Cat C/D visibility to RVR 5500.

ALSF-2 MISSED APPROACH: Climb to 600 then climbing right turn to 3000 direct ENE VOR/DME and hold.

ATIS 119.05	PORTLAND APP CON * 119.75 269.35	PORTLAND TOWER * 120.9 (CTAF) 257.8	GND CON 121.9	CLNC DEL 121.9	UNICOM 122.95
-----------------------	--	--	-------------------------	--------------------------	-------------------------



ELEV 76	TDZE 76
TDZ/CL Rwy 11 MIRL Rwy 18-36 HIRL Rwy 11-29 REIL Rws 18 and 36	
FAF to MAP 5.3 NM	
Knots	60 90 120 150 180
Min:Sec	5:18 3:32 2:39 2:07 1:46

CATEGORY	A	B	C	D
S-ILS 11	276/18 200 (200-1/2)			
S-LOC 11	700/24	624 (700-1/2)	700-1 3/8	624 (700-1 3/8)
CIRCLING	700-1	624 (700-1)	740-1 3/4	860-2 1/2
FINUS FIX MINIMUMS				
S-LOC 11	440/24	364 (400-1/2)	440/35	364 (400-5/8)
CIRCLING	620-1	640-1	740-1 3/4	860-2 1/2
	544 (600-1)	564 (600-1)	664 (700-1/4)	784 (800-2/2)

NE-1, 26 DEC 2024 to 23 JAN 2025

NE-1, 26 DEC 2024 to 23 JAN 2025