

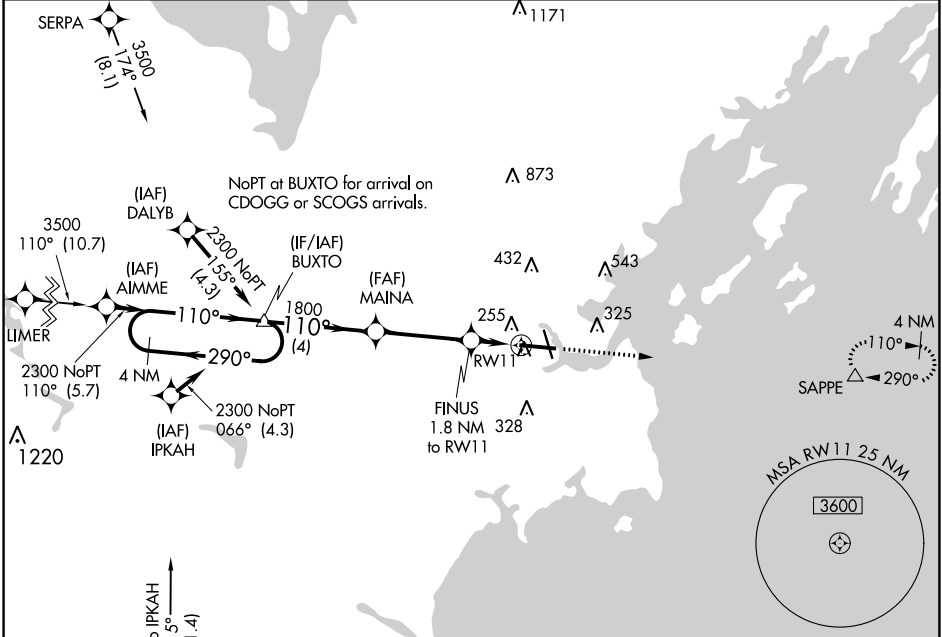
WAAS CH 70306 W11A	APP CRS 110°	Rwy ldg TDZE Apt Elev	7200 76 76
--	------------------------	-----------------------------	---------------------------------------

RNAV (GPS) RWY 11

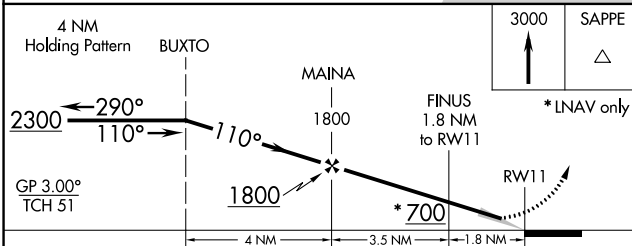
PORTLAND INTL JETPORT (PWM)

RNP APCH - GPS.		ALSF-2	MISSED APPROACH: Climb to 3000 direct SAPPE and hold, continue climb-in-hold to 3000.
<p>▼ For uncompensated Baro-VNAV systems, LNAV/VNAV NA below -18°C or above 54°C.</p>			

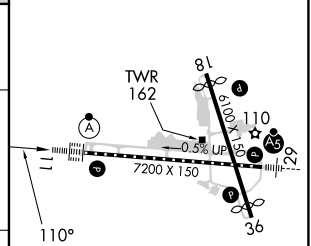
ATIS 119.05	PORTLAND APP CON ★ 119.75 269.35	PORTLAND TOWER ★ 120.9 0 (CTAF) 257.8	GND CON 121.9	CLNC DEL 121.9	UNICOM 122.95
-----------------------	--	---	-------------------------	--------------------------	-------------------------



Procedure NA for arrivals at ENE VOR/DME on airway radials 300 CW 062.



ELEV 76	D TDZE 76
---------	------------------



CATEGORY	A	B	C	D
LPV DA	276/18 200 (200-½)			
LNAV/VNAV DA	456/40 380 (400-¾)			
LNAV MDA	520/24 444 (500-½)	520/45 444 (500-¾)		
C CIRCLING	620-1 544 (600-1)	640-1 564 (600-1)	740-1¾ 664 (700-1¾)	860-2½ 784 (800-2½)

TDZ/CL Rwy 11 **0**
 MIRL Rwy 18-36 **0**
 HIRL Rwy 11-29 **0**
 REIL Rwys 18 and 36 **0**

NE-1, 26 DEC 2024 to 23 JAN 2025

NE-1, 26 DEC 2024 to 23 JAN 2025