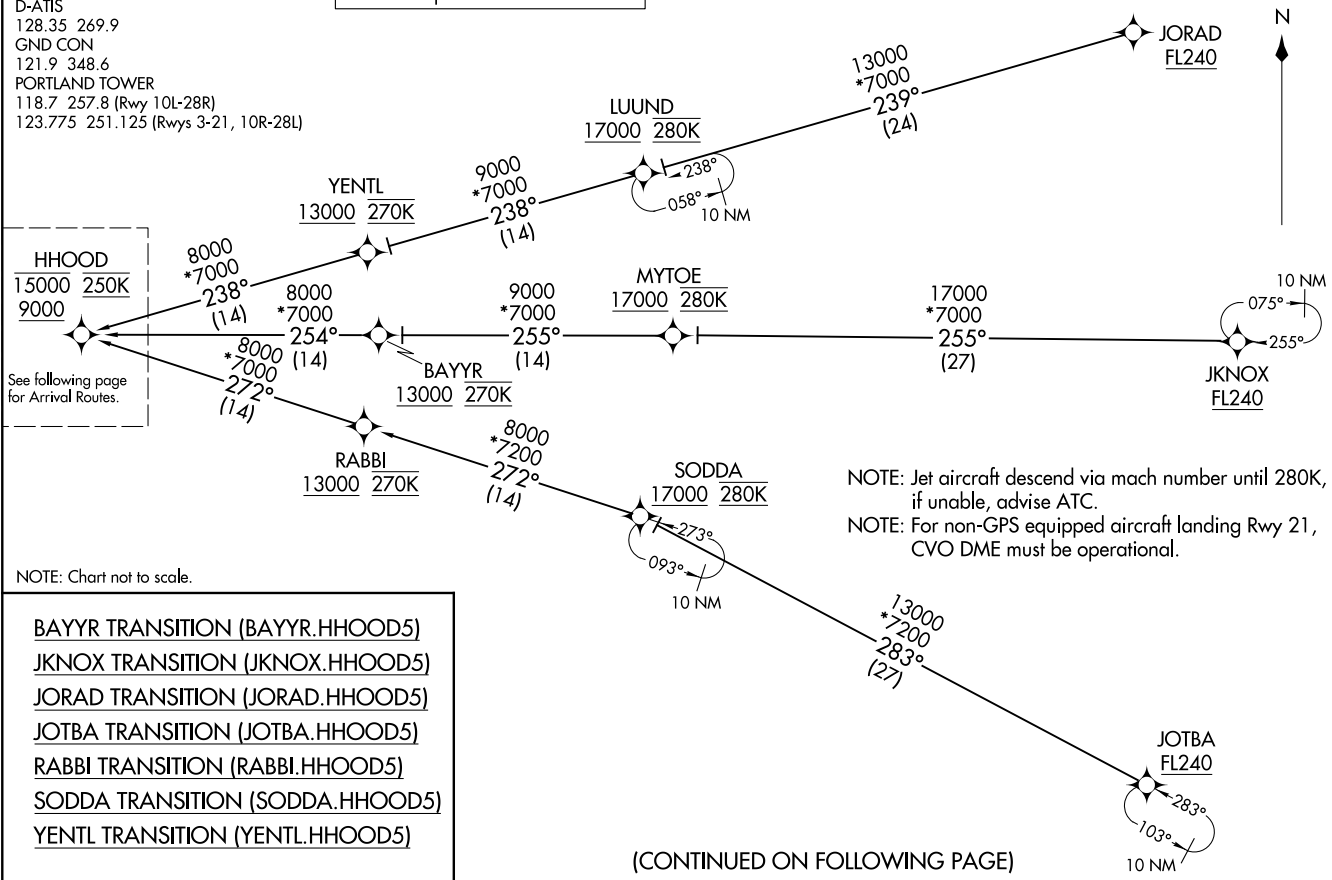


HHOOD FIVE ARRIVAL (RNAV) Transition Routes  
(HHOOD.HHOOD5) 31OCT24

PORTLAND APP CON  
124.35 299.2  
D-ATIS  
128.35 269.9  
GND CON  
121.9 348.6  
PORTLAND TOWER  
118.7 257.8 (Rwy 10L-28R)  
123.775 251.125 (Rwys 3-21, 10R-28L)

RNAV 1 - DME/DME/IRU or GPS.  
RADAR required.



NOTE: Chart not to scale.

- BAYYR TRANSITION (BAYYR.HHOOD5)
- JKNOX TRANSITION (JKNOX.HHOOD5)
- JORAD TRANSITION (JORAD.HHOOD5)
- JOTBA TRANSITION (JOTBA.HHOOD5)
- RABBI TRANSITION (RABBI.HHOOD5)
- SODDA TRANSITION (SODDA.HHOOD5)
- YENTL TRANSITION (YENTL.HHOOD5)

(CONTINUED ON FOLLOWING PAGE)

HHOOD.HHOOD5) 24305  
HHOOD FIVE ARRIVAL (RNAV) Transition Routes  
AL-330 (FAA)

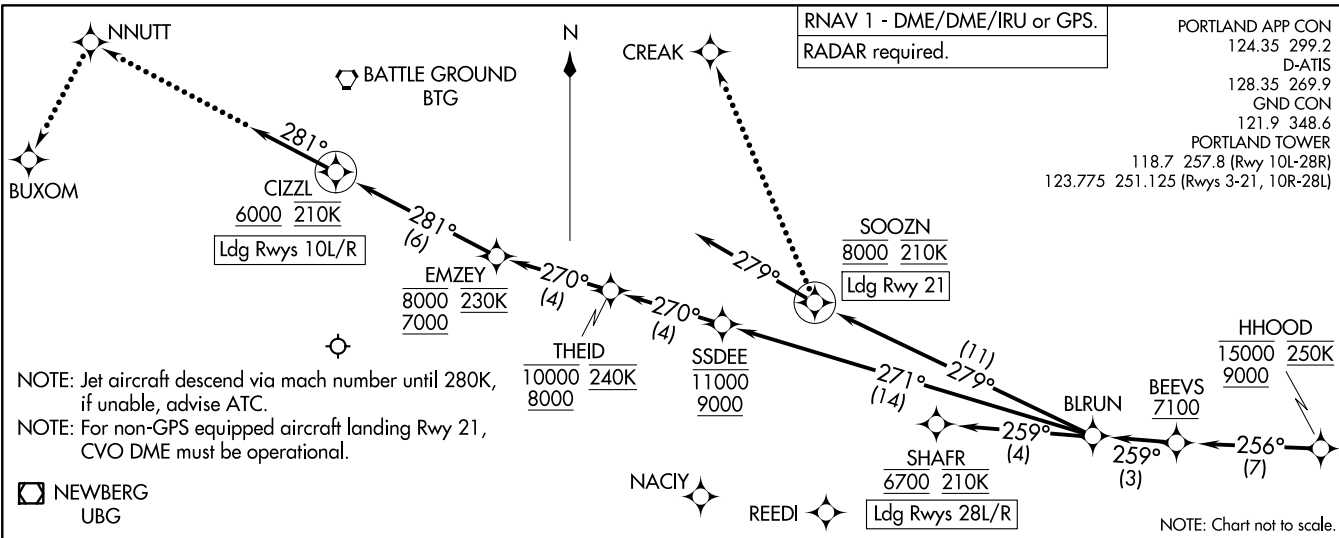
PORTLAND INTL (PDX)  
PORTLAND, OREGON

NOTE: Jet aircraft descend via mach number until 280K, if unable, advise ATC.  
NOTE: For non-GPS equipped aircraft landing Rwy 21, CVO DME must be operational.

HHOOD.FIVE ARRIVAL (RNAV) (HHOOD.HHOOD5) 31OCT24

Arrival Routes

PORTLAND, OREGON  
PORTLAND INTL (PDX)



NOTE: Jet aircraft descend via mach number until 280K, if unable, advise ATC.

NOTE: For non-GPS equipped aircraft landing Rwy 21, CVO DME must be operational.

NEWBERG UBG

RNAV 1 - DME/DME/IRU or GPS.  
RADAR required.

PORTLAND APP CON  
124.35 299.2  
D-ATIS  
128.35 269.9  
GND CON  
121.9 348.6  
PORTLAND TOWER  
118.7 257.8 (Rwy 10L-28R)  
123.775 251.125 (Rwys 3-21, 10R-28L)

ARRIVAL ROUTE DESCRIPTION

From HHOOD on track 256° to cross BEEVS at or above 7100, then on track 259° to BLRUN.

LANDING RUNWAYS 10L/R: From BLRUN on track 271° to cross SSDEE between 9000 and 11000, then on track 270° to cross THEID between 8000 and 10000 and at 240K, then on track 270° to cross EMZEY between 7000 and 8000 and at 230K, then on track 281° to cross CIZZL at or above 6000 and at 210K, then on track 281°. Expect RADAR vectors to final approach course.

LANDING RUNWAY 21: From BLRUN on track 279° to cross SOOZN at 8000 and at 210K, then on track 279°. Expect RADAR vectors to final approach course.

LANDING RUNWAYS 28L/R: From BLRUN on track 259° to cross SHAFR at 6700 and at 210K. Expect RNAV or ILS RWY 28L/R approach.

LOST COMMUNICATIONS

Maintain Rwy transition terminus altitude until established on approach procedure.

RUNWAYS 10L/R: After CIZZL, proceed to NNUTT, then left turn to BUXOM, conduct the ILS or LOC RWY 10L approach.

RUNWAY 21: After SOOZN turn right to CREAK and proceed on the LOC/DME RWY 21 approach.

RUNWAYS 28L/R: After SHAFR proceed on the ILS or LOC RWY 28R approach.

HHOOD.HHOOD5) 24305  
HHOOD.FIVE ARRIVAL (RNAV)

Arrival Routes

PORTLAND INTL (PDX)  
PORTLAND, OREGON

Alt: 330 (FAA)