

# HI-TACAN RWY 10R

TACAN CBU Chan <b>29</b>	APCH CRS <b>111°</b>	Rwy ldg <b>11,000</b> TDZE <b>24</b> Arpt Elev <b>31</b>
-----------------------------	-------------------------	--

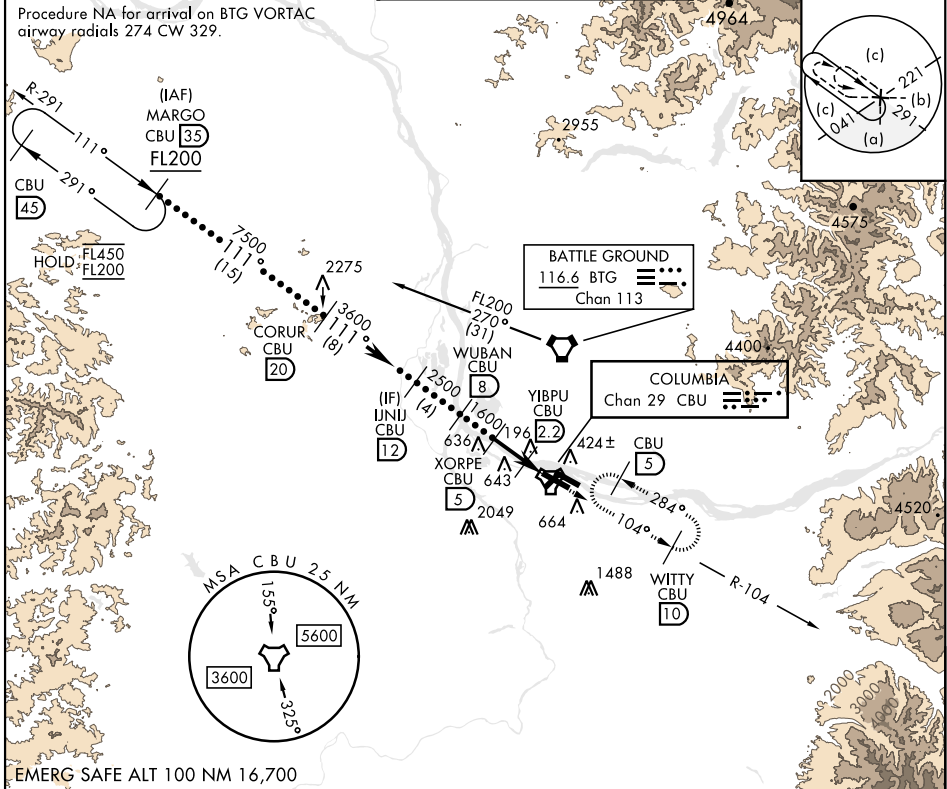
[USAF]

PORTLAND INTL (KPDX)

**ALSIF-2** MISSED APPROACH: Climb to 4000 on CBU TACAN R-104 to WITTY/CBU 10 DME and hold, continue climb-in-hold to 4000.

\* When ALS inop, increase CAT E vis to 1 1/4 miles.

ATIS <b>128.35 269.9</b>	APP CON <b>118.1 284.6</b> (100°-279°) <b>124.35 299.2</b> (280°-099°)	TOWER <b>118.7 257.8</b> Rwy 10L-28R <b>123.775 251.125</b> Rwy 3-21, 10R-28L	GND CON <b>121.9 348.6</b>	CLNC DEL <b>120.125 318.1</b>
-----------------------------	--	---	-------------------------------	----------------------------------



VGSI and ILS glidepath not coincident (VGSI Angle 3.00/TCH 71)

MARGO CBU 35	CORUR CBU 20	IJUN CBU 12	WUBAN CBU 8	XORPE CBU 5	YIBPU CBU 2.2	TACAN	WITTY CBU 10	
FL200	7500	3600	2500	1600	640	0.6	ELEV 31 TDZE 24	
4.4 NM							Rwy 10L ldg 8535'	Rwy 28R ldg 9290'

CATEGORY	C	D	E
S-10R *	460/40	436	(500-34)
CIRCLING	1020-3	989 (1000-3)	1140-3 1109 (1200-3)

REIL Rwy 3, 21  
TDZL/CL Rwy 10R  
MIRL Rwy 3-21  
HIRL Rwy 10L-28R, 28L-10R

# HI-TACAN RWY 10R

NW-1, 26 DEC 2024 to 23 JAN 2025

NW-1, 26 DEC 2024 to 23 JAN 2025