


APP CRS	Rwy Idg	<b>8535</b>
<b>103°</b>	TDZE	<b>30</b>
	Apt Elev	<b>31</b>

# RNAV (RNP) Z RWY 10L

PORTLAND INTL (PDX)

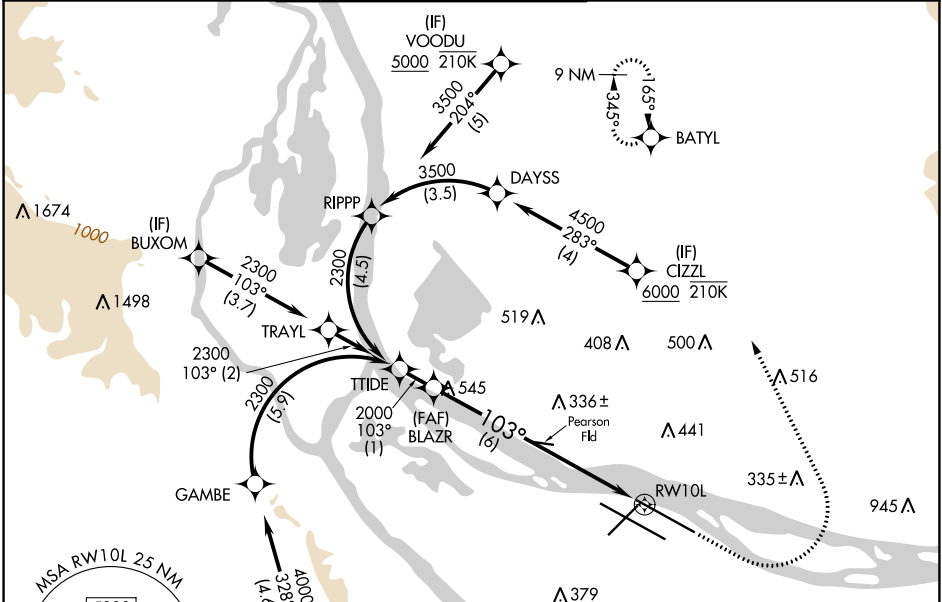
RNP AR APCH - GPS. Authorization required. From DAYSS, RIPPP, or GAMBE: RF.

**▼** For uncompensated Baro-VNAV systems, procedure NA below -5°C or above 54°C. Simultaneous approach authorized.

MALSR 

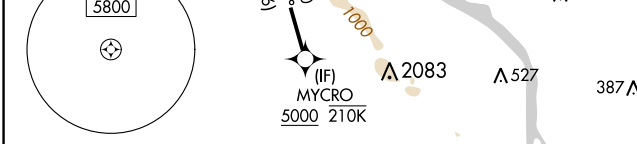
MISSED APPROACH: Climb to 800 then climbing left turn to 4400 direct BATYL and hold, continue climb-in-hold to 4400.

D-ATIS <b>128.35</b> <b>269.9</b>	PORTLAND APP CON <b>124.35 299.2</b>	PORTLAND TOWER Rwy 10L-28R <b>118.7 257.8</b> Rwys 3-21, 10R-28L <b>123.775 251.125</b>	GND CON <b>121.9 348.6</b>	CLNC DEL <b>120.125 318.1</b>	CPDLC
---	---	---	-------------------------------	----------------------------------	-------

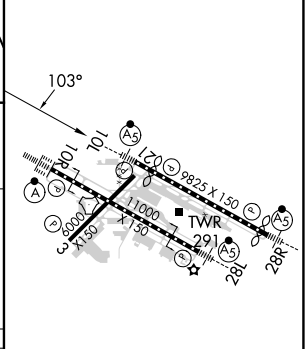
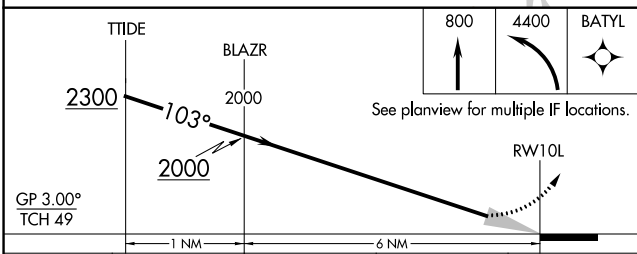


NW-1, 26 DEC 2024 to 23 JAN 2025

NW-1, 26 DEC 2024 to 23 JAN 2025



ELEV 31	<b>D</b> TDZE 30
---------	------------------



CATEGORY	A	B	C	D
RNP 0.30 DA		365/26	335 (400-½)	

**AUTHORIZATION REQUIRED**

REIL Rwys 3 and 21  
TDZ/CL Rwy 10R  
MIRL Rwy 3-21  
HIRL Rwys 10L-28R and 10R-28L