


WAAS CH 56205 W28B	APP CRS 283°	Rwy Idg 11000 TDZE 23 Apt Elev 31
--	------------------------	--

RNAV (GPS) X RWY 28L

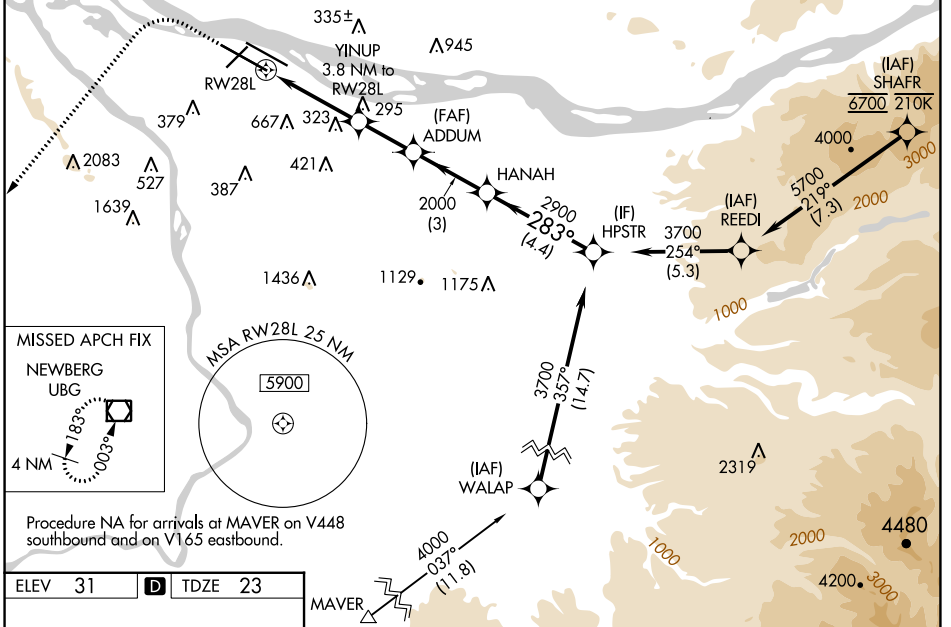
PORTLAND INTL (PDX)

⚠ For uncompensated Baro-VNAV systems, LNAV/VNAV NA below -6°C (22°F) or above 54°C (130°F). Simultaneous approach authorized. LNAV procedure NA during simultaneous operations. DME/DME INOP-0.3 NA. Use of FD or AP providing RNAV track guidance required during simultaneous operations. For inop ALS, increase LNAV Cat C/D visibility to 1½ SM.

MALSR 


MISSED APPROACH: Climb to 2100 then climbing left turn to 4000 direct UBG VOR/DME and hold.


D-ATIS 128.35 269.9	PORTLAND APP CON 124.35 299.2	PORTLAND TOWER Rwy 10L-28R 118.7 257.8 Rwys 3-21, 10R-28L 123.775 251.125	GND CON 121.9 348.6	CLNC DEL 120.125 318.1	CPDLC
---	---	---	-------------------------------	----------------------------------	-------



ELEV 31 **D** TDZE 23

REIL Rwys 3 and 21
TDZ/CL Rwy 10R
MIRL Rwy 3-21
HIRL Rwys 10L-28R and 10R-28L

MAVER  4000 037° (11.8)

2100 4000 UBG 

VGSI and RNAV glidepath not coincident (VGSI Angle 3.00/TCH 72).

*** INAV only**

YINUP 3.8 NM to RW28L
ADDUM 2000
HANAH 2900
HPSTR 3700

RW28L 1280* 2000 283° 3700

GP 3.00° TCH 55

Distances: 1.4, 2.4, 2.2, 3, 4.4 NM

CATEGORY	A	B	C	D
LPV DA		309/22	286 (300-½)	
LNAV/VNAV DA		368/30	345 (400-⅝)	
LNAV MDA	540/24	517 (600-½)	540/55	517 (600-1)
C CIRCLING	720-1 689 (700-1)	760-1 729 (800-1)	1060-3	1029 (1100-3)

NW-1, 26 DEC 2024 to 23 JAN 2025

NW-1, 26 DEC 2024 to 23 JAN 2025