

LOC/DME I-PVD <b>109.3</b> Chan 30	APP CRS <b>047°</b>	Rwy Idg <b>8700</b> TDZE <b>53</b> Apt Elev <b>54</b>
--	------------------------	---

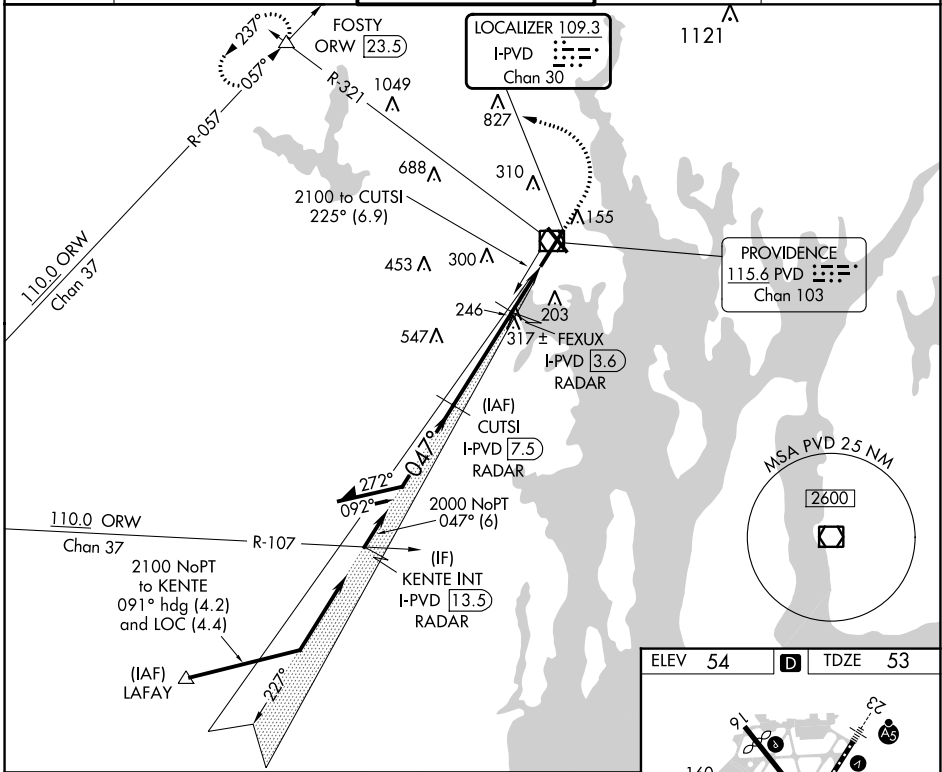
# ILS or LOC RWY 5

RHODE ISLAND TF GREEN INTL (PVD)

**▽** When tower closed: increase S-ILS 5 all Cats and S-LOC 5 Cats A and B visibilities to 3/4 SM, and S-LOC 5 Cats C and D visibility to 1 SM.  
**△** When control tower closed, for inop ALS, increase S-LOC 5 Cats C and D visibility to 1 1/2 SM. RADAR or DME required for localizer minimums.

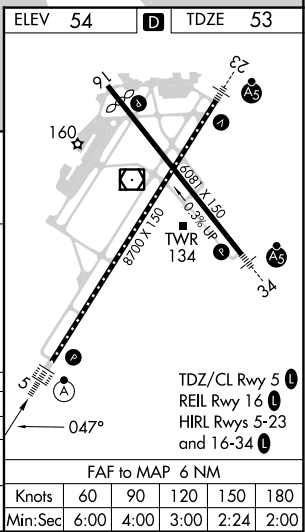
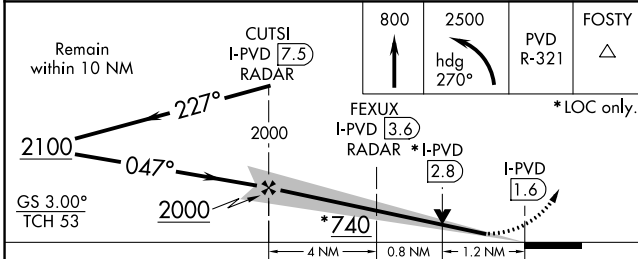
**ALS-2** MISSED APPROACH: Climb to 800 then climbing left turn to 2500 on heading 270° and PVD VOR/DME R-321 to FOSTY INT/ORW 23.5 DME and hold.

D-ATIS <b>124.2</b>	PROVIDENCE APP CON * <b>123.675 244.875</b>	PROVIDENCE TOWER * <b>120.7 (CTAF) 257.8</b>	GND CON <b>121.9 348.6</b>	CLNC DEL <b>126.65 348.6</b>
------------------------	--	---	-------------------------------	---------------------------------



NE-1, 26 DEC 2024 to 23 JAN 2025

NE-1, 26 DEC 2024 to 23 JAN 2025



CATEGORY	A	B	C	D
S-ILS 5	253/18		200 (200-1/2)	
S-LOC 5	500/24 447 (500-1/2)		500/45 447 (500-3/4)	
CIRCLING	560-1 506 (600-1)	640-1 586 (600-1)	640-1 1/2 586 (600-1 1/2)	860-2 1/2 806 (900-2 1/2)