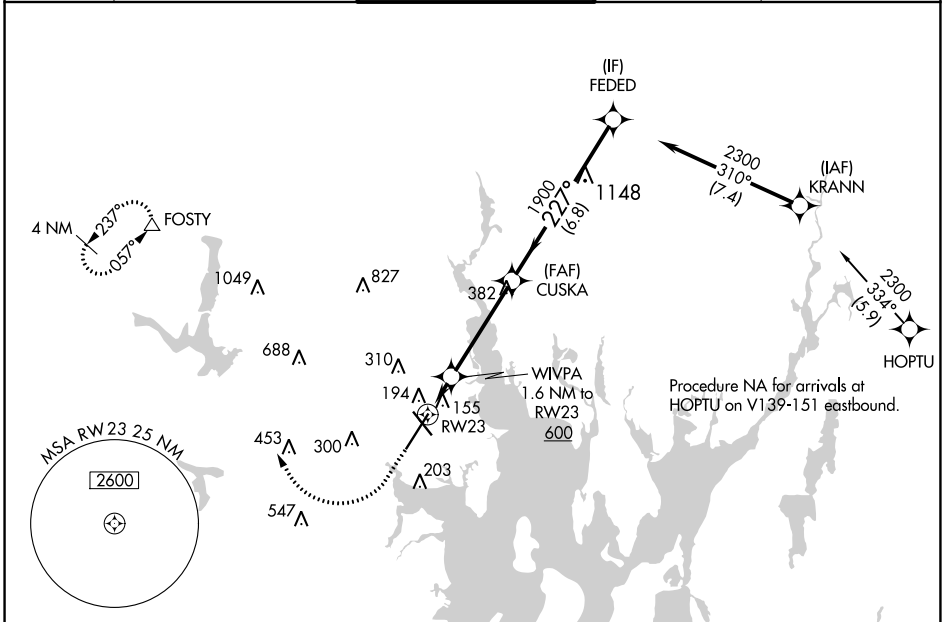


WAAS CH <b>93823</b> <b>W23A</b>	APP CRS <b>227°</b>	Rwy Idg TDZE Apt Elev	<b>8700</b> <b>50</b> <b>54</b>
--	------------------------	-----------------------------	---------------------------------------

# RNAV (GPS) Y RWY 23

RHODE ISLAND TF GREEN INTL (PVD)

RNP APCH - GPS.		MALSR	MISSED APPROACH: Climb to 1700 then climbing right turn to 2500 direct FOSTY and hold.	
<p>▼ For uncompensated Baro-VNAV systems, LNAV/VNAV NA below -16°C or above 54°C. Inop ALS, increase LNAV Cats C/D visibility to RVR 6000. ** RVR 1800 authorized with use of FD or AP or HUD to DA.</p>				
D-ATIS <b>124.2</b>	PROVIDENCE APP CON * <b>123.675 244.875</b>	PROVIDENCE TOWER * <b>120.7 (CTAF) 257.8</b>	GND CON <b>121.9 348.6</b>	CLNC DEL <b>126.65 348.6</b>



NE-1, 26 DEC 2024 to 23 JAN 2025

NE-1, 26 DEC 2024 to 23 JAN 2025

