

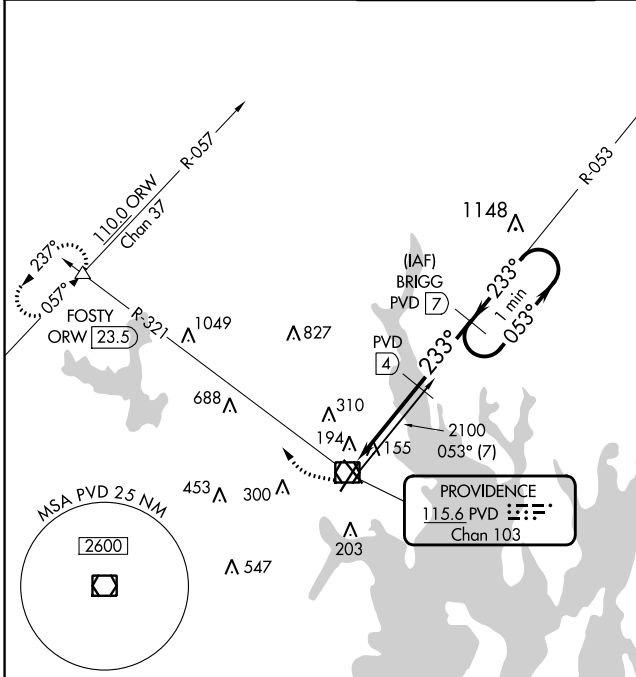
VOR/DME PVD <b>115.6</b> Chan <b>103</b>	APP CRS <b>233°</b>	Rwy Idg TDZE Apt Elev <b>8700</b> <b>50</b> <b>54</b>
--	------------------------	--

# VOR/DME RWY 23

RHODE ISLAND TF GREEN INTL (PVD)

<p>For inoperative MALS R increase S-23 Cats A, B, and C visibility to RVR 5000, Cat D visibility to RVR 6000.</p>	<p>MALS R</p>	<p>MISSED APPROACH: Climbing right turn to 2500 via PVD R-321 to FOSTY INT and hold.</p>
	<p>MALS R</p>	

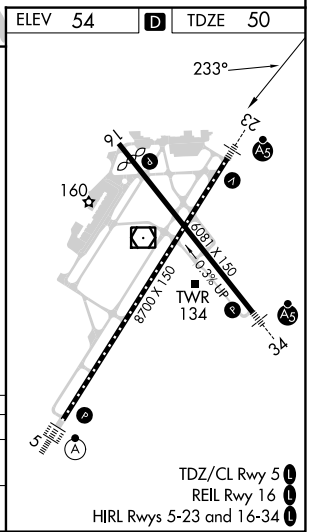
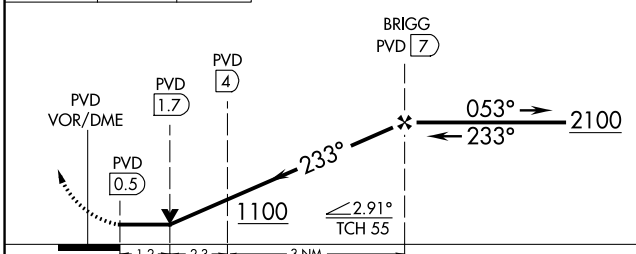
D-ATIS <b>124.2</b>	PROVIDENCE APP CON * <b>123.675 244.875</b>	PROVIDENCE TOWER * <b>120.7</b> (CTAF) <b>257.8</b>	GND CON <b>121.9 348.6</b>	CLNC DEL <b>126.65 348.6</b>
------------------------	--	--	-------------------------------	---------------------------------



NE-1, 26 DEC 2024 to 23 JAN 2025

NE-1, 26 DEC 2024 to 23 JAN 2025

2500	PVD R-321	FOSTY	<p>VGSI and descent angle not coincident (VGSI Angle 3.00/TCH 41).</p> <p>One Minute Holding Pattern</p>
------	-----------	-------	--



CATEGORY	A	B	C	D
S-23	500/40	450 (500-¾)	500/45 450 (500-¾)	500/50 450 (500-1)
CIRCLING	560-1 506 (600-1)	640-1 586 (600-1)	640-1½ 586 (600-1½)	860-2½ 806 (900-2½)