

LOC I-FTR <b>108.3</b>	APP CRS <b>260°</b>	Rwy ldg <b>10496</b>
		TDZE <b>4659</b>
		Apt Elev <b>4729</b>

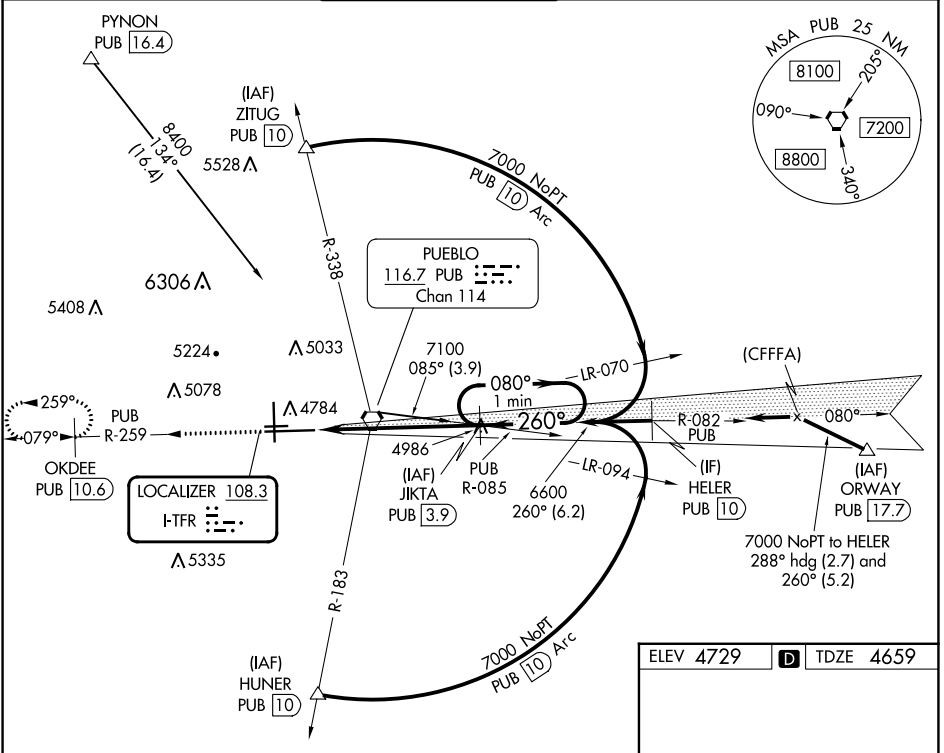
# ILS or LOC RWY 26L

PUEBLO MEML (PUB)

DME required. RADAR required for procedure entry at PYNON.

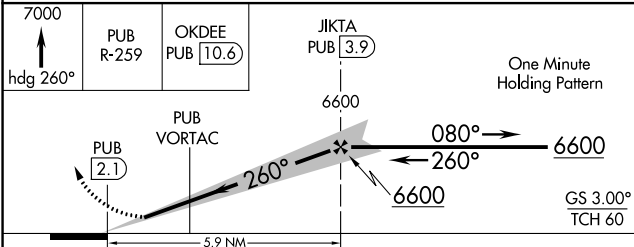
**MISSED APPROACH:** Climb to 7000 on heading 260° and on PUB VORTAC R-259 to OKDEE/PUB 10.6 DME and hold.

ATIS <b>125.25</b>	DENVER APP CON ★ <b>120.1 290.5</b>	PUEBLO TOWER ★ <b>119.1 (CTAF) 257.8</b>	GND CON <b>121.9</b>	CLNC DEL <b>120.9</b>	UNICOM <b>122.95</b>
-----------------------	--	---	-------------------------	--------------------------	-------------------------

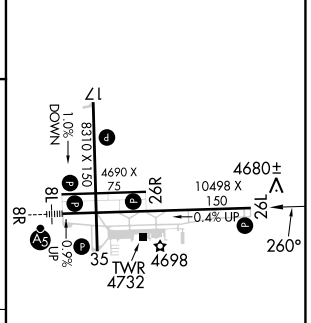


SW-1, 26 DEC 2024 to 23 JAN 2025

SW-1, 26 DEC 2024 to 23 JAN 2025



ELEV 4729	TDZE 4659
-----------	-----------



CATEGORY	A	B	C	D
S-ILS 26L	4859-¾ 200 (200-¾)			
S-LOC 26L	5160-1	501 (500-1)	5160-1¾	501 (500-1¾)
CIRCLING	5340-1	611 (700-1)	5580-2½ 851 (900-2½)	5800-3 1071 (1100-3)

HIRL Rwy 8R-26L  
MIRL Rws 17-35 and 8L-26R  
REIL Rws 8L, 17, 26L, 26R and 35