

VORTAC PUB 116.7 Chan 114	APP CRS 252°	Rwy Idg 10496 TDZE 4659 Apt Elev 4729
---	------------------------	--

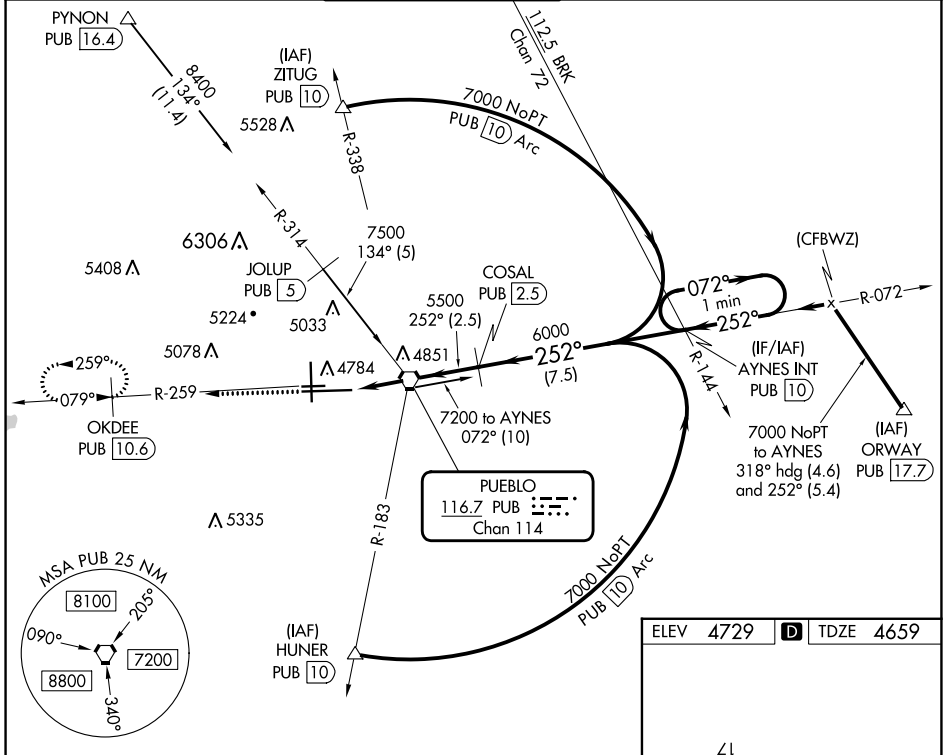
VOR RWY 26L

PUEBLO MEML (PUB)

DME required. RADAR required for procedure entry at PYNON.

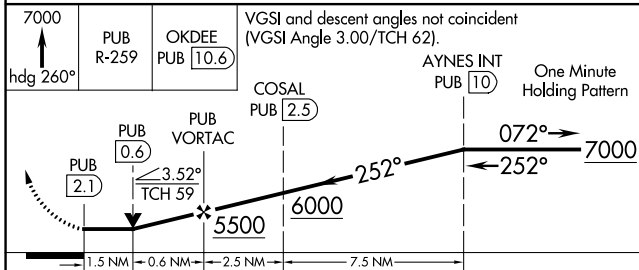
MISSED APPROACH: Climb to 7000 on heading 260° and on PUB VORTAC R-259 to OKDEE/PUB 10.6 DME and hold.

ATIS 125.25	DENVER APP CON ★ 120.1 290.5	PUEBLO TOWER ★ 119.1 (CTAF) 0 257.8	GND CON 121.9	CLNC DEL 120.9	UNICOM 122.95
-----------------------	--	---	-------------------------	--------------------------	-------------------------



SW-1, 26 DEC 2024 to 23 JAN 2025

SW-1, 26 DEC 2024 to 23 JAN 2025



CATEGORY	A	B	C	D
S-26L	5120-1	461 (400-1)	5120-1 ³ / ₈ 461 (400-1 ³ / ₈)	NA
CIRCLING	5340-1	611 (700-1)	NA	

ELEV 4729	TDZE 4659
-----------	-----------

