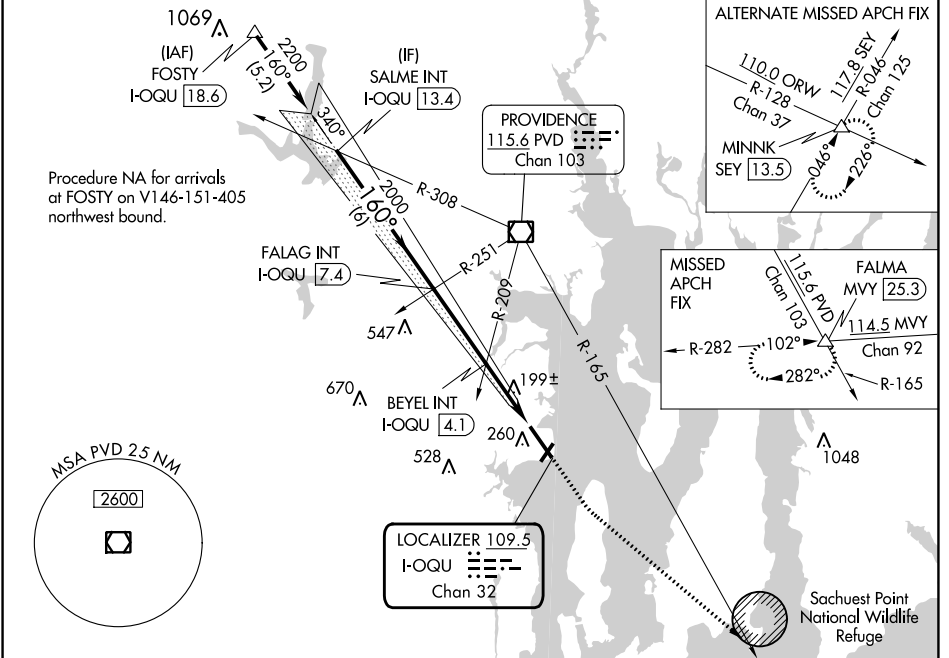


LOC/DME I-OQU	APP CRS	Rwy ldg	7100
109.5	160°	TDZE	18
Chan 32		Apt Elev	18

ILS or LOC RWY 16

QUONSET STATE (OQU)

<p>Circling Rwy 5 NA at night. For inop ALS, increase S-LOC 16 Cat C/D visibility to 2½ SM.</p>	<p>MALS R</p>	<p>MISSED APPROACH: Climb to 500 then climbing left turn to 3000 on heading 145° and PVD VOR/DME R-165 to FALMA and hold.</p>			
		<p>ATIS ★ 118.6</p>	<p>PROVIDENCE APP CON ★ 123.675 244.875</p>	<p>QUONSET TOWER ★ 126.35 (CTAF) 0 252.9</p>	<p>GND CON 134.5 226.675</p>



<p>VGSI and ILS glidepath not coincident (VGSI Angle 3.00/TCH 58).</p> <p>SALME INT I-OQU 13.4</p> <p>FALAG INT I-OQU 7.4</p> <p>BEYEL INT I-OQU 4.1</p> <p>I-OQU 1.3</p> <p>I-OQU 2.4</p> <p>*840</p> <p>*LOC only</p>	<p>500</p> <p>3000</p> <p>hdg 145°</p> <p>PVD R-165</p> <p>FALMA</p>	<p>ELEV 18</p> <p>TDZE 18</p>																																		
<table border="1"> <thead> <tr> <th>CATEGORY</th> <th>A</th> <th>B</th> <th>C</th> <th>D</th> </tr> </thead> <tbody> <tr> <td>S-ILS 16</td> <td colspan="4">218-½ 200 (200-½)</td> </tr> <tr> <td>S-LOC 16</td> <td>840-½ 822 (900-½)</td> <td>840-¾ 822 (900-¾)</td> <td>840-1⅞</td> <td>822 (900-1⅞)</td> </tr> <tr> <td>C CIRCLING</td> <td>840-1¼</td> <td>822 (900-1¼)</td> <td>840-2½ 822 (900-2½)</td> <td>880-2¾ 862 (900-2¾)</td> </tr> <tr> <td colspan="5" style="text-align:center">BEYEL FIX MINIMUMS</td> </tr> <tr> <td>S-LOC 16</td> <td>460-½</td> <td>442 (500-½)</td> <td>460-⅞</td> <td>442 (500-⅞)</td> </tr> <tr> <td>C CIRCLING</td> <td>620-1</td> <td>602 (700-1)</td> <td>620-1¾ 602 (700-1¾)</td> <td>880-2¾ 862 (900-2¾)</td> </tr> </tbody> </table>	CATEGORY	A	B	C	D	S-ILS 16	218-½ 200 (200-½)				S-LOC 16	840-½ 822 (900-½)	840-¾ 822 (900-¾)	840-1⅞	822 (900-1⅞)	C CIRCLING	840-1¼	822 (900-1¼)	840-2½ 822 (900-2½)	880-2¾ 862 (900-2¾)	BEYEL FIX MINIMUMS					S-LOC 16	460-½	442 (500-½)	460-⅞	442 (500-⅞)	C CIRCLING	620-1	602 (700-1)	620-1¾ 602 (700-1¾)	880-2¾ 862 (900-2¾)	<p>TWR 122</p> <p>HIRL Rwy 16-34</p> <p>MIRL Rwy 5-23</p> <p>REIL Rws 5 and 23</p> <p>FAF to MAP 6.1 NM</p> <p>Knots: 60 90 120 150 180</p> <p>Min:Sec: 6:06 4:04 3:03 2:26 2:02</p>
CATEGORY	A	B	C	D																																
S-ILS 16	218-½ 200 (200-½)																																			
S-LOC 16	840-½ 822 (900-½)	840-¾ 822 (900-¾)	840-1⅞	822 (900-1⅞)																																
C CIRCLING	840-1¼	822 (900-1¼)	840-2½ 822 (900-2½)	880-2¾ 862 (900-2¾)																																
BEYEL FIX MINIMUMS																																				
S-LOC 16	460-½	442 (500-½)	460-⅞	442 (500-⅞)																																
C CIRCLING	620-1	602 (700-1)	620-1¾ 602 (700-1¾)	880-2¾ 862 (900-2¾)																																

NE-1, 26 DEC 2024 to 23 JAN 2025

NE-1, 26 DEC 2024 to 23 JAN 2025