

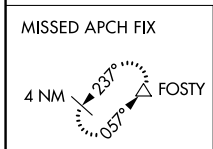
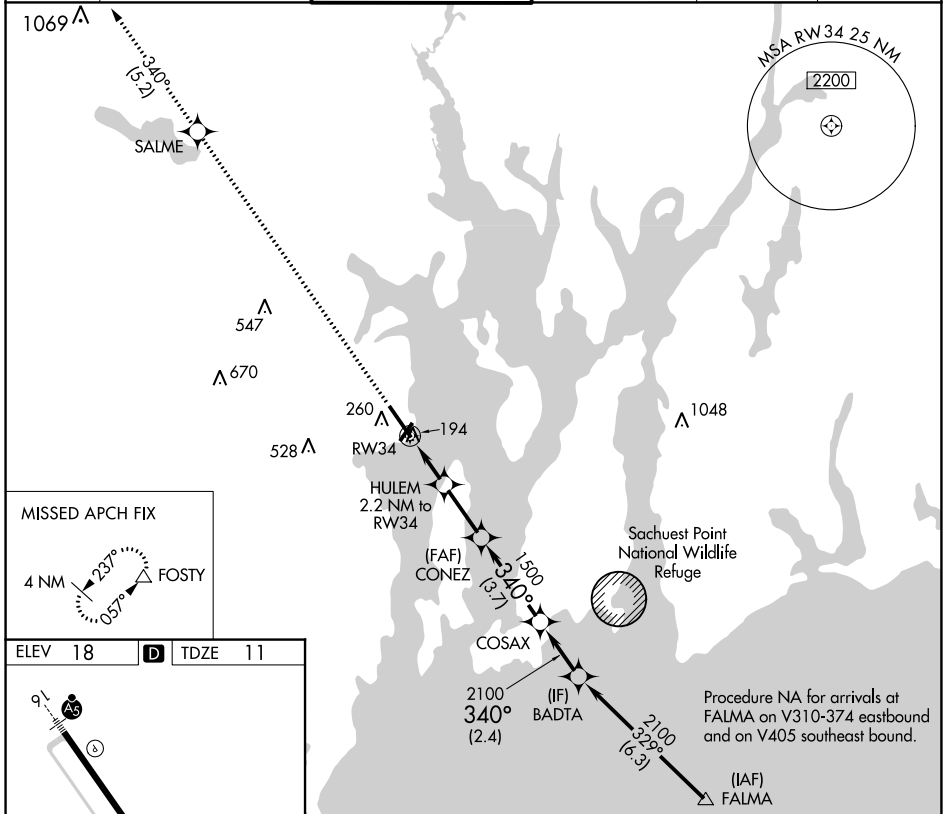
APP CRS	Rwy Idg	7100
340°	TDZE	11
	Apt Elev	18

RNAV (GPS) RWY 34

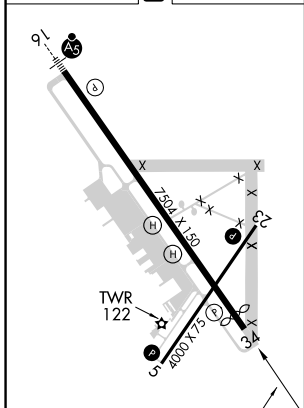
QUONSET STATE (OQU)

	Circling Rwy 5 NA at night. Rwy 34 helicopter visibility reduction below 1 SM NA. DME/DME RNP-0.3 NA.	MISSED APPROACH: Climb to 2500 direct SALME and on track 340° to FOSTY and hold.

ATIS ★	PROVIDENCE APP CON ★	QUONSET TOWER ★	GND CON	CLNC DEL	UNICOM
118.6	123.675 244.875	126.35 (CTAF) 0 252.9	134.5 226.675	134.5	122.95



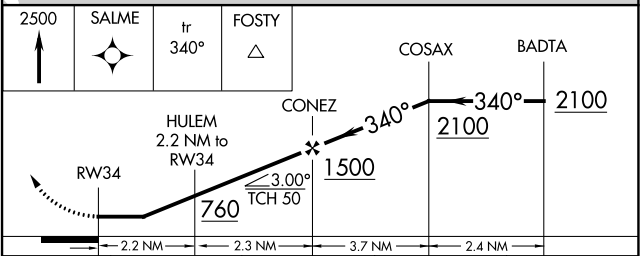
ELEV	18	D	TDZE	11
------	-----------	----------	------	-----------



HIRL Rwy 16-34

MIRL Rwy 5-23

REIL Rwy 5 and 23



CATEGORY	A	B	C	D
LNNAV MDA	460-1	449 (500-1)	460-1 ³ / ₈	449 (500-1 ³ / ₈)
CIRCLING	620-1	602 (700-1)	620-1 ³ / ₄	880-2 ³ / ₄ 862 (900-2 ³ / ₄)

NE-1, 26 DEC 2024 to 23 JAN 2025

NE-1, 26 DEC 2024 to 23 JAN 2025