

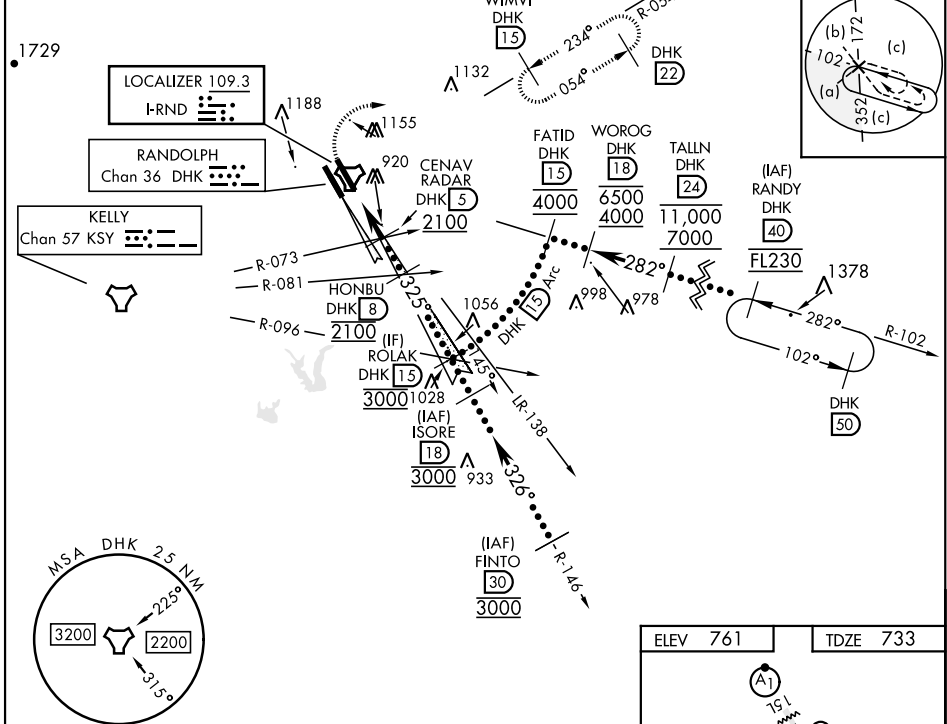
HI-ILS or LOC Z RWY 33R

LOC I-RND 109.3	APCH CRS 325°	Rwy ldg TDZE Arprt Elev 8351 733 761	[USAF]	RANDOLPH AFB (KRND)
---------------------------	-------------------------	--	--------	---------------------

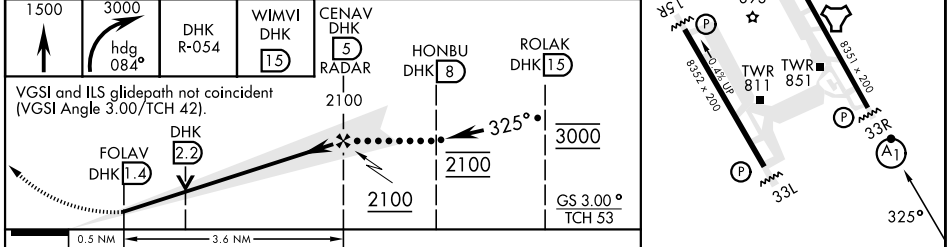
RADAR or DME required		ALSF-1 	MISSED APPROACH: Climb to 1500, then climbing right turn heading 084° to 3000, intercept DHK R-054 to WIMVI and hold.
-----------------------	--	------------	---

ATIS ★ 290.525	SAN ANTONIO APP CON 128.05 318.1	TOWER ★ 128.25 294.7	GND CON 119.65 275.8	CLNC DEL (RWY 15L-33R) 338.35	HANGOVER ATIS ★ 327.8	HANGOVER TOWER ★ 120.5 291.1	HANGOVER GND CON 124.75 353.75
--------------------------	--	--------------------------------	--------------------------------	---	---------------------------------	--	--

Simultaneous approaches authorized with Rwy 33L and 33R.



EMERG SAFE ALT 100 NM 4100



ELEV 761	TDZE 733
HIRL all rwys	
ALS Rwy 15L nstd len 2100'	
FAF to MAP 3.6 NM	
Knots	120 140 160 180 200
Min:Sec	1:48 1:33 1:21 1:12 1:05

HI-ILS or LOC Z RWY 33R



SC-3, 26 DEC 2024 to 23 JAN 2025

SC-3, 26 DEC 2024 to 23 JAN 2025