

# HI-TACAN B

TACAN DHK Chan <b>36</b>	APCH CRS <b>326°</b>	Rwy ldg TDZE <b>N/A</b> Arprt Elev <b>761</b>
--------------------------	----------------------	--

[USAF]

RANDOLPH AFB (KRND)

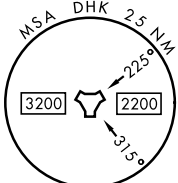
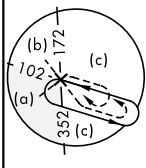
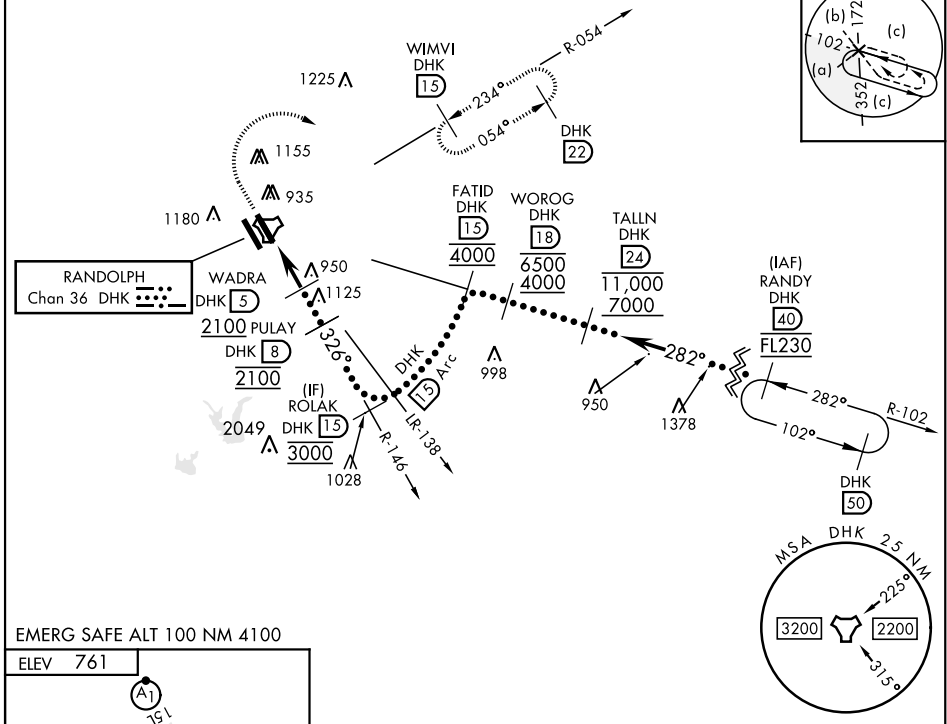
RADAR required for missed approach monitoring

\* Circling not authorized SW of Rwy 15L-33R.

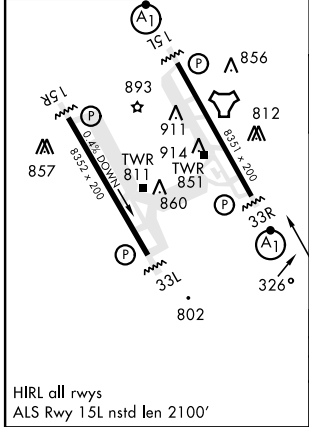
MISSED APPROACH: Track 327° to 1500, then climbing right turn heading 084° to 3000. Intercept DHK TACAN R-054 direct WIMVI and hold.

ATIS ★ <b>290.525</b>	SAN ANTONIO APP CON <b>128.05 318.1</b>	TOWER ★ <b>128.25 294.7</b>	GND CON <b>119.65 275.8</b>	CLNC DEL (RWY 15L-33R) <b>338.35</b>	HANGOVER ATIS ★ <b>327.8</b>	HANGOVER TOWER ★ <b>120.5 291.1</b>	HANGOVER GND CON <b>124.75 353.75</b>
-----------------------	---	-----------------------------	-----------------------------	--------------------------------------	------------------------------	-------------------------------------	---------------------------------------

•1585



EMERG SAFE ALT 100 NM 4100  
ELEV 761



1500	3000	WIMVI DHK 15								
tr 327°	hdg 084°	DHK R-054								
<table border="1"> <tr> <td>WADRA DHK 5</td> <td>PULAY DHK 8</td> <td>3000</td> </tr> <tr> <td>JUNAB DHK 1.4</td> <td>2100</td> <td>2100</td> </tr> </table>			WADRA DHK 5	PULAY DHK 8	3000	JUNAB DHK 1.4	2100	2100		
WADRA DHK 5	PULAY DHK 8	3000								
JUNAB DHK 1.4	2100	2100								
<table border="1"> <tr> <td>CATEGORY</td> <td>C</td> <td>D</td> <td>E</td> </tr> <tr> <td>CIRCLING*</td> <td>1260-1½ 499 (500-1½)</td> <td>1800-3</td> <td>1039 (1100-3)</td> </tr> </table>			CATEGORY	C	D	E	CIRCLING*	1260-1½ 499 (500-1½)	1800-3	1039 (1100-3)
CATEGORY	C	D	E							
CIRCLING*	1260-1½ 499 (500-1½)	1800-3	1039 (1100-3)							

# HI-TACAN B

SC-3, 26 DEC 2024 to 23 JAN 2025

SC-3, 26 DEC 2024 to 23 JAN 2025