

UNIVERSAL CITY, TEXAS

RNAV (GPS) RWY 15L

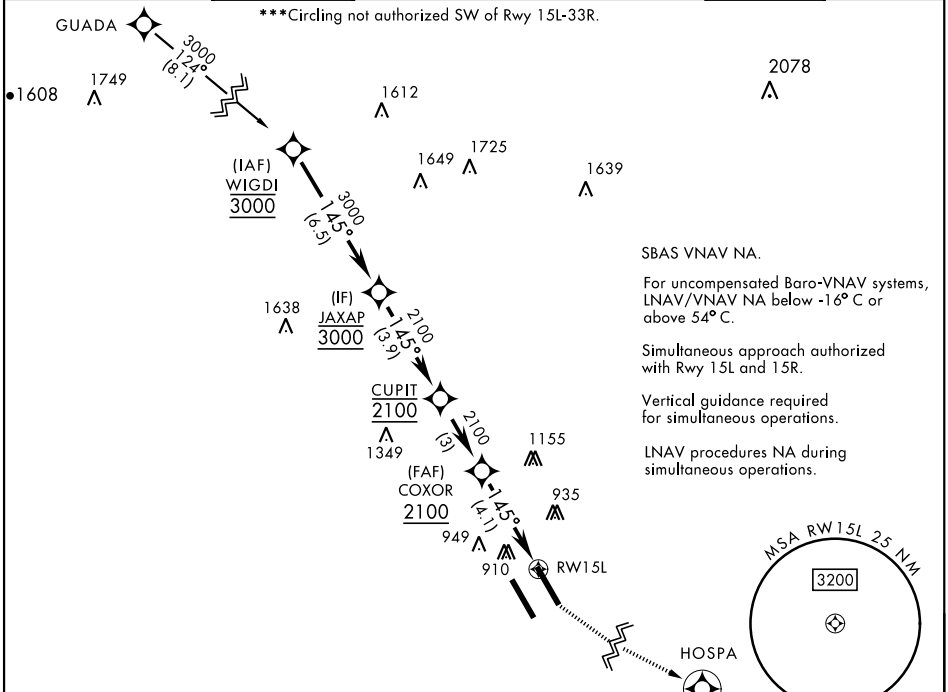
| | | |
|-------------|-----------|-------------|
| APCH CRS | Rwy Idg | 8351 |
| 145° | TDZE | 742 |
| | Arpt Elev | 761 |

[USAF]

RANDOLPH AFB (KRND)

| | | | |
|---|--|------------|--|
| RNP APCH - GPS | | ALSF-1 | MISSED APPROACH: Climb to 1500, then climbing left turn to 3000 direct HOSPA. Expect ATC instructions. |
| *When ALS inop, increase CAT ABC RVR to 45, vis to 7/8 mile, CAT DE RVR to 50, vis to 1 mile. **When ALS inop, increase CAT AB RVR to 55, vis to 1 mile; CAT CDE vis to 1 1/8 miles. | | | |

| | | | | | | | |
|----------------|---------------------|---------------------|---------------------|------------------------|-----------------|--------------------|----------------------|
| ATIS ★ | SAN ANTONIO APP CON | TOWER ★ | GND CON | CLNC DEL (RWY 15L-33R) | HANGOVER ATIS ★ | HANGOVER TOWER ★ | HANGOVER GND CON |
| 290.525 | 128.05 318.1 | 128.25 294.7 | 119.65 275.8 | 338.35 | 327.8 | 120.5 291.1 | 124.75 353.75 |



| | | | | | | | |
|---|--------------------------|--------------------------|-------------------------------|--------------------------|-----------|----------|-------|
| WIGDI | | | | | 1500 | 3000 | HOSPA |
| | | | | | | | |
| ELEV 761 | | | | | TDZE 742 | | |
| | | | | | | | |
| CATEGORY | A | B | C | D | E | | |
| LNAV/VNAV DA * | 1043/40 301 (300-3/4) | 1054/40 312 (300-3/4) | 1062/40 320 (400-3/4) | 1073/40 331 (400-3/4) | | | |
| LNAV MDA** | 1260/40 518 (500-3/4) | | 1260-1/4 | 518 | (500-1/4) | | |
| CIRCLING *** | 1260-1 | 499 (500-1) | 1260-1 1/2 499 (500-1 1/2) | 1800-3 | 1039 | (1100-3) | |
| HIRL all rwys ALS Rwy 15L nstd len 2100' | | | | | | | |

UNIVERSAL CITY, TEXAS

29°32'N-98°17'W

RANDOLPH AFB (KRND)

Amtd 4 28DEC23

RNAV (GPS) RWY 15L

SC-3, 26 DEC 2024 to 23 JAN 2025

SC-3, 26 DEC 2024 to 23 JAN 2025