

# RNAV (GPS) RWY 15R

APCH CRS	Rwy Idg	<b>8352</b>
<b>145°</b>	TDZE	<b>761</b>
	Arprt Elev	<b>761</b>

[USAF]

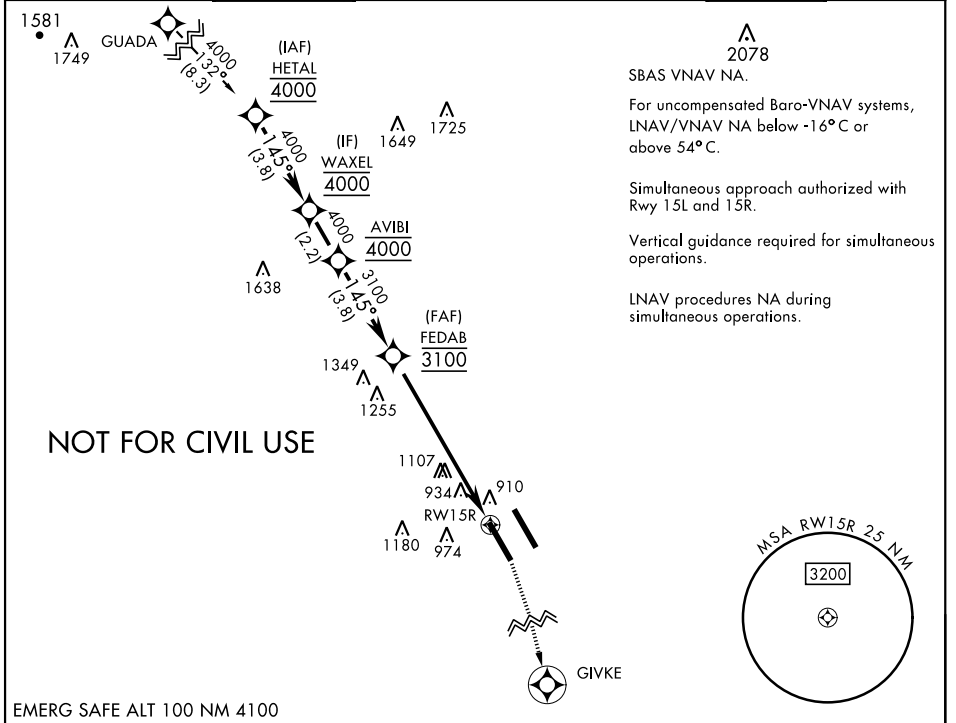
RANDOLPH AFB (KRND)

RNP APCH - GPS

\* Circling not authorized NE of Rwy 15R-33L.

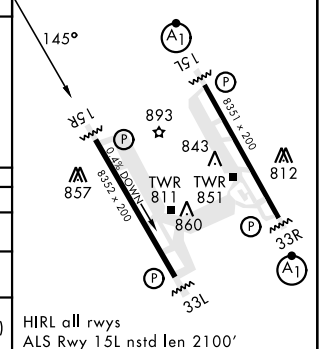
MISSED APPROACH: Climb to 1600 then climbing right turn to 3000 direct GIVKE. Expect ATC instructions.

ATIS ★	SAN ANTONIO APP CON	TOWER ★	GND CON	CLNC DEL (RWY 15L-33R)	HANGOVER ATIS ★	HANGOVER TOWER ★	HANGOVER GND CON
<b>290.525</b>	<b>128.05 318.1</b>	<b>128.25 294.7</b>	<b>119.65 275.8</b>	<b>338.35</b>	<b>327.8</b>	<b>120.5 291.1</b>	<b>124.75 353.75</b>



EMERG SAFE ALT 100 NM 4100

			1600	3000	GIVKE	ELEV 761	TDZE 761
	HETAL	WAXEL	AVIBI	FEDAB			
	4000	4000	4000	3100			
	GP 3.00° TCH 47				2.2 NM to RWY 15R		
					7.2 NM		
CATEGORY	A	B	C	D	E		
LNAV/VNAV DA	1206-1½		445	(500-1½)			
LNAV MDA	1520/55 759 (800-1)	1520-1¼ 759 (800-1¼)	1520-2	759 (800-2)			
CIRCLING*	1520-1 759 (800-1)	1520-1¼ 759 (800-1¼)	1520-2¼ 759 (800-2¼)	1800-3	1039 (1100-3)		
						HIRL all rwy ALS Rwy 15L nstd len 2100'	



SC-3, 26 DEC 2024 to 23 JAN 2025

SC-3, 26 DEC 2024 to 23 JAN 2025

# RNAV (GPS) RWY 15R