

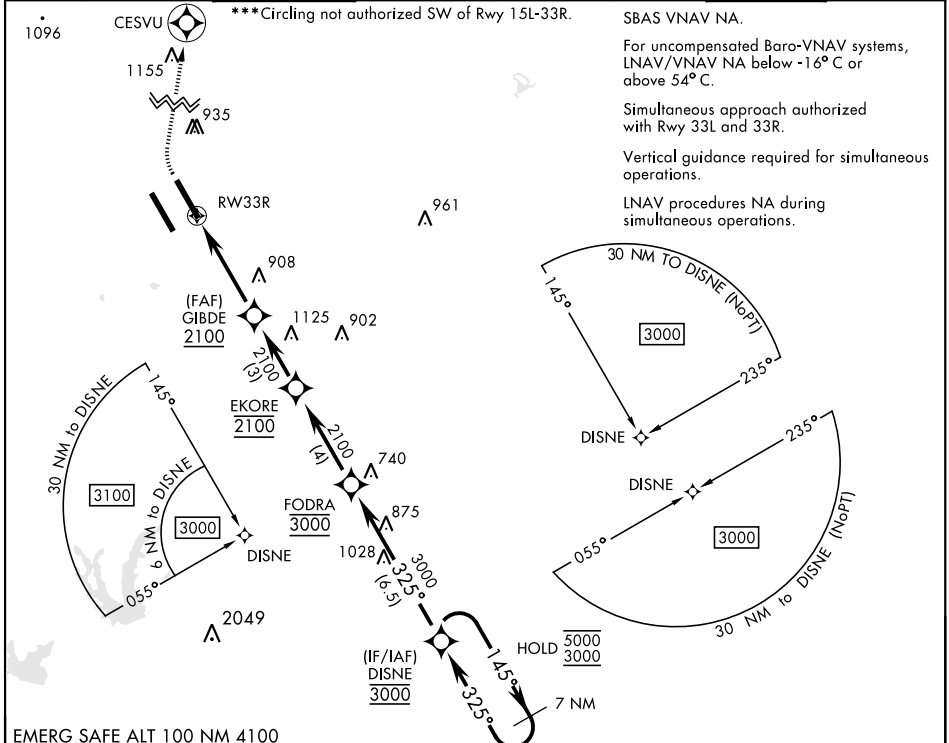
RNAV (GPS) RWY 33R

APCH CRS 325°	Rwy Idg TDZE Arprt Elev	8351 733 761
-------------------------	-------------------------------	---

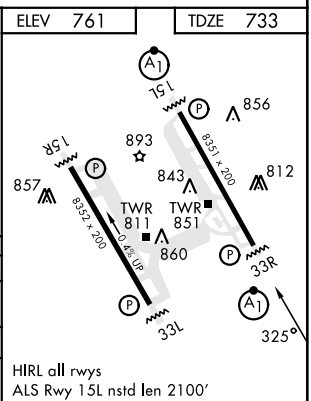
[USAF]

RANDOLPH AFB (KRND)

RNP APCH - GPS		ALSF-1 		MISSED APPROACH: Climb to 1500 then climbing right turn to 3000 direct CESVU. Expect ATC instructions.			
*When ALS inop, increase CAT ABCD RVR to 40, vis to 3/8 mile; CAT E RVR to 45, vis to 7/8 mile;							
**When ALS inop, increase CAT AB RVR to 55 and vis to 1 mile; CAT CDE vis to 1 3/8 miles.							
ATIS ★	SAN ANTONIO APP CON	TOWER ★	GND CON	CLNC DEL (RWY 15L-33R)	HANGOVER ATIS ★	HANGOVER TOWER ★	HANGOVER GND CON
290.525	128.05 318.1	128.25 294.7	119.65 275.8	338.35	327.8	120.5 291.1	124.75 353.75



EMERG SAFE ALT 100 NM 4100		ELEV 761		TDZE 733	
1500	3000	CESVU	VGSi and RNAV glidepath not coincident (VGSi Angle 3.00/TCH 42).		
7 NM Holding Pattern					
RW33R		GIBDE	EKORE	FODRA	DISNE
1.4 NM to RW33R		2100	2100	3000	5000/3000
4.2 NM		GP 3.00° TCH 53			
CATEGORY	A	B	C	D	E
LNAV/VNAV DA*	983/24 250 (300-1/2)		987/24 254 (300-1/2)		1025/24 292 (300-1/2)
LNAV MDA**	1200/24 467 (500-1/2)		1200/50 467 (500-1)		
CIRCLING***	1240-1 479 (500-1)		1260-1 1/2 499 (500-1 1/2)		1800-3 1039 (1100-3)
		HIRL all rwys ALS Rwy 15L nstd len 2100'			



SC-3, 26 DEC 2024 to 23 JAN 2025

SC-3, 26 DEC 2024 to 23 JAN 2025

RNAV (GPS) RWY 33R