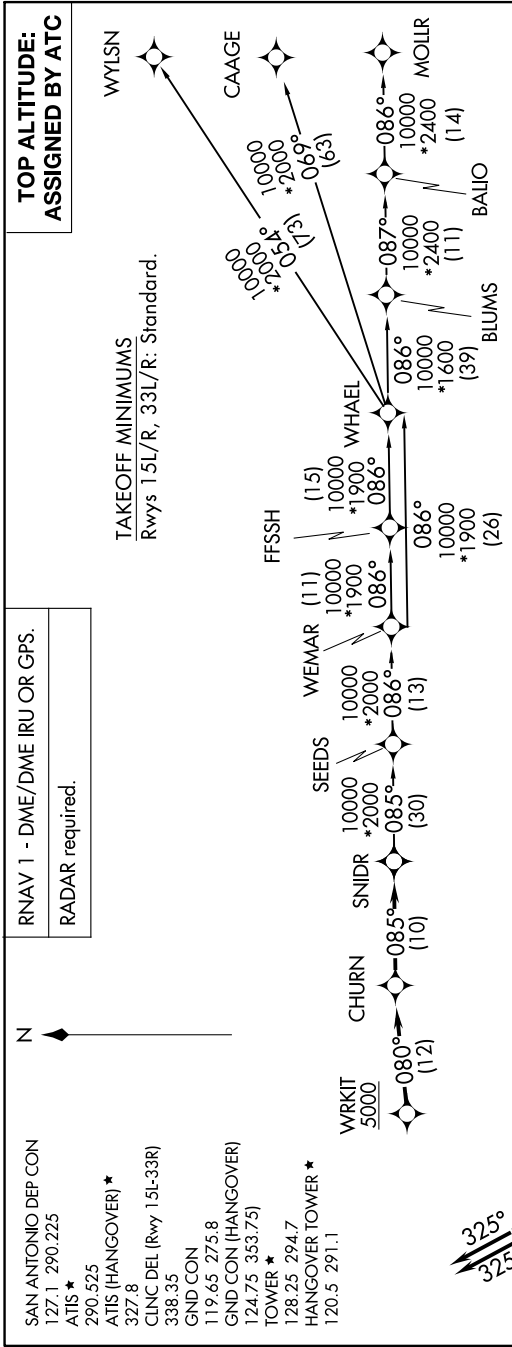


SNIDR ONE DEPARTURE (RNAV)

SC-3, 26 DEC 2024 to 23 JAN 2025



DEPARTURE ROUTE DESCRIPTION

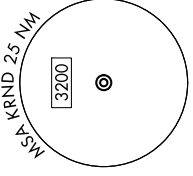
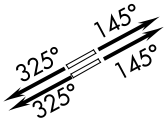
TAKEOFF RUNWAYS 15L/R: Climb on heading 145° or as assigned by ATC, for vectors to WRKIT, thence . . .

TAKEOFF RUNWAYS 33L/R: Climb on heading 325° or as assigned by ATC, for vectors to WRKIT, thence . . .

. . . on track 080° to CHURN, then on track 085° to SNIDR, then on transition. Maintain ATC assigned altitude.

BLUMS TRANSITION (SNIDR1.BLUMS)
 CAAGE TRANSITION (SNIDR1.CAAGE)
 FFSSH TRANSITION (SNIDR1.FFSSH)
 MOLLR TRANSITION (SNIDR1.MOLLR)
 SEEDS TRANSITION (SNIDR1.SEEDS)
 WEMAR TRANSITION (SNIDR1.WEMAR)
 WHAEL TRANSITION (SNIDR1.WHAEL)
 WYLSN TRANSITION (SNIDR1.WYLSN)

- SAN ANTONIO DEP CON
127.1 290.225
ATIS *
290.525
ATIS (HANGOVER) *
327.8
CINC DEL (Rwy 15L-33R)
338.35
GND CON
119.65 275.8
GND CON (HANGOVER)
124.75 353.75
TOWER *
128.25 294.7
HANGOVER TOWER *
120.5 291.1



NOTE: Chart not to scale.

SC-3, 26 DEC 2024 to 23 JAN 2025