

TACAN RWY 33L

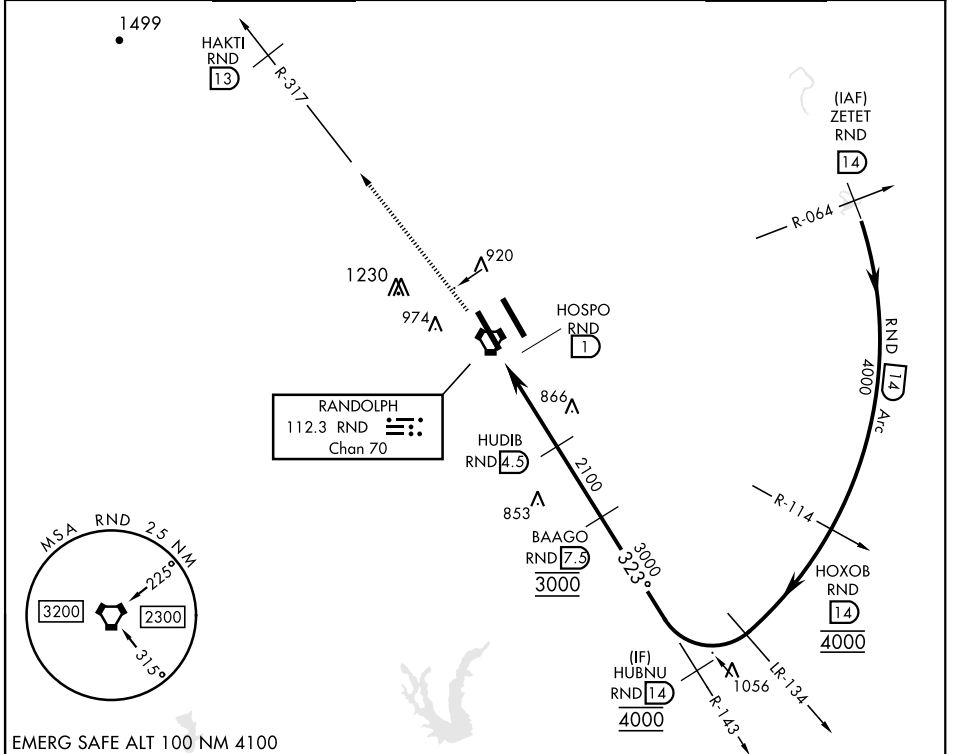
VORTAC RND 112.3 Chan 70	APCH CRS 323°	Rwy Idg TDZE Arprt Elev 8352 733 761	[USAF]	RANDOLPH AFB (KRND)
--	-------------------------	--	--------	---------------------

RADAR required

* Circling not authorized NE of Rwy 15R-33L.

MISSED APPROACH: Climb to 3000 out RND VORTAC R-317 to RND 13 DME (HAKTI). Expect ATC instructions.

ATIS ★ 290.525	SAN ANTONIO APP CON 128.05 318.1	TOWER ★ 128.25 294.7	GND CON 119.65 275.8	CLNC DEL (RWY 15L-33R) 338.35	HANGOVER ATIS ★ 327.8	HANGOVER TOWER ★ 120.5 291.1	HANGOVER GND CON 124.75 353.75
--------------------------	--	--------------------------------	--------------------------------	---	---------------------------------	--	--



EMERG SAFE ALT 100 NM 4100

ELEV 761	TDZE 733	3000 RND R-317	HAKTI RND 13
----------	----------	----------------	--------------

HIRL all rwys
ALS Rwy 15L nstd
len 2100'

CATEGORY	A	B	C	D	E
S-33L	1120/55	387 (400-1)	1120/60	387 (400-1½)	
C CIRCLING*	1240-1 479 (500-1)	1280-1 519 (600-1)	1500-2 739 (800-2)	2000-3 1239 (1300-3)	

TACAN RWY 33L

SC-3, 26 DEC 2024 to 23 JAN 2025

SC-3, 26 DEC 2024 to 23 JAN 2025