

# ELLSWORTH-THREE DEPARTURE (RCA3•RCA)

ELLSWORTH AFB (KRCA)

RAPID CITY, SOUTH DAKOTA

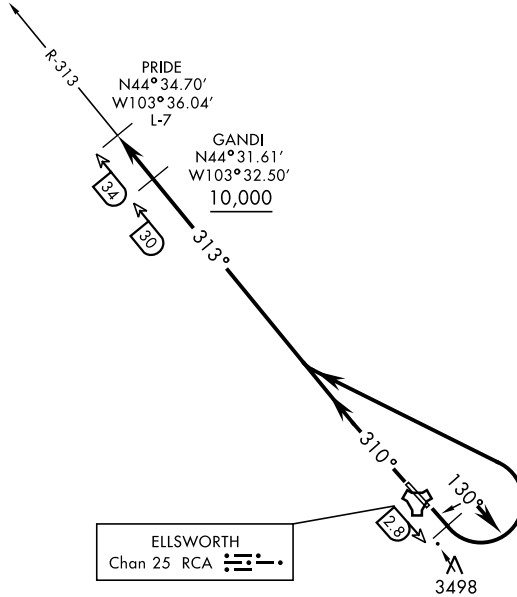
ATIS ★ 120.625 269.9  
 GND CON  
 121.8 275.8  
 ELLSWORTH TOWER ★  
 126.05 253.5  
 ELLSWORTH DEP CON  
 119.5 289.4  
 DENVER CENTER  
 127.95 338.2  
 ELLSWORTH APP CON  
 119.5 259.1

SHL-343 [USAF]

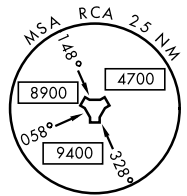
Rwy	Knots	60	120	180	240	300	360
13	V/V(fpm)	221	442	663	884	1105	1326
31	V/V(fpm)	236	472	708	944	1180	1416

ATC Climb Rate to 10,000

CAUTION:  
 Traffic transiting  
 IR-492 between  
 10,000 and 16,000.



ELLSWORTH  
 Chan 25 RCA



NC-1, 26 DEC 2024 to 23 JAN 2025

NC-1, 26 DEC 2024 to 23 JAN 2025



## DEPARTURE ROUTE DESCRIPTION

TAKE-OFF RWY 13: Track 130° until RCA TACAN 2.8 DME. Turn left to intercept RCA R-313 outbound to PRIDE. Cross GANDI at or above 10,000.

TAKE-OFF RWY 31: Track 310° to intercept RCA TACAN R-313 outbound to PRIDE. Cross GANDI at or above 10,000.

# ELLSWORTH-THREE DEPARTURE (RCA3•RCA)

Orig 15SEP16

RAPID CITY, SOUTH DAKOTA

ELLSWORTH AFB (KRCA)