

HI-ILS or LOC Z RWY 13

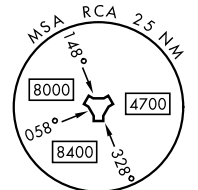
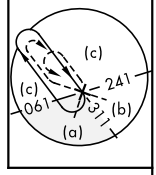
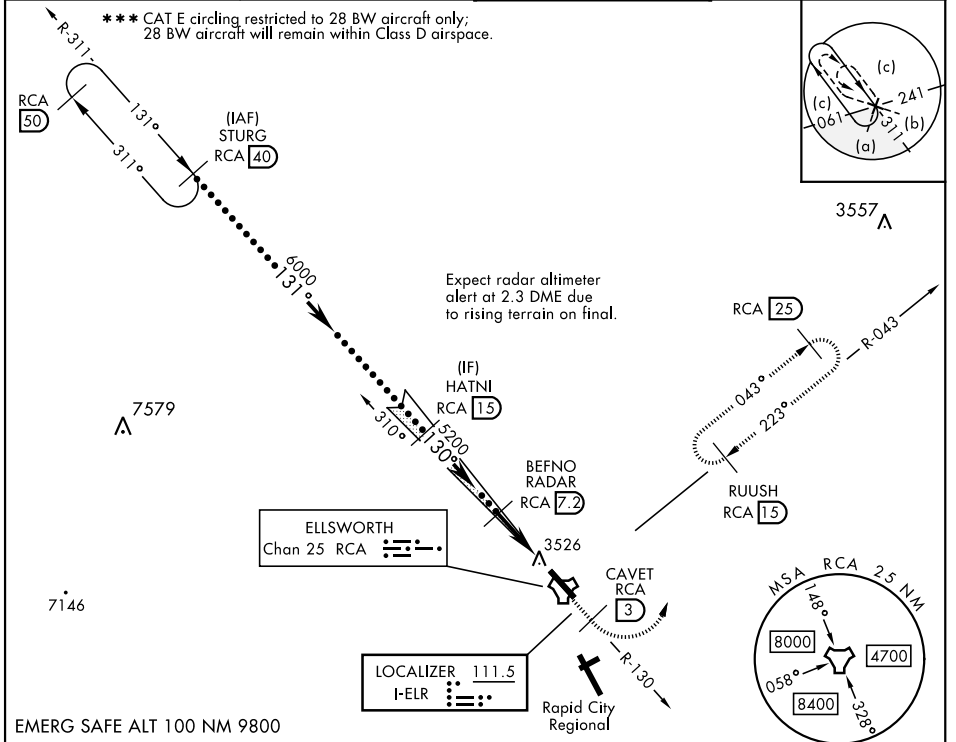
LOC I-ELR 111.5	APCH CRS 130°	Rwy ldg 13,497 TDZE 3276 Arpt Elev 3276
---------------------------	-------------------------	--

[USAF]

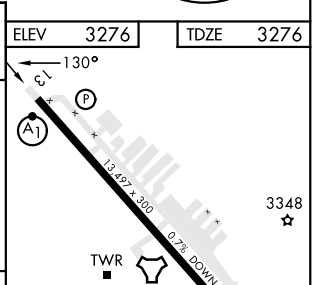
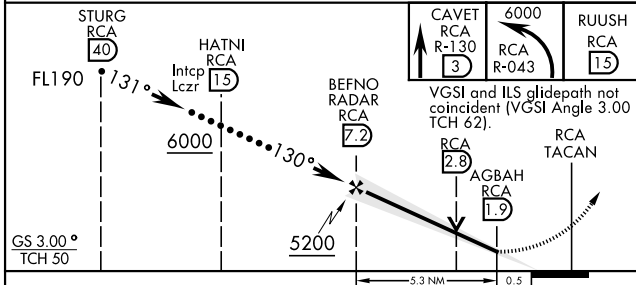
ELLSWORTH AFB (KRCA)

RADAR or DME required.	ALSIF-1 (A1)	MISSED APPROACH: Track outbound RCA R-130 to 3 DME (CAVET), then turn left to join RCA R-043 to 15 DME (RUUSH) and hold. Maintain 6000.
------------------------	------------------------	---

ATIS ★ 120.625 269.9	APP CON 119.5 259.1	TOWER ★ 126.05 253.5	GND CON 121.8 275.8
--------------------------------	-------------------------------	--------------------------------	-------------------------------



EMERG SAFE ALT 100 NM 9800



CATEGORY	C	D	E
S-ILS 13 ★	3476/24	200	(200-½)
S-LOC 13 ★★	3780/55	504	(600-1)
*** CIRCLING	3880-1¾ 604 (700-1¾)	3980-2¼ 704 (800-2¼)	4040-2¾ 764 (800-2¾)

HIRL Rwy 13-31					
FAF to MAP 5.3 NM					
Knots	120	140	160	180	200
Min:Sec	2:39	2:16	1:59	1:46	1:35

HI-ILS or LOC Z RWY 13

NC-1, 26 DEC 2024 to 23 JAN 2025

NC-1, 26 DEC 2024 to 23 JAN 2025