

TACAN Y RWY 31

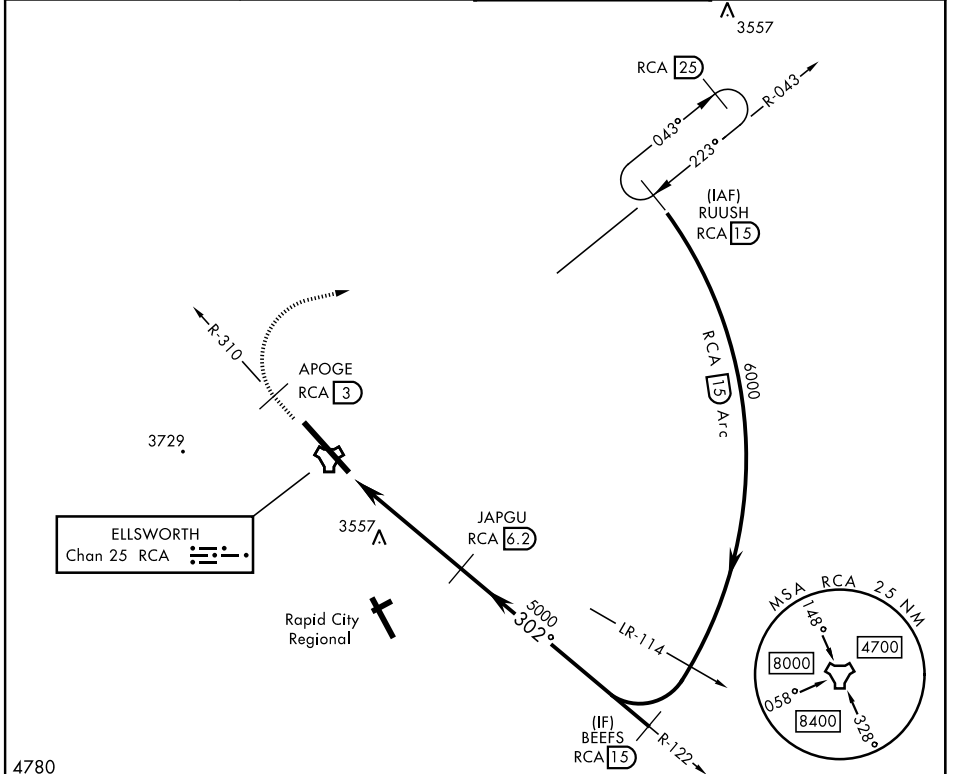
TACAN RCA Chan 25	APCH CRS 302°	Rwy Ildg 13,497 TDZE 3192 Arprt Elev 3276	[USAF]	ELLSWORTH AFB (KRCA)
----------------------	------------------	-------------------------------------------------	--------	----------------------

▼ * When ALS inop, increase CAT AB RVR to 55 and vis to 1 mile, increase CAT CDE vis to 1 1/4 mile.
 ** CAT E circling restricted to 28th BW aircraft only; 28th BW aircraft will remain within Class D airspace.

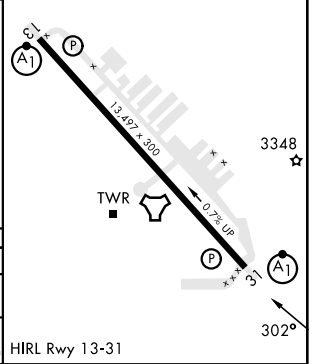
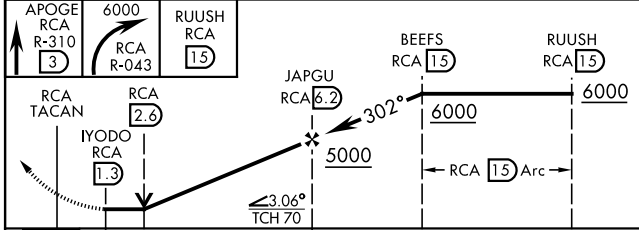
ALSF-1
A1


MISSED APPROACH: Track outbound RCA R-310 to 3 DME (APOGE), then turn right to join RCA R-043 to 15 DME (RUUSH) and hold. Maintain 6000.

ATIS ★ 120.625 269.9	APP CON 119.5 259.1	TOWER ★ 126.05 253.5	GND CON 121.8 275.8
-------------------------	------------------------	-------------------------	------------------------



EMERG SAFE ALT 100 NM 9800	ELEV 3276	TDZE 3192
----------------------------	-----------	-----------



CATEGORY	A	B	C	D	E
S-31*	3820/24 628 (600-1/2)		3820-1 3/8 628 (600-1 3/8)		
C CIRCLING**	3860-1 584 (600-1)	3880-1 604 (700-1)	3880-1 7/8 604 (700-1 7/8)	3980-2 1/4 704 (800-2 1/4)	4040-2 3/4 764 (800-2 3/4)

HIRL Rwy 13-31

TACAN Y RWY 31

NC-1, 26 DEC 2024 to 23 JAN 2025

NC-1, 26 DEC 2024 to 23 JAN 2025