

WAAS CH <b>42609</b> <b>W33A</b>	APP CRS <b>331°</b>	Rwy Idg TDZE Apt Elev	<b>5431</b> <b>352</b> <b>352</b>
--	------------------------	-----------------------------	---

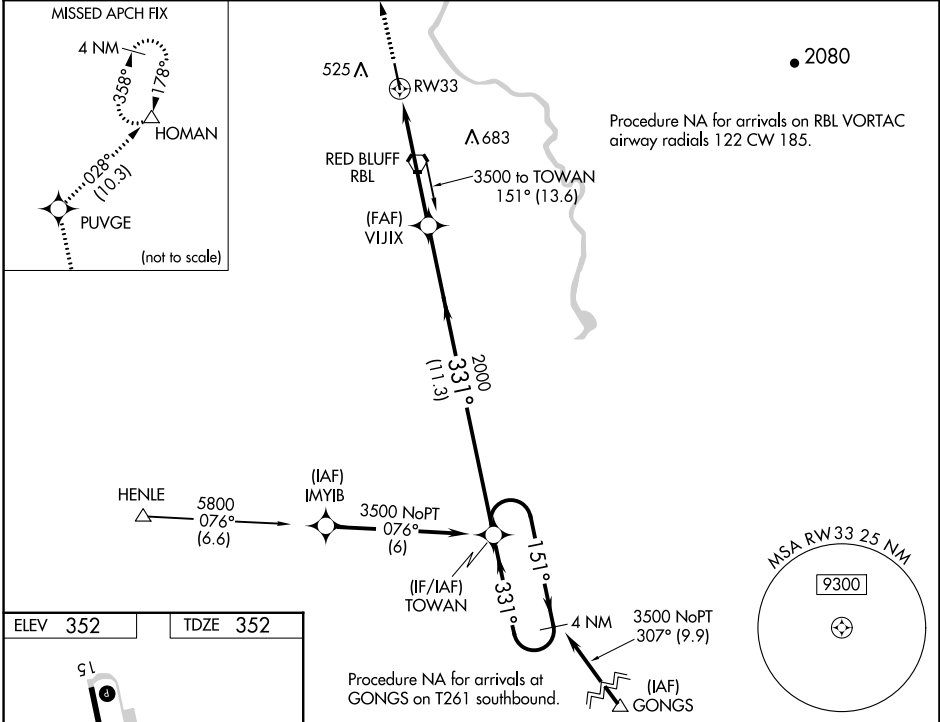
# RNAV (GPS) RWY 33

RED BLUFF MUNI (RBL)

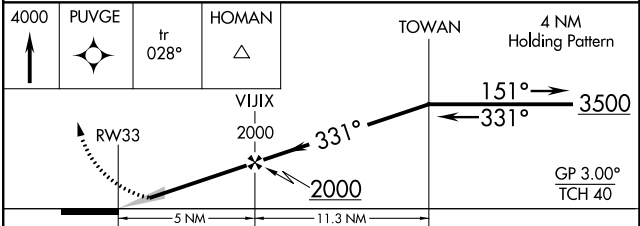
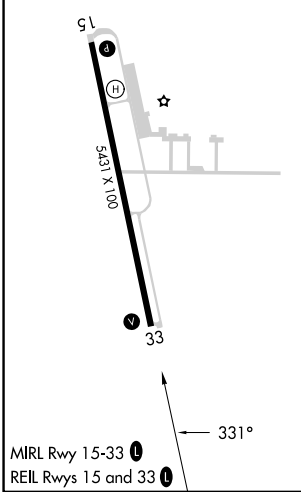
**⚠** Baro-VNAV NA when using Redding altimeter setting. For uncompensated Baro-VNAV systems, LNAV/VNAV NA below -15°C (5°F) or above 48°C (118°F). DME/DME RNP-0.3 NA. When local altimeter setting not received, use Redding altimeter setting and increase all DA/MDA 80 feet and increase LPV all Cats visibility ¼ SM, LNAV/VNAV all Cats visibility ¼ SM, LNAV Cat C visibility ¼ SM and Circling Cats C and D visibility ¼ SM.

**MISSED APPROACH:**  
Climb to 4000 direct PUVGE and track 028° to HOMAN and hold.

ASOS <b>120.775</b>	OAKLAND CENTER <b>132.2 350.3</b>	UNICOM <b>123.0 (CTAF)</b> <b>📻</b>
------------------------	--------------------------------------	--



ELEV <b>352</b>	TDZE <b>352</b>
-----------------	-----------------



CATEGORY	A	B	C	D
LPV DA	602-1 250 (300-1)			
LNAV/VNAV DA	718-1¼ 366 (400-1¼)			
LNAV MDA	780-1	428 (500-1)	780-1¼ 428 (500-1¼)	780-1½ 428 (500-1½)
<b>C</b> CIRCLING	860-1	508 (600-1)	900-1½ 548 (600-1½)	1060-2¼ 708 (800-2¼)

SW-2, 26 DEC 2024 to 23 JAN 2025

SW-2, 26 DEC 2024 to 23 JAN 2025