

VORTAC RBL 115.7 Chan 104	APP CRS 149°	Rwy Idg 5431 TDZE 352 Apt Elev 352
---	------------------------	---

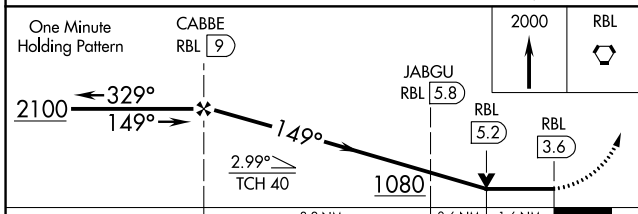
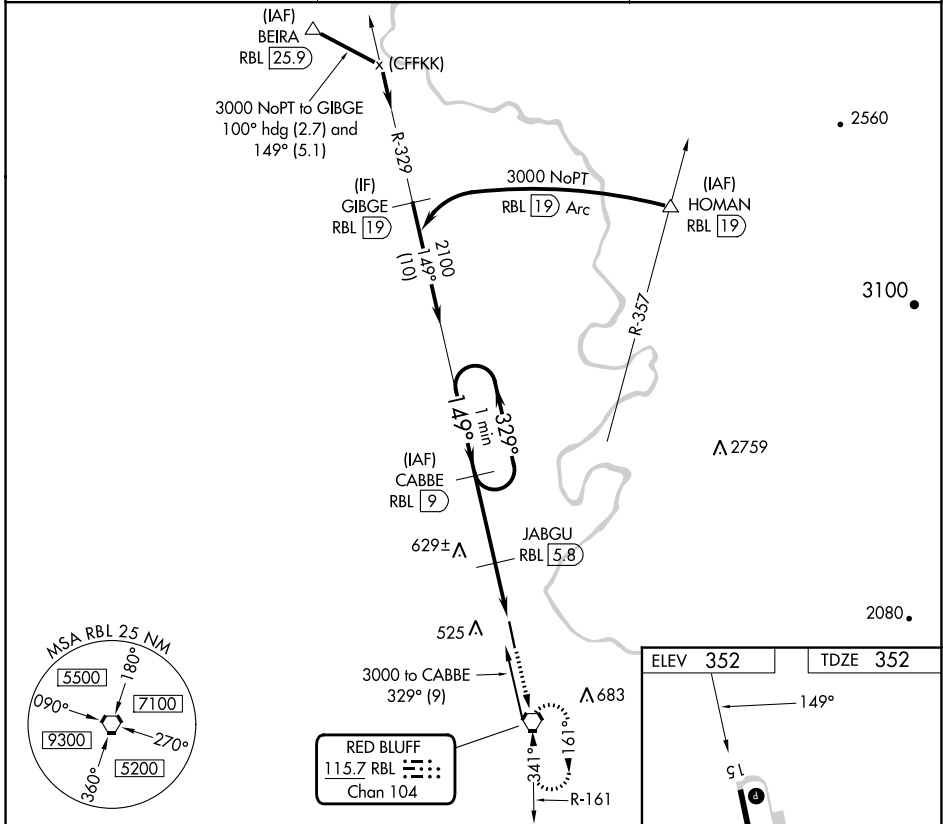
VOR/DME RWY 15

RED BLUFF MUNI (RBL)

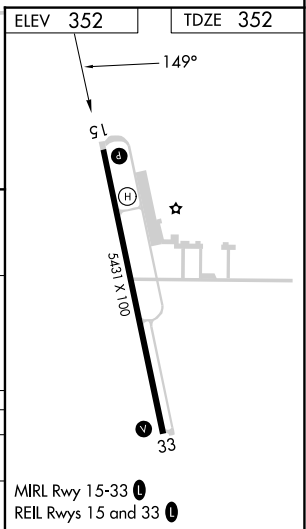
⚠ When local altimeter setting not received, use Redding altimeter setting and increase all MDAs and all Cat C/D visibility ¼ SM. VDP NA with Redding altimeter setting.

⚠ MISSED APPROACH: Climb to 2000 direct RBL VORTAC and hold.

ASOS 120.775	OAKLAND CENTER 132.2 350.3	UNICOM 123.0 (CTAF) 📻
------------------------	--------------------------------------	--



CATEGORY	A	B	C	D
S-15	880-1 528 (600-1)		880-1½ 528 (600-1½)	
📻 CIRCLING	880-1 528 (600-1)		900-1½ 548 (600-1½)	1060-2¼ 708 (800-2¼)



SW-2, 26 DEC 2024 to 23 JAN 2025

SW-2, 26 DEC 2024 to 23 JAN 2025