

LOC/DME I-RDM 109.1 Chan 28	APP CRS 226°	Rwy Idg TDZE Apt Elev 7031 3067 3082
---	------------------------	--

ILS or LOC RWY 23

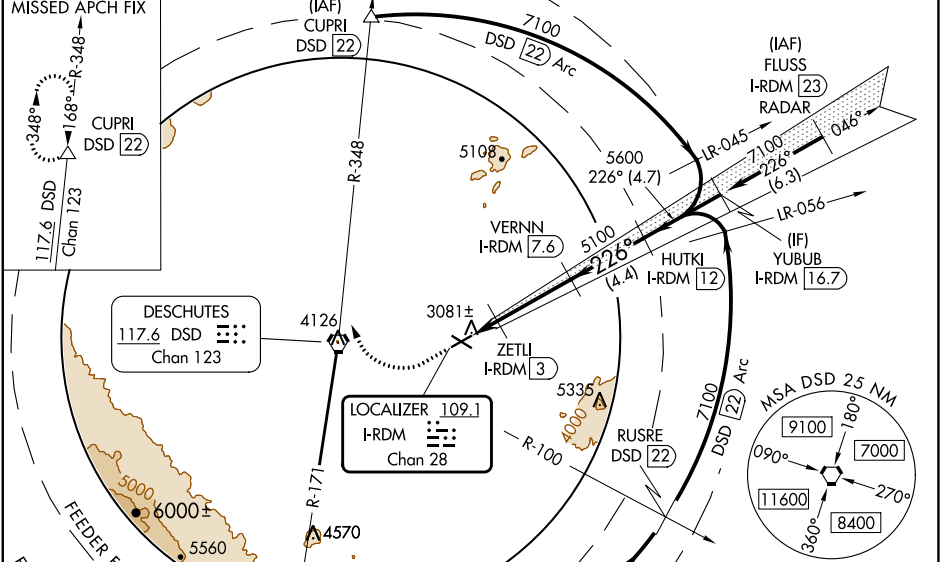
ROBERTS FLD (RDM)

DME required.

Autopilot coupled approach NA below 4370. When local altimeter setting not received, use Bend altimeter setting increase S-ILS 23 DA to 3348 feet; increase all MDAs 100 feet increase S-LOC 23 Cat C/D/E visibility 3/8 SM and Circling Cats C/D/E visibility 1/2 SM. For inop ALS, increase S-ILS 23 Cat E visibility to 3/4 SM and S-LOC 23 Cat C/D/E visibility to 1 SM. For inop ALS when using Bend altimeter setting increase S-ILS 23 all Cats visibility to 7/8 SM and increase S-LOC 23 Cats C/D/E visibility to 1 3/8 SM. VDP NA when using Bend altimeter setting.

MISSED APPROACH: Climb to 3700 then climbing right turn to 7000 on heading 320° and DSD VORTAC R-348 to CUPRI/DSD 22 DME and hold.

ATIS 119.025	SEATTLE CENTER 126.15 269.475	REDMOND TOWER* 124.5 (CTAF) 1256.8	GND CON 121.8	UNICOM 122.95
------------------------	---	--	-------------------------	-------------------------



NW-1, 26 DEC 2024 to 23 JAN 2025

NW-1, 26 DEC 2024 to 23 JAN 2025

ELEV 3082	TDZE 3067
-----------	-----------

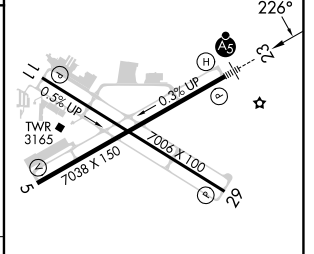
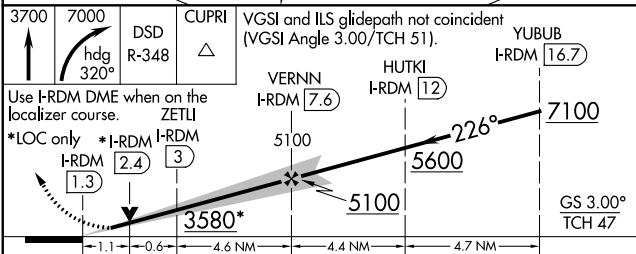
3700 7000 DSD CUPRI
↑ hdg 320° R-348 △

Use I-RDM DME when on the localizer course.

*LOC only *I-RDM I-RDM
1.3 2.4 3

3580* 5100 5600 7100

GS 3.00° TCH 47



CATEGORY	A	B	C	D	E
S-ILS 23	3267-1/2 200 (200-1/2)				
S-LOC 23	3440-1/2	373 (400-1/2)	3440-5/8 373 (400-5/8)		
CIRCLING	3540-1 458 (500-1)	3560-1 478 (500-1)	3640-1 1/2 558 (600-1 1/2)	3740-2 658 (700-2)	3820-2 1/2 738 (800-2 1/2)

REIL Rwy 5, 11, and 29

HIRL Rwy 5-23

MIRL Rwy 11-29