

APP CRS	Rwy Idg	7006
288°	TDZE	3080
	Apt Elev	3080

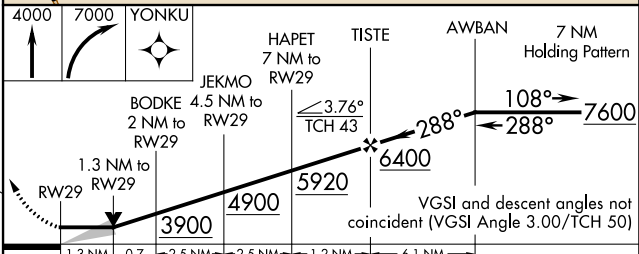
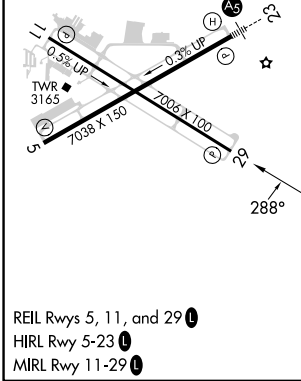
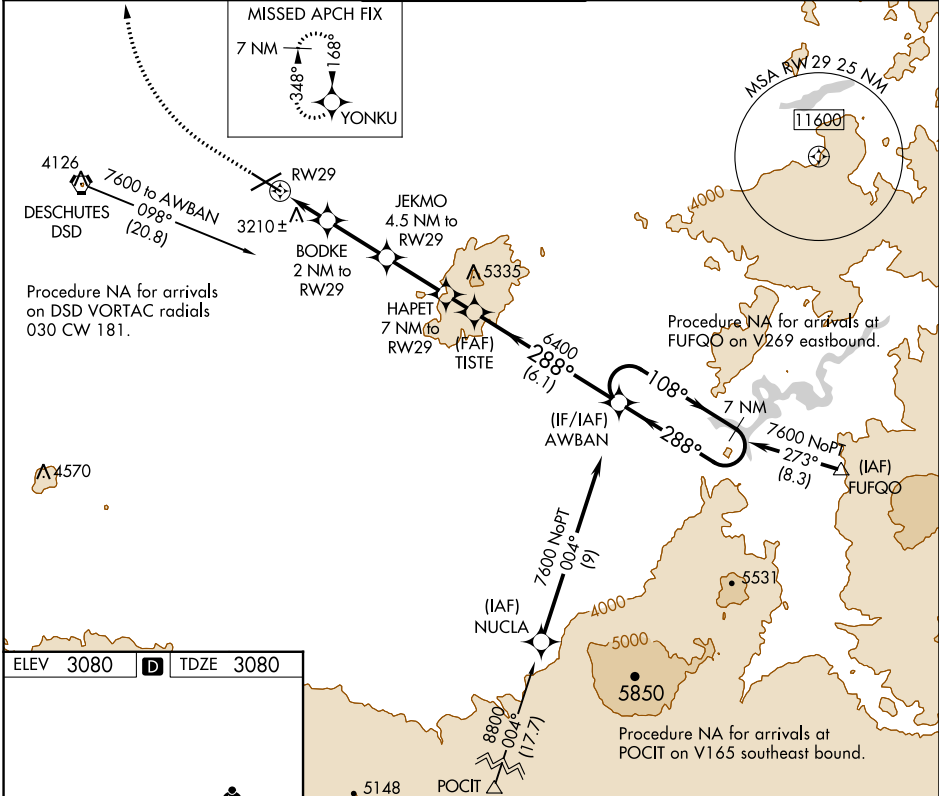
RNAV (GPS) Y RWY 29

ROBERTS FLD (RDM)

RNP APCH.
3 -17°C

MISSED APPROACH: Climb to 4000 then climbing right turn to 7000 direct YONKU and hold, continue climb-in-hold to 7000.

ATIS 119.025	SEATTLE CENTER 126.15 269.475	REDMOND TOWER★ 124.5 (CTAF) 256.8	GND CON 121.8	UNICOM 122.95
------------------------	---	---	-------------------------	-------------------------



CATEGORY	A	B	C	D
LNAV MDA	3560-1	480 (500-1)	3560-1 $\frac{3}{8}$ 480 (500-1 $\frac{3}{8}$)	NA
C CIRCLING	3560-1	480 (500-1)	3640-1 $\frac{1}{2}$ 560 (600-1 $\frac{1}{2}$)	NA

NW-1, 26 DEC 2024 to 23 JAN 2025

NW-1, 26 DEC 2024 to 23 JAN 2025