

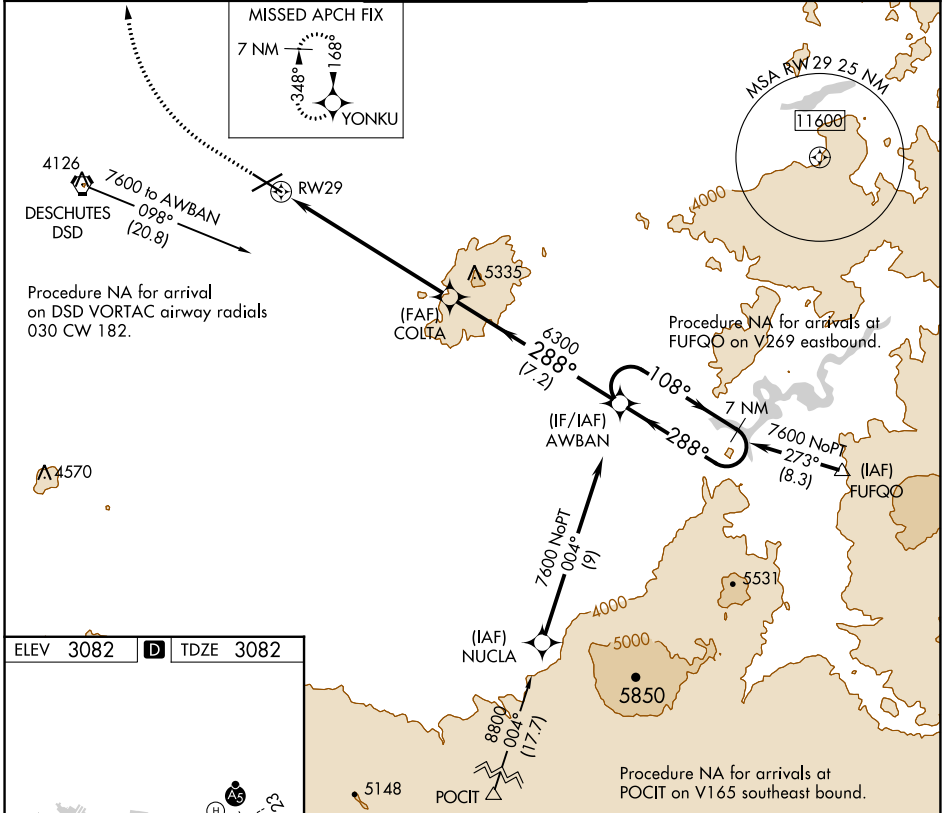
WAAS CH <b>90214</b> <b>W29A</b>	APP CRS <b>288°</b>	Rwy Idg TDZE Apt Elev	<b>7006</b> <b>3082</b> <b>3082</b>
--	------------------------	-----------------------------	---

# RNAV (GPS) Z RWY 29

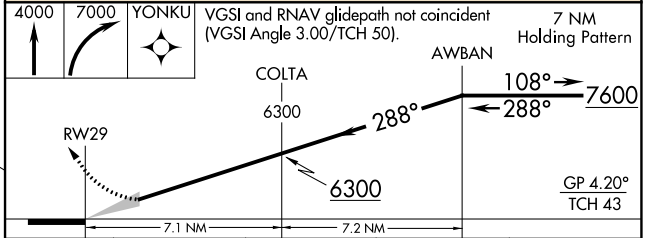
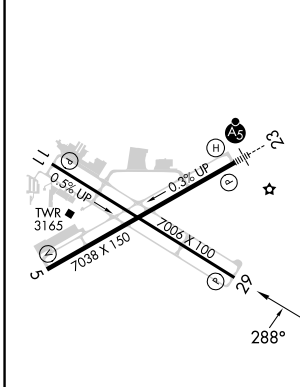
ROBERTS FLD (RDM)

RNP APCH-GPS. ▲ For uncompensated Baro-VNAV systems, LNAV/VNAV NA below -18°C or above 43°C. ❄ -17°C	MISSED APPROACH: Climb to 4000 then climbing right turn to 7000 direct YONKU and hold, continue climb-in-hold to 7000.
--	--

ATIS <b>119.025</b>	SEATTLE CENTER <b>126.15 269.475</b>	REDMOND TOWER★ <b>124.5 (CTAF) 0 256.8</b>	GND CON <b>121.8</b>	UNICOM <b>122.95</b>
------------------------	---	---	-------------------------	-------------------------



ELEV 3082	<b>D</b>	TDZE 3082
-----------	----------	-----------



CATEGORY	A	B	C	D
LPV DA	3368-1	286 (300-1)		NA
LNAV/VNAV DA	3368-1	286 (300-1)		NA

REIL Rwy 5, 11, and 29  
HIRL Rwy 5-23  
MIRL Rwy 11-29

NW-1, 26 DEC 2024 to 23 JAN 2025

NW-1, 26 DEC 2024 to 23 JAN 2025