

LOC/DME I-RNO 110.9 Chan 46	APP CRS 167°	Rwy Idg TDZE Apt Elev 10001 4415 4415
---	------------------------	---

ILS Y RWY 17R

RENO/TAHOE INTL (RNO)

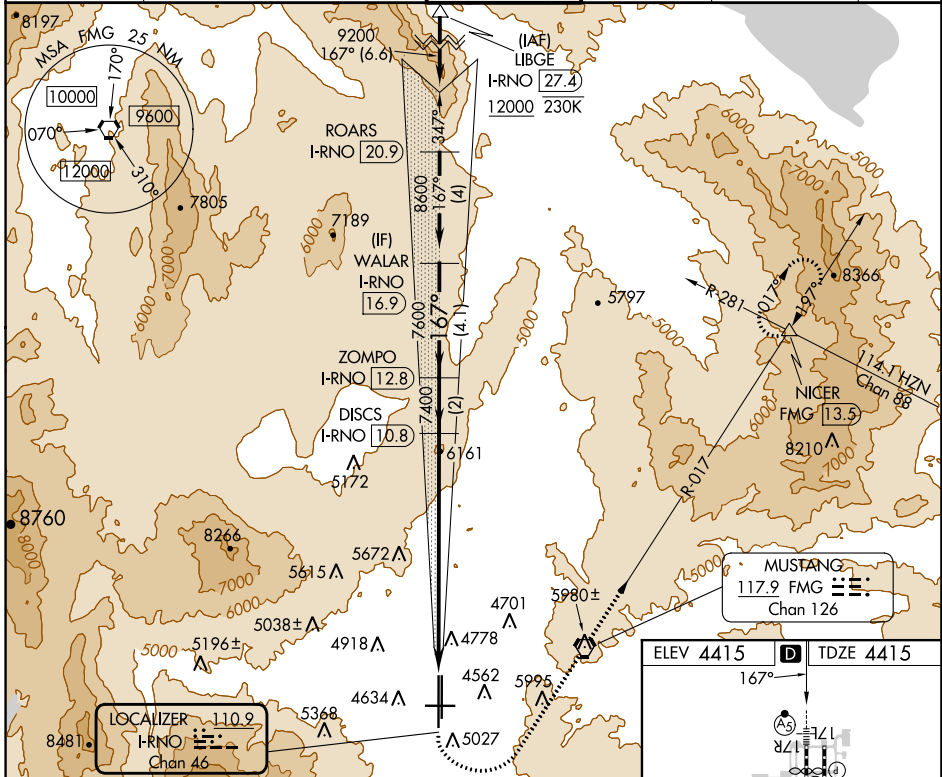
DME required.

Inop table does not apply.
↑ For inop ALS, increase S-ILS
-13°C 17R visibility to 1 3/8 SM.

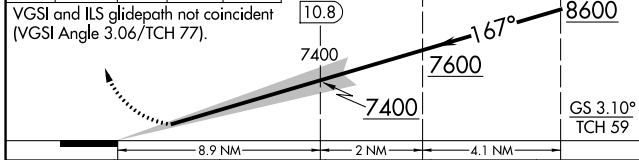
MALSRS

MISSED APPROACH: Climb to 6300 then climbing left turn to 11000 direct FMG VORTAC and on FMG VORTAC R-017 to NICER INT/FMG 13.5 DME and hold, continue climb-in-hold to 11000.
* Missed approach requires minimum climb of 350 feet per NM to 8000.
** Missed approach requires minimum climb of 275 feet per NM to 8000.

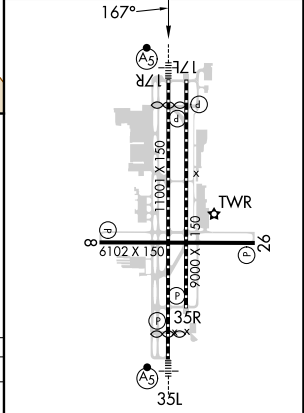
D-ATIS 135.8 363.0	NORCAL APP CON 119.2 279.55 126.3 353.9	RENO TOWER 118.7 257.8	GND CON 121.9 348.6	CLNC DEL 124.9 370.85	CPDLC
------------------------------	---	----------------------------------	-------------------------------	---------------------------------	-------



6300	11000	FMG	NICER
↑	↙	◻	△
		FMG R-017	



ELEV 4415	TDZE 4415
-----------	-----------



CATEGORY	A	B	C	D	E
S-ILS 17R*†	4915/50 500 (500-1)				
S-ILS 17R**#	5415-4 1000 (1000-4)				
S-ILS 17R#	5915-5 1500 (1500-5)				

MIRL Rwy 8-26
REIL Rws 8, 17L, 26 and 35R
HIRL Rws 17R-35L and 17L-35R