

(KLUBS.KLUBS1) 24025

# KLUBS ONE ARRIVAL (RNAV)

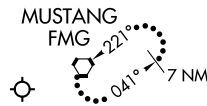
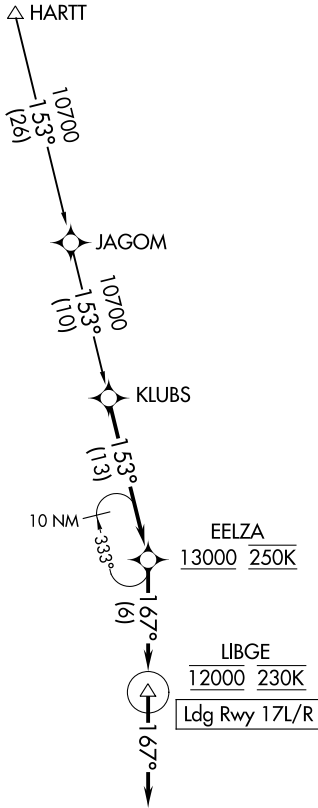
AL-346 (FAA)

RENO/TAHOE INTL (RNO)

RENO, NEVADA

RNAV 1 - GPS.  
RADAR required.

NORCAL APP CON  
126.3 353.9  
D-ATIS  
135.8 363.0  
RENO TOWER  
118.7 257.8



NOTE: GPS required.

CAUTION: Intense glider activity to FL180.

NOTE: Chart not to scale.

## ARRIVAL ROUTE DESCRIPTION

### HARTT TRANSITION (HARTT.KLUBS1)

From KLUBS on track 153° to cross EELZA at or above 13000 and at 250K, then on track 167° to cross LIBGE at 12000 and at 230K, then on heading 167°. Expect assigned instrument approach for Rwy 17L/R or RADAR vectors to final approach course.

### LOST COMMUNICATIONS

At LIBGE, proceed inbound via Rwy 17R ILS approach. If unable, direct FMG VORTAC and hold.

KLUBS ONE ARRIVAL (RNAV)

(KLUBS.KLUBS1) 25JAN24

RENO, NEVADA  
RENO/TAHOE INTL (RNO)

SW-4, 26 DEC 2024 to 23 JAN 2025

SW-4, 26 DEC 2024 to 23 JAN 2025