

RNAV (RNP) Y RWY 17R

RENO/TAHOE INTL (RNO)

APP CRS	Rwy Idg	10001
167°	TDZE	4415
	Apt Elev	4415

RNP AR APCH - GPS.

⚠ For uncompensated Baro-VNAV systems, procedure NA below -9°C or above 54°C. For inop ALS, increase RNP 0.1 DA all Cats visibility to RVR 5500, increase RNP 0.2 DA all Cats visibility to 1% SM, increase RNP 0.3 DA all Cats visibility to 1% SM.

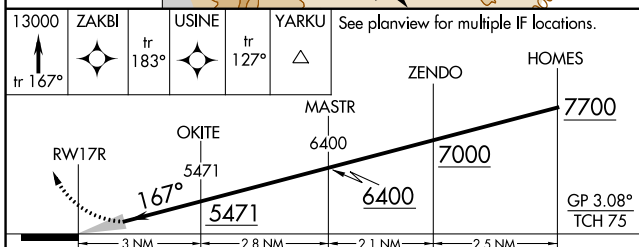
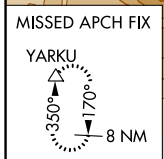
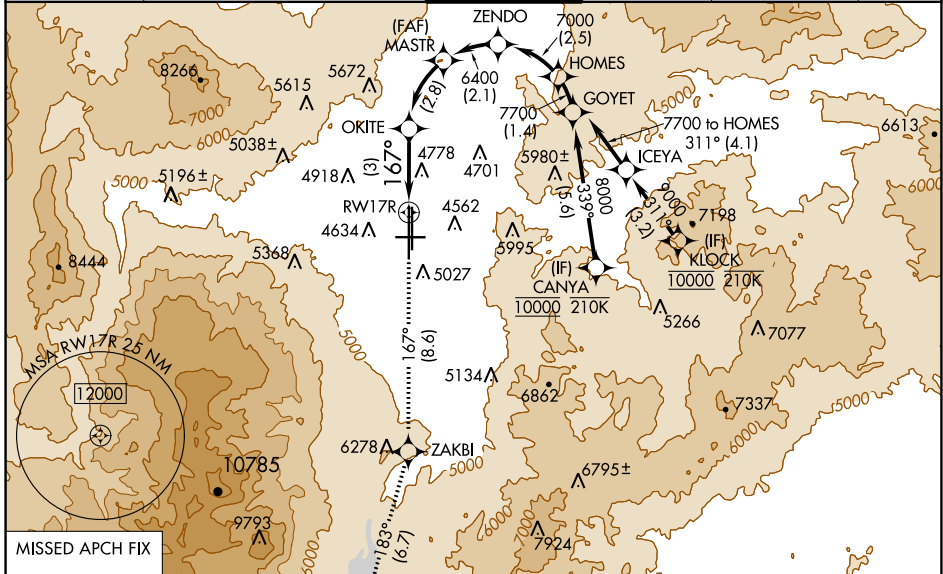
MALSR

MISSED APPROACH: Climb to 13000 on track 167° to ZAKBI and on track 183° to USINE and on track 127° to YARKU and hold, continue climb-in-hold to 13000.

#MISSED approach requires minimum climb of 222 feet per NM to 7220.

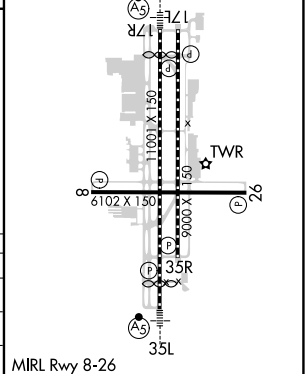
*MISSED approach requires minimum climb of 266 feet per NM to 7240.

D-ATIS	NORCAL APP CON	RENO TOWER	GND CON	CLNC DEL	CPDLC
135.8 363.0	119.2 279.55 126.3 353.9	118.7 257.8	121.9 348.6	124.9 370.85	



13000	ZAKBI	USINE	YARKU	See planview for multiple IF locations.
↑	✧	✧	△	
tr 167°	tr 183°	tr 127°		
	OKITE	ZENDO	HOMES	
	5471	6400	7700	
	3 NM	2.8 NM	2.1 NM	2.5 NM
CATEGORY	A	B	C	D
RNP 0.10 DA*		4759/30	344 (400-5%)	
RNP 0.20 DA#		4985-1¼	570 (600-1¼)	
RNP 0.30 DA		5091-1½	676 (700-1½)	

ELEV 4415	TDZE 4415
-----------	-----------



MIRL Rwy 8-26
 REIL Rwys 8, 17L, 26, and 35R
 HIRL Rwys 17R-35L and 17L-35R

AUTHORIZATION REQUIRED

SW-4, 26 DEC 2024 to 23 JAN 2025

SW-4, 26 DEC 2024 to 23 JAN 2025