

RNAV (RNP) Z RWY 17R

RENO/TAHOE INTL (RNO)

APP CRS 167°	Rwy Idg TDZE Apt Elev	10001 4415 4415
------------------------	-----------------------------	--

RNP AR APCH - GPS.

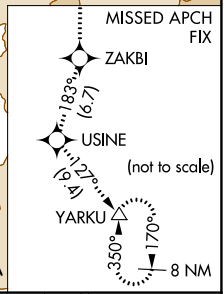
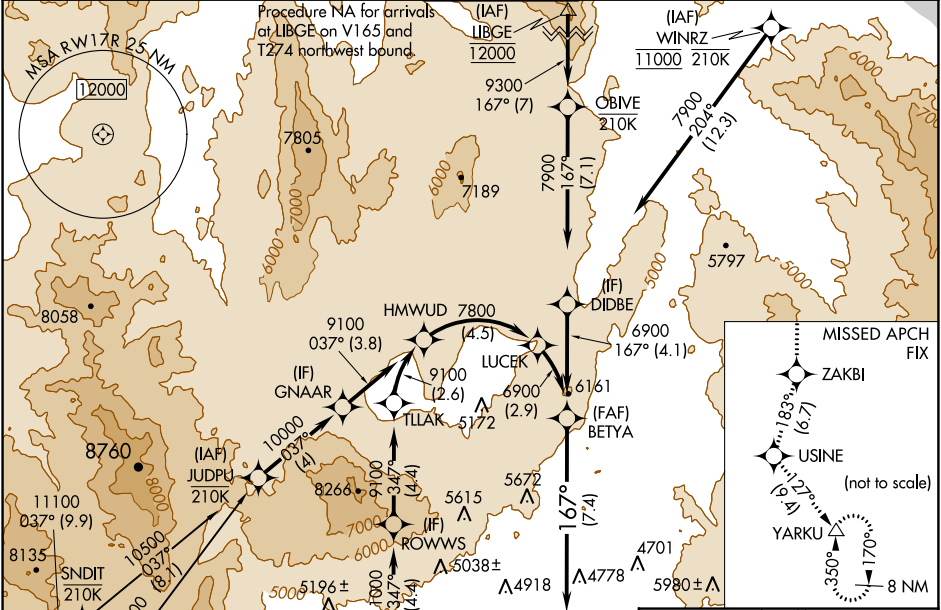
▽ For uncompensated Baro-VNAV systems, procedure NA below -9°C or above 54°C. For inop ALS, increase RNP 0.30 DA visibility all Cats to 1½ SM.

MALSR

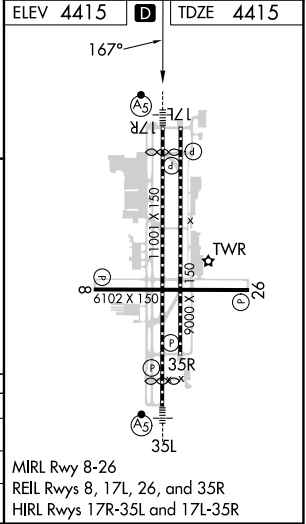
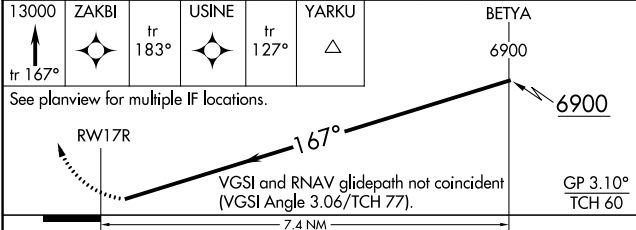
MISSED APPROACH: Climb to 3000 on track 167° to ZAKBI and on track 183° to USINE and on track 127° to YARKU and hold, continue climb-in-hold to 13000.

*Missed approach requires minimum climb of 266 feet per NM to 2740.

D-ATIS 135.8 363.0	NORCAL APP CON 119.2 279.55 126.3 353.9	RENO TOWER 118.7 257.8	GND CON 121.9 348.6	CLNC DEL 124.9 370.85	CPDLC
------------------------------	---	----------------------------------	-------------------------------	---------------------------------	-------



13000	ZAKBI	USINE	YARKU	BETA
↑	✧	✧	△	✧
tr 167°	tr 183°	tr 127°		6900



CATEGORY	A	B	C	D
RNP 0.10 DA*		4754/26	339 (400-½)	
RNP 0.30 DA		5092-1½	677 (700-1½)	

AUTHORIZATION REQUIRED

MIRL Rwy 8-26
REIL Rwy 8, 17L, 26, and 35R
HIRL Rwy 17R-35L and 17L-35R

SW-4, 26 DEC 2024 to 23 JAN 2025

SW-4, 26 DEC 2024 to 23 JAN 2025