

WAAS CH 72909 W17A	APP CRS 167°	Rwy Idg 9000 TDZE 4415 Apt Elev 4415
--	------------------------	--

RNAV (GPS) X RWY 17L

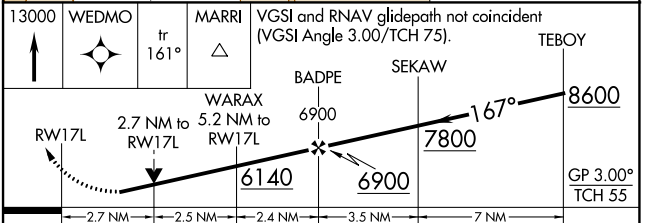
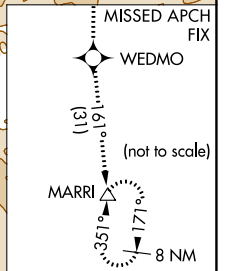
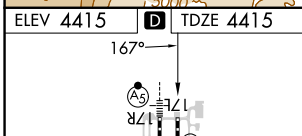
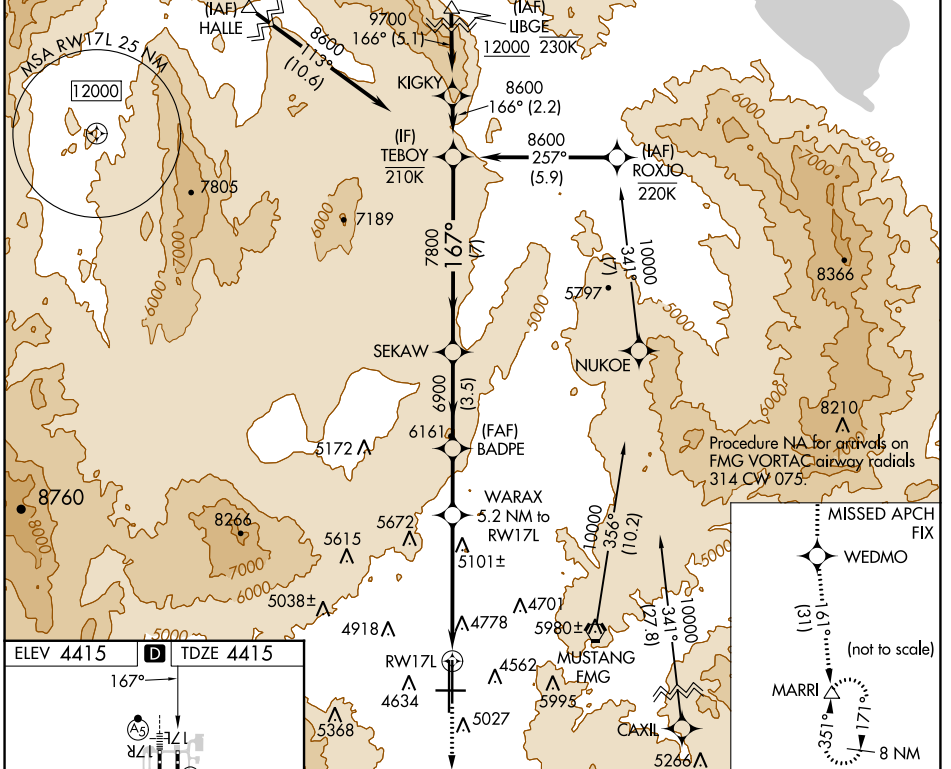
RENO/TAHOE INTL (RNO)

RNP APCH - GPS.

⚠ Circling Rwy 8 NA at night. Rwy 17L helicopter visibility reduction below ¼ SM NA. For uncompensated Baro-VNAV systems, LNAV/VNAV NA below -9°C or above 54°C.

MISSED APPROACH: Climb to 13000 direct WEDMO and on track 161° to MARRI and hold.

D-ATIS	NORCAL APP CON	RENO TOWER	GND CON	CLNC DEL	CPDLC
135.8 363.0	119.2 279.55 126.3 353.9	118.7 257.8	121.9 348.6	124.9 370.85	



CATEGORY	A	B	C	D
LPV DA	5109-2		694 (700-2)	
LNAV/VNAV DA	5094-1 7/8		679 (700-1 7/8)	
LNAV MDA	5360-1 1/4	945 (1000-1 1/4)	5360-2 1/2	945 (1000-2 1/2)
C CIRCLING	5360-1 1/4	945 (1000-1 1/4)	5360-1 1/2	945 (1000-1 1/2)
	6460-3		2045 (2100-3)	

MIRL Rwy 8-26
REIL Rws 8, 17L, 26, and 35R
HIRL Rws 17R-35L and 17L-35R

SW-4, 26 DEC 2024 to 23 JAN 2025

SW-4, 26 DEC 2024 to 23 JAN 2025