

LOC I-BNE 110.7	APP CRS 337°	Rwy Idg TDZE Apt Elev	9003 161 168
---------------------------	------------------------	-----------------------------	---

ILS or LOC RWY 34

RICHMOND INTL (RIC)

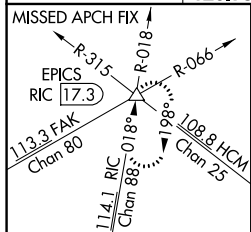
DME required for LOC only.

▼ For inop ALS, increase S-ILS 34 Cat E visibility to RVR 4000 and S-LOC 34 Cat E visibility to 1/2 SM. DME from RIC VORTAC. DME use requires simultaneous reception of I-BNE and RIC DME.

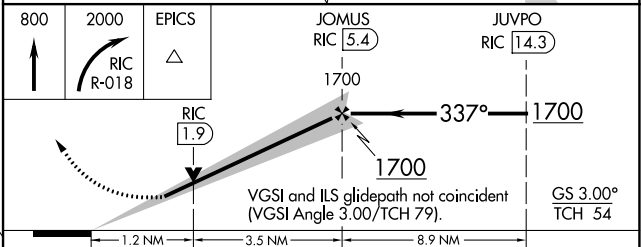
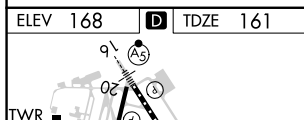
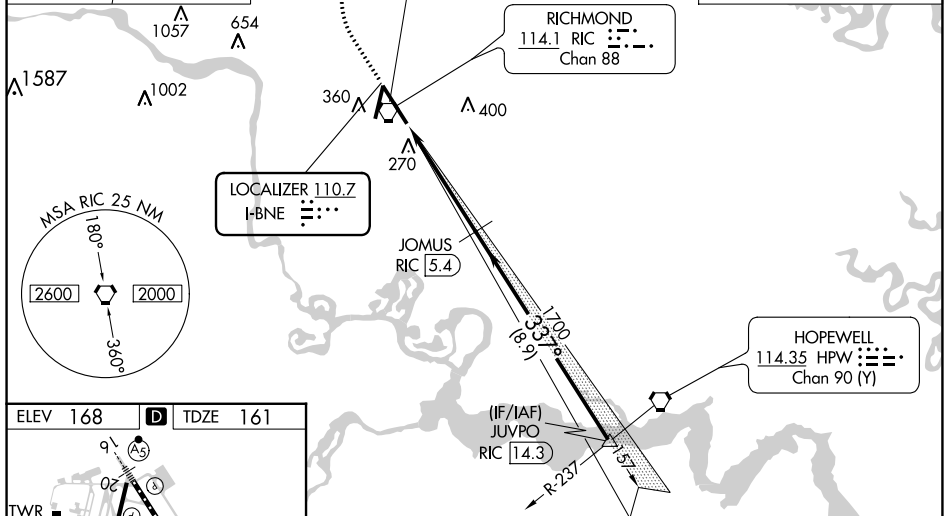
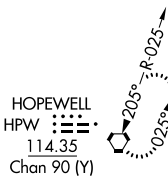


MISSED APPROACH: Climb to 800 then climbing right turn to 2000 on RIC VORTAC R-018 to EPICS INT/RIC 17.3 DME and hold.

ATIS 119.15 263.025	POTOMAC APP CON 126.4 282.375 (001°-185°) 126.75 307.2 (186°-360°)	RICHMOND TOWER 121.1 257.8	GND CON 121.9 348.6	CLNC DEL 127.55 348.6
-------------------------------	--	--------------------------------------	-------------------------------	---------------------------------



ALTERNATE MISSED APCH FIX



ELEV 168	D	TDZE 161			
TDZ/CL Rwy 34 HIRL Rws 2-20 and 16-34 REIL Rwy 20 FAF to MAP 4.7 NM					
Knots	60	90	120	150	180
Min:Sec	4:42	3:08	2:21	1:53	1:34

CATEGORY	A	B	C	D	E
S-ILS 34	361/18		200 (200-1/2)		
S-LOC 34	620/24	459 (500-1/2)		620/45	459 (500-7/8)
C CIRCLING	660-1	492 (500-1)		700-1 1/2 532 (600-1 1/2)	720-2 552 (600-2)
			740-2 572 (600-2)		

NE-3, 26 DEC 2024 to 23 JAN 2025

NE-3, 26 DEC 2024 to 23 JAN 2025