

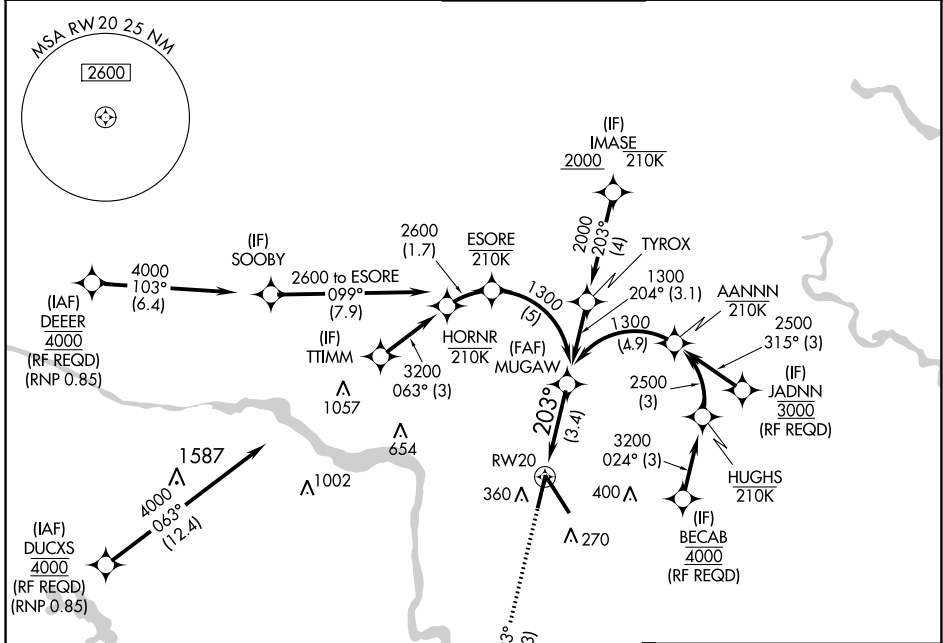
APP CRS	Rwy Idg	<b>6607</b>
<b>203°</b>	TDZE	<b>168</b>
	Apt Elev	<b>168</b>

# RNAV (RNP) Y RWY 20

RICHMOND INTL (RIC)

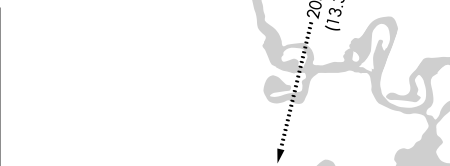
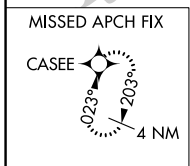
RNP AR APCH.	MISSED APPROACH: Climb to 2000 on track 203° CASEE and hold.
▼ For uncompensated Baro-VNAV systems, procedure NA below -11°C or above 54°C.	

ATIS	POTOMAC APP CON	RICHMOND TOWER	GND CON	CLNC DEL
<b>119.15 263.025</b>	<b>126.4 282.375</b> (001°-185°) <b>126.75 307.2</b> (186°-360°)	<b>121.1 257.8</b>	<b>121.9 348.6</b>	<b>127.55 348.6</b>

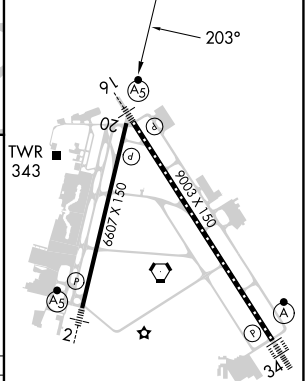


NE-3, 26 DEC 2024 to 23 JAN 2025

NE-3, 26 DEC 2024 to 23 JAN 2025



ELEV 168	<b>D</b> TDZE 168
----------	-------------------



2000	CASEE	See planview for multiple IF locations.
↑	✧	
tr 203°		



CATEGORY	A	B	C	D
RNP 0.11 DA		505-1	337 (400-1)	
RNP 0.30 DA		613-1½	445 (500-1½)	

## AUTHORIZATION REQUIRED

TDZ/CL Rwy 34  
HIRL Rwys 2-20 and 16-34  
REIL Rwy 20