

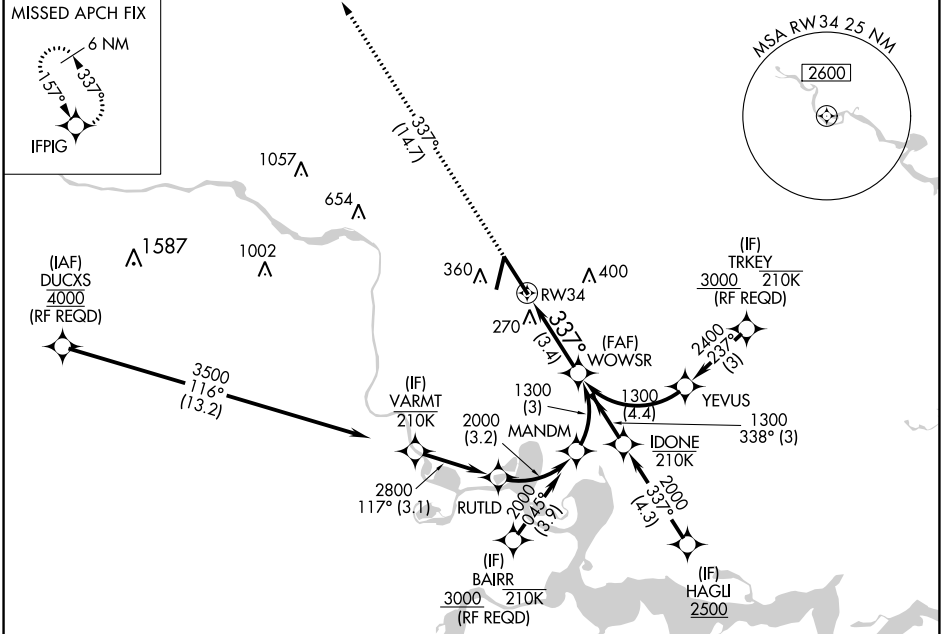
APP CRS	Rwy Idg	<b>9003</b>
<b>337°</b>	TDZE	<b>161</b>
	Apt Elev	<b>168</b>

# RNAV (RNP) Y RWY 34

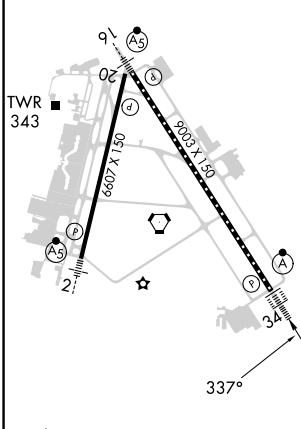
RICHMOND INTL (RIC)

RNP AR APCH.	ALSF-2	MISSED APPROACH: Climb to 2500 on track 337° to IFPIG and hold.
<p>▼ For uncompensated Baro-VNAV systems, procedure NA below -11°C or above 54°C. For inop ALS, increase RNP 0.30 all Cats visibility to 1/4 SM.</p>		

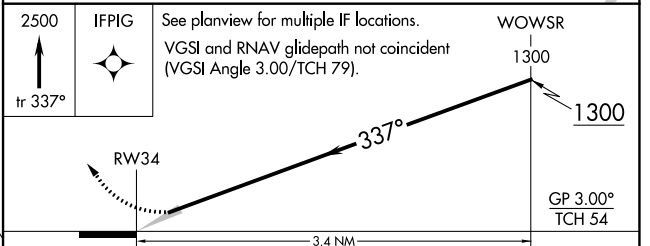
ATIS	POTOMAC APP CON	RICHMOND TOWER	GND CON	CLNC DEL
<b>119.15 263.025</b>	<b>126.4 282.375</b> <b>126.75 307.2</b> (186°-360°)	<b>121.1 257.8</b>	<b>121.9 348.6</b>	<b>127.55 348.6</b>



ELEV 168	<b>D</b>	TDZE 161
----------	----------	----------



TDZ/CL Rwy 34  
HIRL Rws 2-20 and 16-34  
REIL Rwy 20



CATEGORY	A	B	C	D
RNP 0.11 DA		482/26	321 (400-1/2)	
RNP 0.30 DA		596/49	435 (500-1)	

**AUTHORIZATION REQUIRED**

NE-3, 26 DEC 2024 to 23 JAN 2025

NE-3, 26 DEC 2024 to 23 JAN 2025