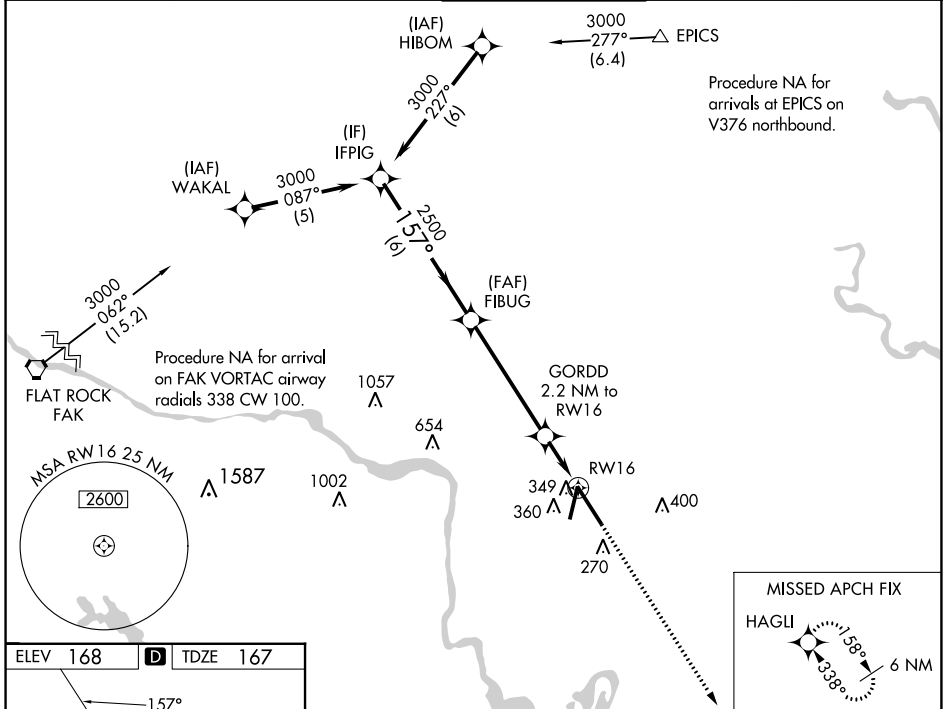


WAAS CH 72720 W16A	APP CRS 157°	Rwy Idg TDZE Apt Elev	9003 167 168
--	------------------------	-----------------------------	---

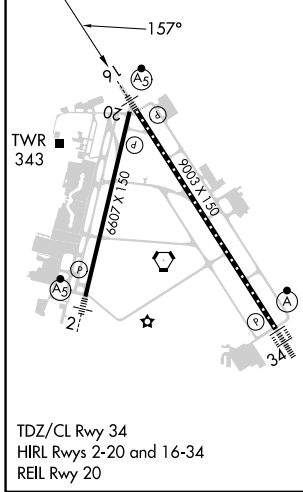
RNAV (GPS) Z RWY 16

RICHMOND INTL (RIC)

RNP APCH		MALSR		MISSED APPROACH: Climb to 2500 direct HAGLI and hold.	
<p>▼ For uncompensated Baro-VNAV systems, LNAV/VNAV NA below -11°C (13°F) or above 54°C (130°F). For inop ALS increase LNAV/VNAV all Cats visibility to RVR 5400. ** RVR 1800 authorized with use of FD or AP or HUD to DA.</p>					
ATIS 119.15 263.025	POTOMAC APP CON 126.4 282.375 (001°-185°) 126.75 307.2 (186°-360°)		RICHMOND TOWER 121.1 257.8		GND CON 121.9 348.6
			CLNC DEL 127.55 348.6		



ELEV 168	D TDZE 167
-----------------	--------------------------



VGSi and RNAV glidepath not coincident (VGSi Angle 3.00/TCH 71).							
IFPIG	FIBUG	GORDD 2.2 NM to RW16	HAGLI				
3000	2500	920*	2500				
GP 3.00° TCH 54	157°	*1.2 NM to RW16	*LNAV only.				
<table border="1"> <tr> <td>6 NM</td> <td>5 NM</td> <td>1 NM</td> <td>1.2 NM</td> </tr> </table>				6 NM	5 NM	1 NM	1.2 NM
6 NM	5 NM	1 NM	1.2 NM				
CATEGORY	A	B	C				
LPV DA **	367/24 200 (200-½)						
LNAV/VNAV DA	504/31 337 (400-¾)						
LNAV MDA	600/24 433 (500-½)	600/40 433 (500-¾)					
C CIRCLING	660-1 492 (500-1)	700-1½ 532 (600-1½)	720-2 552 (600-2)				

NE-3, 26 DEC 2024 to 23 JAN 2025

NE-3, 26 DEC 2024 to 23 JAN 2025