

VOR Y RWY 32

VOR HDF 112.05	APCH CRS 315°	Rwy ldg 13,302 TDZE 1497 Arpt Elev 1536
--------------------------	-------------------------	--

AL-348 [USAF]

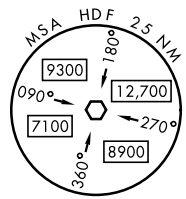
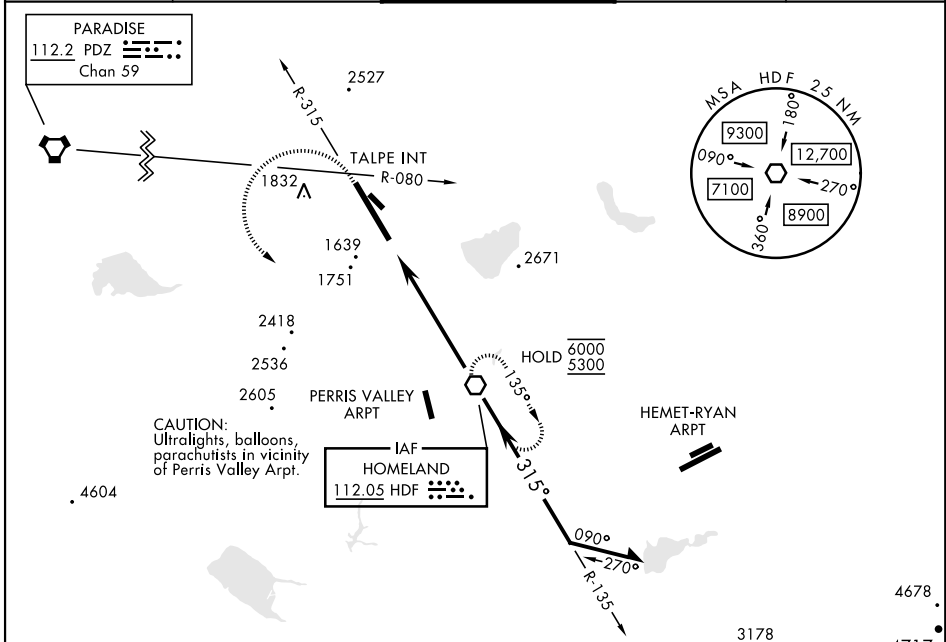
MARCH ARB (KRIV)

▼ *When ALS inop, increase CAT AB RVR to 60 and vis to 1½ mile, CAT CDE vis to 1½ miles.
 **Circling not authorized NE of Rwy 14-32. Rapid rising terrain.

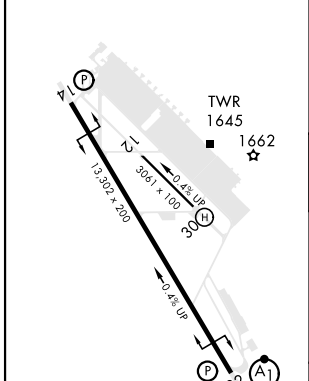


MISSED APPROACH: Climb to 5300 on HDF VOR R-315 to TALPE, then turn left direct HDF continue climb-in-hold to 5300.

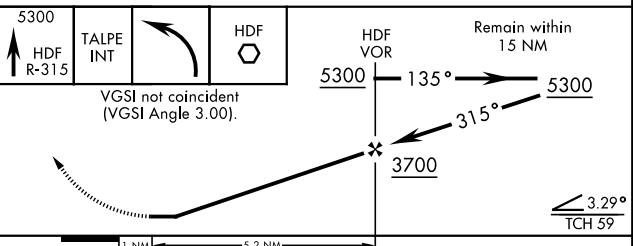
ATIS 134.75 239.05	APP/DEP CON ★ 133.5 306.975	TOWER 127.65 253.5	GND CON 121.75 335.8	CLNC DEL 127.775 268.7
------------------------------	---------------------------------------	------------------------------	--------------------------------	----------------------------------



ELEV 1536	TDZE 1497
-----------	-----------



EMERG SAFE ALT 100 NM 13,700



CATEGORY	A	B	C	D	E
S-32 *	2040/40 543 (600-¾)		2040/60	543	(600-1½)
CIRCLING **	2180-1½ 644 (700-1½)	2260-1½ 724 (800-1½)	2300-2¼ 764 (800-2¼)	2440-3 904 (1000-3)	2840-3 1304 (1400-3)

VOR Y RWY 32

SW-3, 26 DEC 2024 to 23 JAN 2025

SW-3, 26 DEC 2024 to 23 JAN 2025