

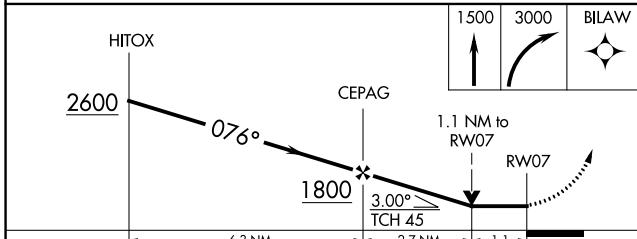
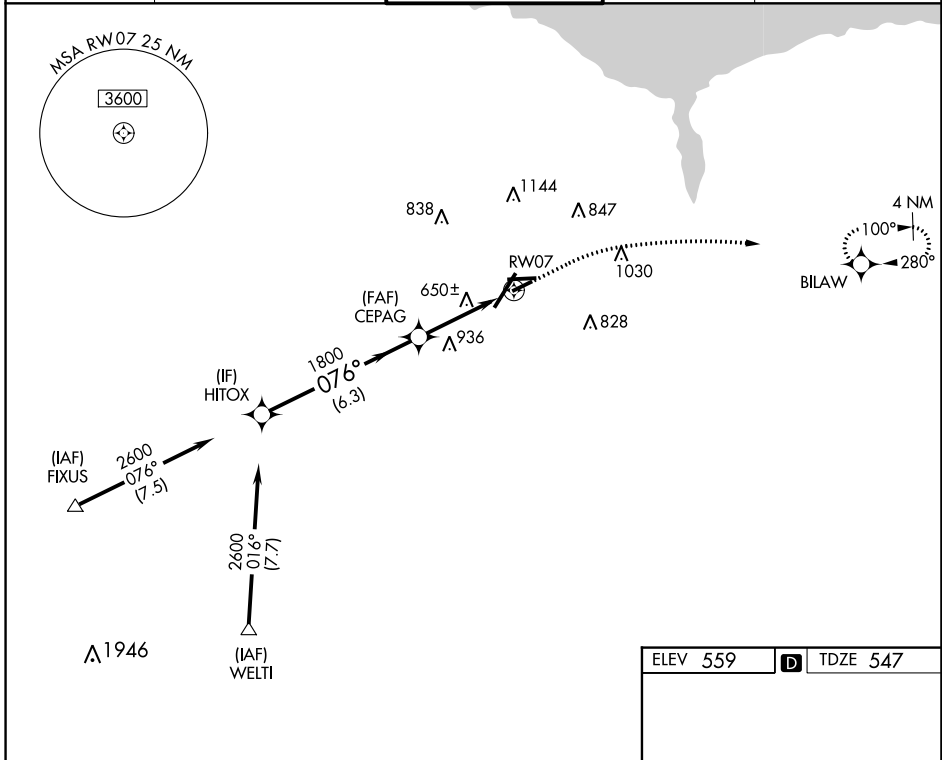
WAAS CH 61334 W07A	APP CRS 076°	Rwy Idg TDZE Apt Elev	4000 547 559
--	------------------------	-----------------------------	---

RNAV (GPS) RWY 7

FREDERICK DOUGLASS/GREATER ROCHESTER INTL (ROC)

RNP APCH - GPS.	MISSED APPROACH: Climb to 1500 then climbing right turn to 3000 direct BILAW and hold.
▼ ▲ Rwy 7 helicopter visibility reduction below ¾ SM NA.	

ATIS 124.825	ROCHESTER APP CON 119.55 269.6	ROCHESTER TOWER 118.3 254.3	GND CON 121.7	CLNC DEL 118.8 343.65
------------------------	--	---------------------------------------	-------------------------	---------------------------------



ELEV 559	D TDZE 547
----------	-------------------

TDZ/CL Rwy 4
REIL Rws 7, 10 and 25
MIRL Rwy 7-25
HIRL Rws 10-28 and 4-22

CATEGORY	A	B	C	D
LP MDA	940-1	393 (400-1)	940-1½	393 (400-1½)
LNAV MDA	1060-1	513 (600-1)	1060-1¾	513 (600-1¾)
C CIRCLING	1060-1	501 (600-1)	1500-2¾ 941 (1000-2¾)	1500-3 941 (1000-3)

RNAV (GPS) RWY 7

NE-2, 26 DEC 2024 to 23 JAN 2025

NE-2, 26 DEC 2024 to 23 JAN 2025