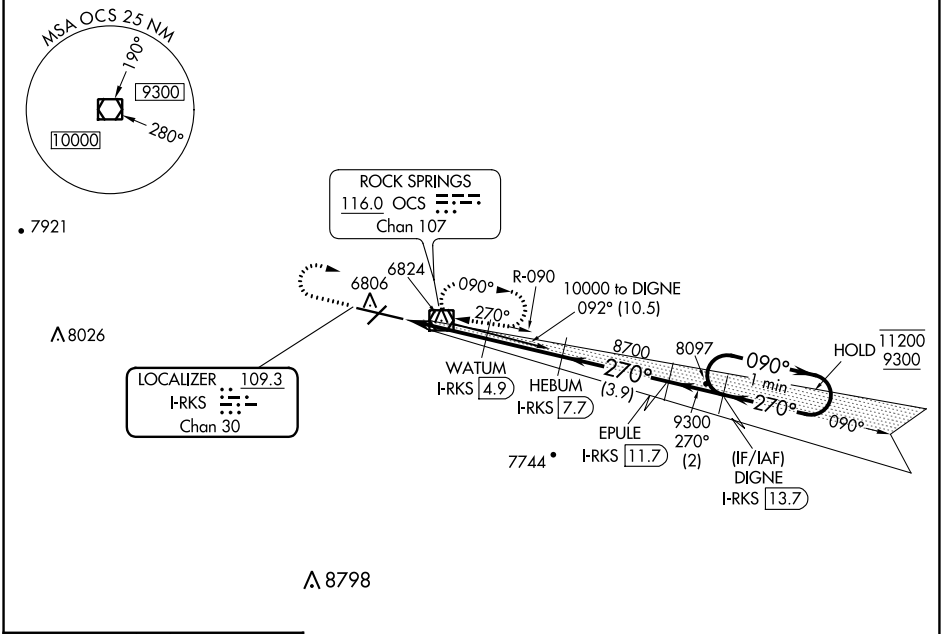


LOC/DME I-RKS 109.3 Chan 30	APP CRS 270°	Rwy Idg TDZE Apt Elev	10000 6765 6765
--	------------------------	-----------------------------	--

ILS or LOC RWY 27
SOUTHWEST WYOMING RGNL (R.KS)

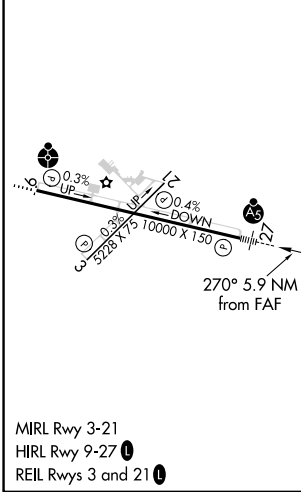
DME required.		MALSR	MISSED APPROACH: Climb to 7600 then climbing right turn to 9300 direct OCS VOR/DME and hold, continue climb-in-hold to 9300.
ASOS 118.375	SALT LAKE CENTER 124.35 353.5	UNICOM 122.8 (CTAF) 0	



NW-1, 26 DEC 2024 to 23 JAN 2025

NW-1, 26 DEC 2024 to 23 JAN 2025

ELEV 6765	D	TDZE 6765
-----------	----------	-----------



7600	9300	OCS	Use I-RKS DME when on the localizer course.	
*LOC only.		HEBUM I-RKS 7.7	EPULE I-RKS 11.7	DIGNE I-RKS 13.7
One Minute Holding Pattern				
WATUM I-RKS 4.9		8700		
I-RKS 1.8		270° 9300 ← 270° 9300		
7800*		090° → 11200		
0.9		GS 3.00° TCH 55		
2.2 NM		2.8 NM		
3.9 NM		2 NM		
CATEGORY	A	B	C	D
S-ILS-27	6965-1/2		200 (200-1/2)	
S-LOC 27	7100-1/2		335 (400-1/2)	
C CIRCLING	7140-1 375 (400-1)	7220-1 455 (500-1)	7220-1 1/2 455 (500-1 1/2)	7540-2 1/2 775 (800-2 1/2)