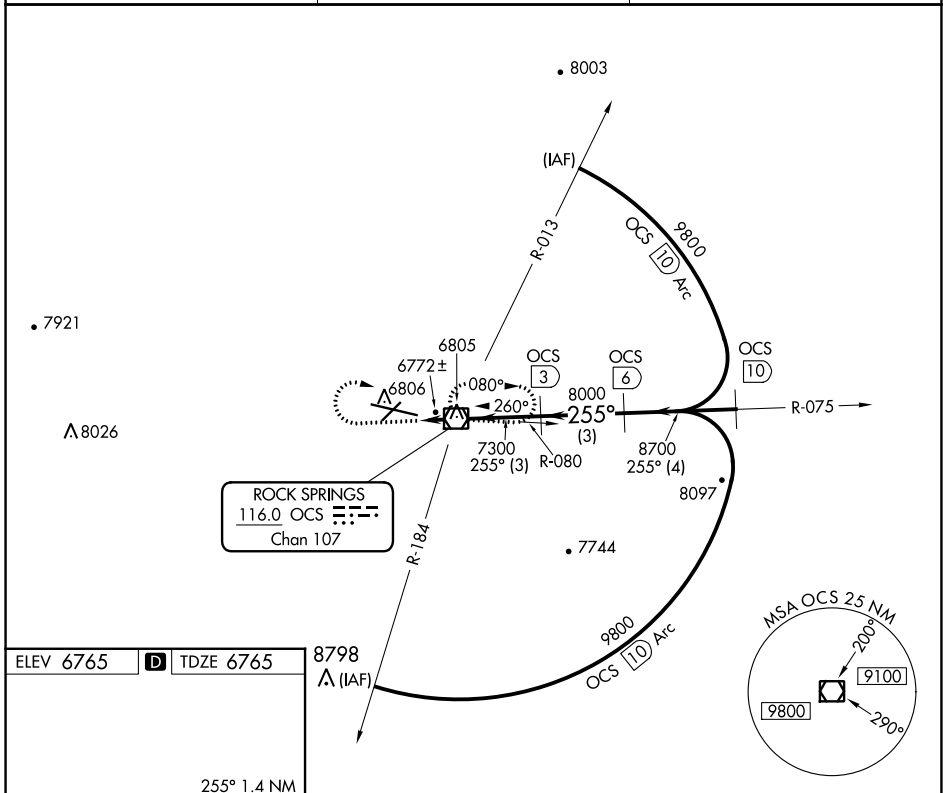


VOR/DME OCS 116.0 Chan 107	APP CRS 255°	Rwy Idg TDZE Apt Elev	10000 6765 6765
--	------------------------	-----------------------------	--

VOR/DME RWY 27

SOUTHWEST WYOMING RGNL (R.K.S)

<p>▼ Inoperative table does not apply to Cat D.</p>		<p>MALS R</p>	<p>MISSED APPROACH: Climb to 7700, then climbing right turn to 9100 direct OCS VOR/DME and hold.</p>
ASOS 118.375	SALT LAKE CENTER 124.35 353.5	UNICOM 122.8 (CTAF) ①	



ELEV 6765 **D** TDZE 6765

8798 **△** (IAF)

255° 1.4 NM from FAF

MIRL Rwy 3-21
HIRL Rwy 9-27 **①**
REIL Rwy 3 and 21 **①**

7700	9100	OCS	OCS 3	OCS 6	OCS 10
↑	↷	□	□	□	□
OCS VOR/DME		OCS 1.4			
7300		8000		8700	
1.4 NM		3 NM		4 NM	
CATEGORY	A	B	C	D	
S-27	7040-½ 275 (300-½)			7040-1 275 (300-1)	
C CIRCLING	7140-1 375 (400-1)	7220-1 455 (500-1)	7220-1½ 455 (500-1½)	NA	

Procedure Turn NA

NW-1, 26 DEC 2024 to 23 JAN 2025

NW-1, 26 DEC 2024 to 23 JAN 2025