

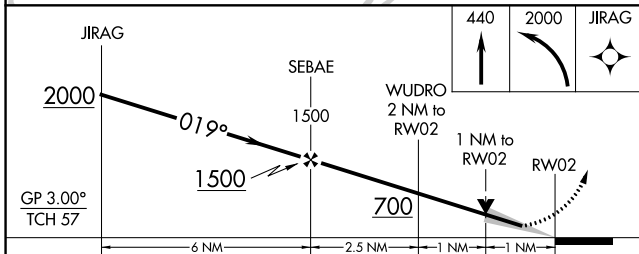
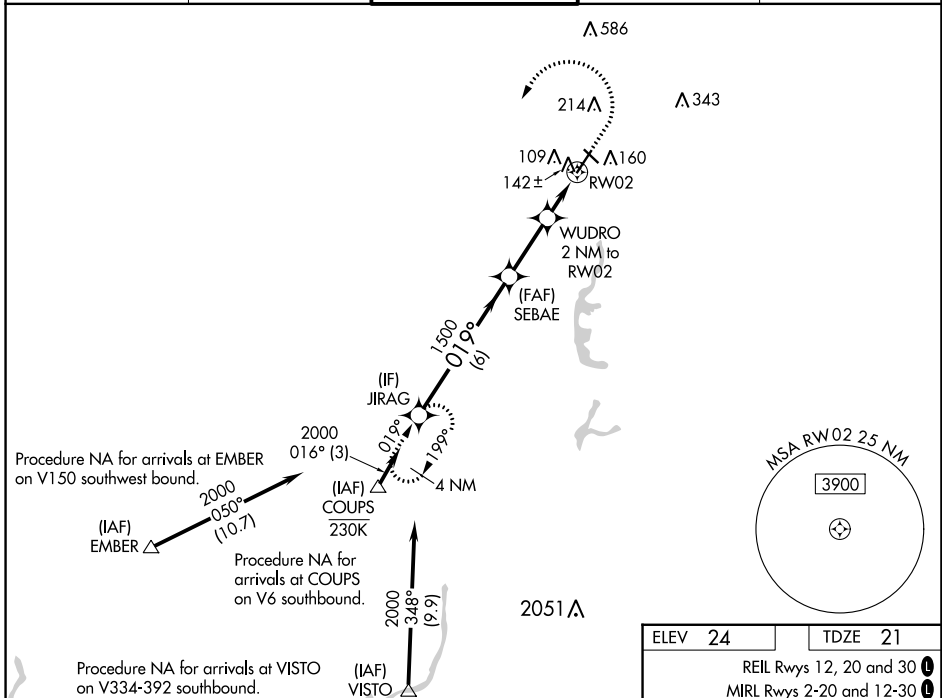
WAAS CH 62810 W02A	APP CRS 019°	Rwy Idg 5503 TDZE 21 Apt Elev 24
---------------------------------	------------------------	---

RNAV (GPS) RWY 2

SACRAMENTO EXEC (SAC)

RNP APCH-GPS.	MALSR	MISSED APPROACH: Climb to 440 then climbing left turn to 2000 direct JIRAG and hold.
<p>▼ For uncompensated Baro-VNAV systems, LNAV/VNAV NA below -1°C or above 54°C. For inop ALS, increase LNAV/VNAV all Cats visibility to 7/8 SM, increase LNAV all Cats visibility to 1 SM.</p>		

ATIS 125.5	NORCAL APP CON 125.25 257.9	EXEC TOWER* 119.5 (CTAF) 0 278.8	GND CON 125.0	UNICOM 122.95
----------------------	---------------------------------------	--	-------------------------	-------------------------



ELEV 24	TDZE 21
REIL Rwy 12, 20 and 30	
MIRL Rwy 2-20 and 12-30	

CATEGORY	A	B	C	D
LPV DA		221-1/2	200 (200-1/2)	
LNAV/VNAV DA		304-1/2	283 (300-1/2)	
LNAV MDA	400-1/2	379 (400-1/2)	400-5/8	379 (400-5/8)
CIRCLING	500-1 476 (500-1)	520-1 496 (500-1)	560-1 1/2 536 (600-1 1/2)	800-2 1/2 776 (800-2 1/2)

SW-2, 26 DEC 2024 to 23 JAN 2025

SW-2, 26 DEC 2024 to 23 JAN 2025