

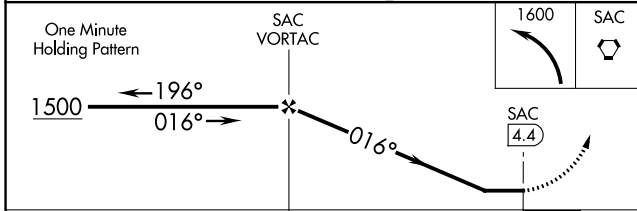
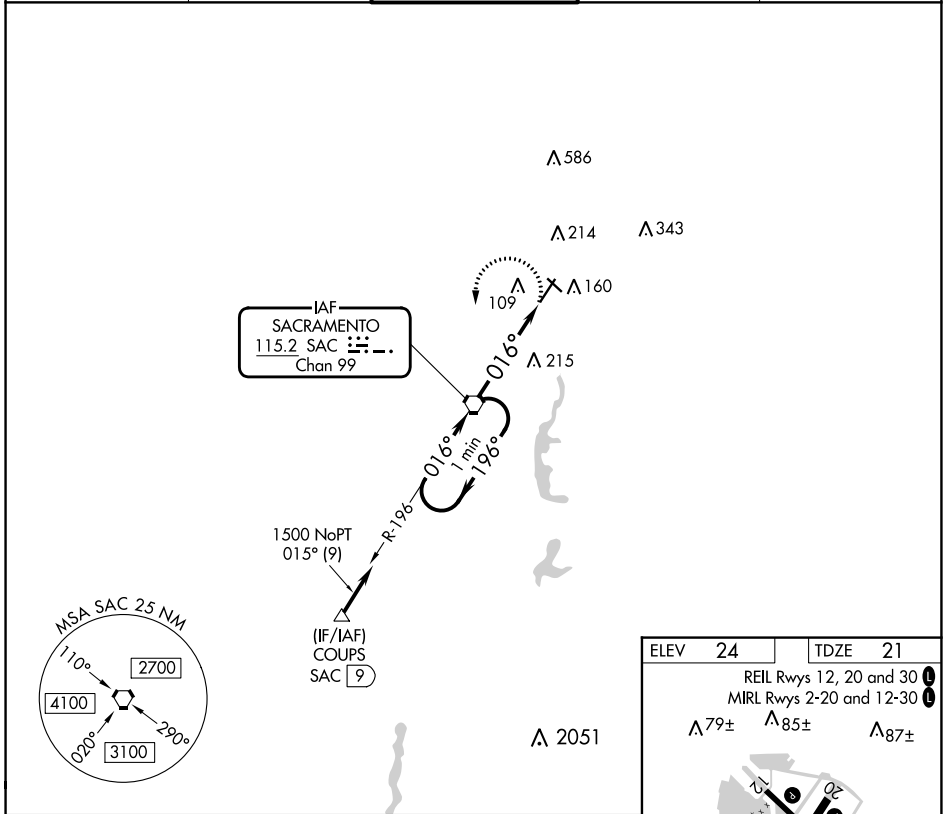
VORTAC SAC 115.2 Chan 99	APP CRS 016°	Rwy Idg 5503 TDZE 21 Apt Elev 24
--	------------------------	---

VOR RWY 2

SACRAMENTO EXEC (SAC)

<p>When local altimeter setting not received, use Sacramento Intl altimeter setting and increase all MDAs 40 feet and Circling Cat D visibility ¼ SM.</p>	<p>MALS R</p>	<p>MISSED APPROACH: Climbing left turn to 1600 direct SAC VORTAC and hold.</p>

ATIS 125.5	NORCAL APP CON 125.25 257.9	EXEC TOWER* 119.5 (CTAF) 0 278.8	GND CON 125.0	UNICOM 122.95
----------------------	---------------------------------------	--	-------------------------	-------------------------



ELEV 24	TDZE 21
REIL Rwys 12, 20 and 30	
MIRL Rwys 2-20 and 12-30	
A 79±	A 85±
A 87±	
A 183	A 100±
A 61±	A 61±
A 76±	A 61±
FAF to MAP 4.4 NM	
Knots	60 90 120 150 180
Min:Sec	4:24 2:56 2:12 1:46 1:28

CATEGORY	A	B	C	D
S-2	520-1/2	499 (500-1/2)	520-1	499 (500-1)
CIRCLING	520-1	496 (500-1)	560-1/2 536 (600-1/2)	800-2/2 776 (800-2/2)

SW-2, 26 DEC 2024 to 23 JAN 2025

SW-2, 26 DEC 2024 to 23 JAN 2025