

WAAS CH 70535 W17A	APP CRS 176°	Rwy Idg TDZE Apt Elev	8061 827 827
---------------------------------	------------------------	-----------------------------	---

RNAV (GPS) RWY 17

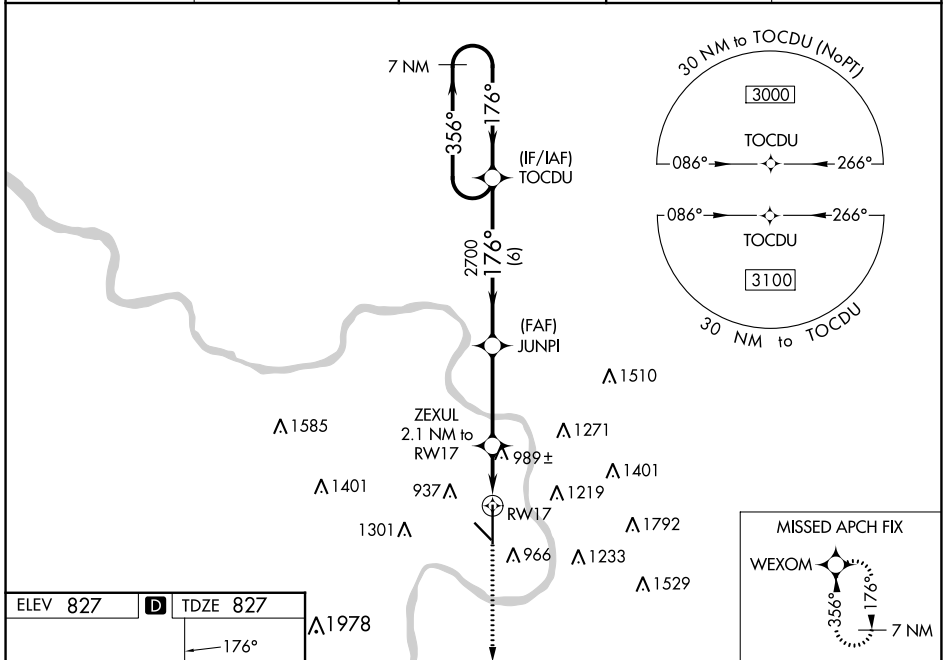
ROSECRANS MEML (STJ)

⚠ For uncompensated Baro-VNAV systems, LNAV/VNAV NA below -20°C (-4°F) or above 54°C (130°F). DME/DME RNP-0.3 NA. Helicopter visibility reduction below ¼ SM NA. Baro-VNAV and VDP NA when using Kansas City Intl altimeter setting. When local altimeter setting not received, use Kansas City Intl altimeter setting and increase all DA 97 feet, and LPV visibility ½ mile all Cats, LNAV/VNAV visibility ¾ mile all Cats; increase all MDA 100 feet and LNAV Cat C/D/E visibility ¼ mile, Circling Cat C ½ mile, Cat D ¼ mile.

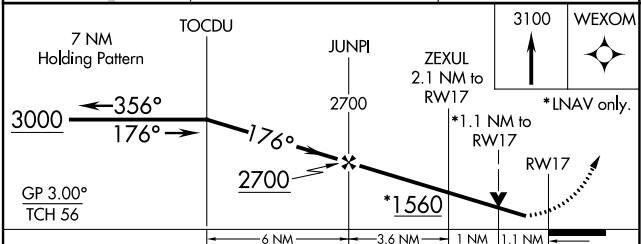
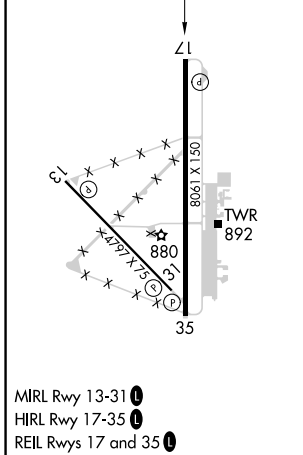
ASR/PAR

MISSED APPROACH:
Climb to 3100 direct WEXOM and hold.

ATIS 125.05	ST. JOSEPH APP CON * 120.35 360.8	ST. JOSEPH TOWER * 126.9 (CTAF) 239.0	GND CON 121.9	UNICOM 122.95
-----------------------	---	---	-------------------------	-------------------------



ELEV 827	D	TDZE 827
----------	----------	----------



CATEGORY	A	B	C	D	E
LPV DA		1027-¾	200 (200-¾)		
LNAV/VNAV DA		1077-¾	250 (300-¾)		
LNAV MDA	1240-1	413 (500-1)	1240-1½	413 (500-1½)	
C CIRCLING	1400-1 573 (600-1)	1420-1 593 (600-1)	1620-2¼ 793 (800-2¼)	1640-2¾ 813 (900-2¾)	1760-3 933 (1000-3)