

VORTAC STJ	APP CRS	Rwy Idg	8061
115.5	167°	TDZE	827
Chan 102		Apt Elev	827

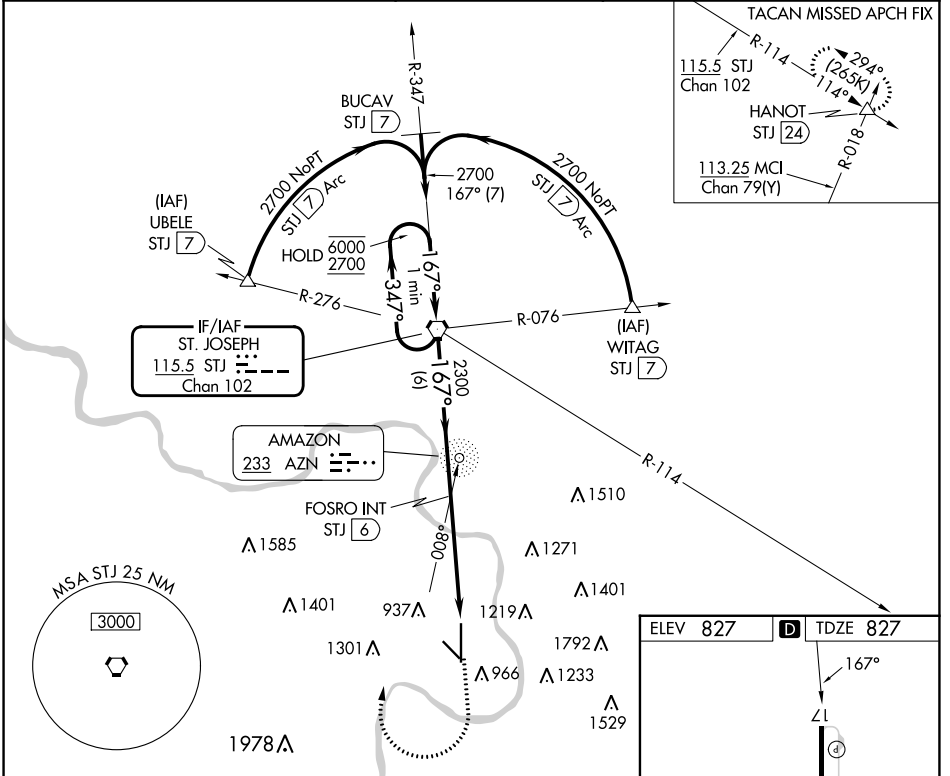
VOR or TACAN RWY 17

ROSECRANS MEML (STJ)

ADF or DME required.

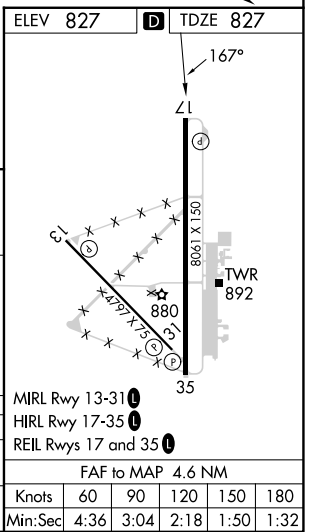
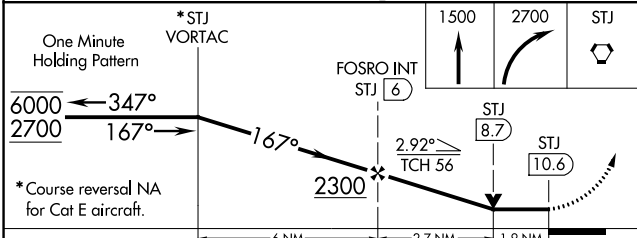
MISSED APPROACH: Climb to 1500 then climbing right turn to 2700 direct STJ VORTAC and hold. (TACAN aircraft climb to 2300 then climbing left turn to 3100 direct HANOT INT/STJ 24 DME and hold NW, LT, 114° inbound, GPS required).

ATIS 125.05	ST. JOSEPH APP CON * 120.35 360.8	ST. JOSEPH TOWER * 126.9 (CTAF) 239.0	GND CON 121.9	UNICOM 122.95
-----------------------	---	---	-------------------------	-------------------------



NC-3, 26 DEC 2024 to 23 JAN 2025

NC-3, 26 DEC 2024 to 23 JAN 2025



CATEGORY	A	B	C	D	E
S-17	1500-1	673 (700-1)	1500-1 $\frac{7}{8}$ 673 (700-1 $\frac{7}{8}$)		
CIRCLING	1500-1	673 (700-1)	1620-2 $\frac{1}{4}$ 793 (800-2 $\frac{1}{4}$)	1640-2 $\frac{3}{4}$ 813 (900-2 $\frac{3}{4}$)	1760-3 933 (1000-3)